



Dear Horse Member:

In this packet you will find information concerning your 2019 Saddle Horse Project.

There is county event information, and also other opportunities found throughout the state.

It would be beneficial for you and your family to take a few minutes to review the contents of this packet. There are many forms that have specific due dates. These dates can not be extended for any reason. You are responsible for turning in forms in a timely manner. Also, please pay close attention to the 4-H mandatory helmet rule.

If you have questions, please contact Carl Glenn @ 740-543-3136, Debbie Grimes @ 740-765-5044, Or Robin Wedlake @ 740-424-7606.

Please Note: State equine events information can be found at (<http://horse.osu.edu/>).

Best Wishes,

Angie Allison, Extension Educator

4-H Youth Development

Jefferson County

SADDLEHORSE PARTICIPANTS - INFORMATION YOU NEED TO KNOW

NOTE: THE OSU OFFICE IS CLOSED JUNE 1 THIS YEAR.

This means your forms must be in the office by the close of business May 31.

Saddlehorse Subcommittee – Meetings are open to all 4-H members, parents, volunteers, etc. Come and join us! Meetings are held at 6:30 p.m., the last Tuesday of each month at Bantam Ridge Elementary.

Contest Day – June 7 – A great way to develop a speaking style and show off your knowledge about horses. Members can also interview to be Most Outstanding Horse Exhibitor. Members interested must complete an Ohio 4-H Achievement Record Form. In addition, members can participate in Health And Safety Speaking, Health And Safety Skits, Demonstrated And Illustrated Talks, or Marketing Division competitions. You must sign up with your club advisor. Forms are due May 31st to the OSUE office.

Horse Camp – May 31-June 2 – Please see enclosed flyer

Uniform Rule Book – It is important that you buy and read Publication #179 Uniform Rules For 4-H Horse Shows. The book is available at the OSU Extension office.

Permission to Participate – This form is included. It is required for all 4-H Saddlehorse members. A new form must be completed each year. This form is due June 1. No exceptions.

Horse Safety – (Project Book 191 R) : This project is required for all youth taking a horse project for the first time. Members must purchase the book at OSU Extension, read the contents and sign the form at the end of the book. The signed form must be returned to the OSU Extension office by June 1. There are no exceptions to this rule.

Horse Quality Assurance – This is a requirement for all members taking saddlehorse for the first time. These two videos will be shown at horse camp.

Horse Identification Form – This form is included. Required for all 4-H members with saddlehorse projects. This must be turned into the OSU Extension office by June 1. The Sr. Fairboard will pick up forms at the end of the business day May 31, 2019. The office is closed on June 1 this year.

Lease forms – (For members who are leasing a project horse.) Forms are included in this packet. They are due to OSUE by June 1.

Other yearly opportunities:

Horse Bowl, Hippology, and Horse Judging Competitions. Contact Robin Wedlake for more information: 740-424-7606.

2019 CLOVERBUD HORSE CAMP REGISTRATION

Saturday,
June 1, 2019



2:00-4:00 p.m.

(NOTE: Please complete one form for each Cloverbud you are registering.)

REGISTRATIONS DUE: May 15, 2019

(NO LATE REGISTRATIONS WILL BE ACCEPTED!)

Name: _____ Club: _____

Address: _____

Telephone: _____ Age: (as of 1/1/19) _____

The fee for Cloverbud Camp is \$5.00 (includes craft and snack).

T-Shirts are available for purchase. If you want a t-shirt, complete the information below.
(NO SHIRTS WILL BE ORDERED WITHOUT PRE-PAYMENT WITH THIS REGISTRATION.)

I am enclosing \$ _____ for _____ Cloverbud Camp Registrations

I would like a t-shirt(s): _____ Yes _____ No _____ Size S M L XL XXL Youth Adult
(Small, Medium, Large & X-Large - \$15.00 XXL - \$19.00) Please circle size(s)

I am enclosing \$ _____ for _____ T-Shirts

TOTAL ENCLOSED FOR ALL ITEMS: \$ _____

Mail completed Registration, along with check made payable to:
Jefferson County Saddle Horse Committee, c/o OSU Extension
500 Market Street Suite 512
Steubenville, OH 43952
(740) 264-2212

**REGISTRATION—2019JEFFERSON COUNTY HORSE CAMP
MAY 31, JUNE 1 & 2 —JEFFERSON COUNTY FAIRGROUNDS**

NOTE: PLEASE COMPLETE ONE FORM FOR EACH MEMBER YOU ARE REGISTERING!

(Please complete reverse side of this form. It is important!)

NAME: _____ CLUB: _____

ADDRESS: _____

TELEPHONE: _____ AGE: (as of 1/1/19) _____ Will you bring a Horse/Pony? Yes No

MEMBER CAMP FEE: \$60.00 (Meals will not be included.) (REGISTRATION DUE: May 15, 2019)

**LATE REGISTRATIONS WILL HAVE A FEE OF \$75.00
After May 15th**

(If you need help with the cost of Horse Camp, camperships are available. Call OSUE Office for application @ (740) 264-2212 - Campership applications are due May 1, 2019)



CAMPER FEE: \$10.00 per night



T-Shirts are available for purchase. If you want a t-shirt, complete the information below.

(NO SHIRTS WILL BE ORDERED WITHOUT PRE-PAYMENT WITH THIS REGISTRATION.)

I am enclosing \$ _____ for _____ Horse Camp Registrations

I am enclosing \$ _____ for _____ Night's Camper Fee

I would like a t-shirt(s): Yes No Size S M L XL XXL Youth Adult

(Small, Medium, Large & X-Large - \$15.00 XXL - \$19.00)

Please circle size(s)

I am enclosing \$ _____ for _____ T-Shirts

TOTAL ENCLOSED FOR ALL ITEMS: \$ _____

NOTE: CLOVERBUD CAMP REGISTRATION IS REQUIRED ON A SEPARATE FORM!

COMMUTERS ARE WELCOME!!!

Mail completed Registration, along with check made payable
to: Jefferson County Saddle Horse Committee -
c/o OSU Extension, 500 Market Street Ste. 512
Steubenville, OH 43952



**REGISTRATION—20189JEFFERSON COUNTY HORSE CAMP
MAY 31, JUNE 1 & 2—JEFFERSON COUNTY FAIRGROUNDS**

NOTES: Everyone does Showmanship!

Years of Riding Experience: _____
Is this your First Year at Horse Camp? _____ Yes _____ No

**IF YOU WANT MORE THAN 1 PER ROW, NUMBER THEM ACCORDING TO PREFERENCE.
CHECK (1) CIRCLE IN A ROW AS INDICATED FROM THE SELECTIONS BELOW.**

Everyone pick from this row	Western Showmanship	English Showmanship	Contest Showmanship	Draft Showmanship
	<input type="radio"/>	<input type="radio"/>	<input type="radio"/>	<input type="radio"/>
BEGINNERS ONLY	Walk/Jog Western Horsemanship	Walk/Trot English Equitation		
	<input type="radio"/>	<input type="radio"/>		
INTERMEDIATE AND ADVANCED	Walk/Jog/Lope Western Horsemanship	Walk/Trot/Canter English Equitation	Contest Classes (Walk/Trot/Canter)	
	<input type="radio"/>	<input type="radio"/>	<input type="radio"/>	
RIDING CLASSES				
Driving _____	Trail _____	Trail-in-Hand _____	Ranch Pleasure Rail _____	Ranch Pleasure Pattern _____
English Dressage _____	Western Dressage _____	Jumping _____		

NOTE: Choose your riding class/classes above by placing a number in order of preference under your choices for that particular section, i.e. Driving 1, Trail 4, Jumping 2, English Dressage 3, etc. **DISCLAIMER:** You may not get ALL of your electives.

NAME: _____

CLUB: _____



**A new Riding Club in the Area,
Ohio Valley Dressage Association**



Is Proud to Announce the FIRST show in their 4 Part Schooling Show Series:

WHAT: Dressage Schooling Show and State Fair Qualifier

Never too early to be thinking about those State Fair scores!

WHERE: SHAW FARMS, 65010 Country Club Drive, Belmont Ohio 43718

Large Indoor Show Arena

Outdoor arena for warmup

Spacious Trailer Parking

WHEN: April 27th 2019

WHO: Chris Gemmel USDF -L Judge

For Information contact Show Secretary: Lori Mayher call or text: 740-512-4328

Upcoming shows:

When: June 15th, July 27th, and September 7th

Where: Jefferson County Fairgrounds, Smithfield, Ohio 43948

Stay tuned to our Facebook page and website for:

Membership Forms, Entry Forms, Deadlines, and Dates of Upcoming Shows!

PERMISSION TO PARTICIPATE IN 4-H HORSE ACTIVITIES DISCLOSURE AND RELEASE OF CLAIMS

I, _____, have chosen to participate in the Ohio 4-H Horse Program and its related horse activities. I understand that this participation will involve contact with horses and may give rise to a risk of physical injury.

I am aware that:

- A. Horses have a tendency to behave in ways which may result in injury, death, or loss to riders, or other persons in the immediate vicinity;
- B. Horses may react in an unpredictable way to sounds, sudden movement, unfamiliar objects, persons, or other animals;
- C. Riding a horse may give rise to a risk of injury from hazards arising from the surface or subsurface of the ground in which these riding activities occur;
- D. While in the vicinity of a horse or while riding a horse, I may be involved in a collision with another horse, another animal, a person, or an object;
- E. Other participants in the program may fail to maintain control over a horse or fail to act within their abilities, thus causing harm to me or other participants; and
- F. Other participants in the program may act in a negligent manner, which could result in harm to me.

As parent or guardian I have discussed with my child the need to behave in a safe manner. I will make sure that my child wears appropriate clothing and footwear during horse activities. I further agree that my child shall be subject to the helmet policy which is reprinted for convenience on the reverse side.

In consideration for the opportunity to participate in club, county, district and state 4-H horse activities and the use of services and facilities made available through these 4-H horse activities, I do release and forever discharge for myself and my heirs, executors, administrators, and assigns, the Ohio 4-H Horse Program professional and volunteer leaders, agents, The Ohio State University and its Board of Trustees, its administrators, faculty and staff, from all claims, demands, and causes of action for personal injury or any other damage which may arise out of or be in any way related to my participation in this activity or program.

I understand that my child is not required to participate in any horse activity, but grant permission for him/her to do so, despite the possible risks. I recognize that by participating in these activities, as with any physical activity, my child may risk personal injury. I hereby attest and verify that I have been advised of the potential risks, that I have full knowledge of the risks involved in these activities, and that I assume any expense that may be incurred in the event of an accident, illness, or other incapacity, regardless of whether I have authorized such expenses. As a parent/guardian, I assume the same risk for myself, and other family members and friends present at these horse activities.

Signed: _____ Date _____
(4-H Member)

Signed: _____ Date _____
(parent or guardian)

This form needs to be signed and on file for each youth participant in any 4-H horse program activity. The form needs to be signed each year and before a youth participates in the Ohio 4-H Horse Program Activities.

Under Ohio law, Section 2305.321 of the Revised Code, an equine activity sponsor, professional, volunteer, participant or other person is not liable for an injury to or the death of a participant in the equine activities resulting from the inherent risks of equine activities.

- OVER -

DUE: JUNE 1st

**PAS – PERFORMANCE AGAINST THE STANDARD PROGRAM
2018 STATE FAIR QUALIFICATIONS**

Note: Shaded areas represent changes in scores/times from previous year.

The rules for the program for 2018 will be as follows:

- At the beginning of the year the youth determines in which State Fair classes they want to qualify. They are limited to four classes. The four classes may be any of the classes offered at State Fair. The following is a list of all State Fair classes to be offered in 2018 and the minimum scores/or maximum times to qualify for these classes:

CLASS	QUALIFYING SCORE (JR/SR)	CLASS	QUALIFYING SCORE (JR/SR)
WESTERN SHOWMANSHIP	90	HUNTER OVER FENCES	75
HUNTER SHOWMANSHIP		EQUITATION OVER FENCES	75
SADDLE TYPE SHOWMANSHIP		HUNTER HACK	80
EASY-GAITED SHOWMANSHIP			
DRAFT SHOWMANSHIP		SMALL EQUINE HUNTER	75
		SMALL EQUINE JUMPER	0 FAULTS
WESTERN HORSEMANSHIP	85		
HUNT SEAT EQUITATION		DRAFT HORSE DRIVING	85
SADDLE SEAT EQUITATION		PLEASURE DRIVING	85
EASY-GAITED EQUITATION		DRIVING REINSMANSHIP	85
		DRIVEN TRAIL	65
WESTERN PLEASURE	85		
RANCH PLEASURE		RANCH RIDING	65
HUNTER UNDER SADDLE		WESTERN RIDING	
ENGLISH PLEASURE		REINING	
EASY-GAITED PLEASURE		TRAIL/TRAIL IN-HAND	
GROUND ROPING	QUALIFYING SCORE: 75% (90 OUT OF 120 POSSIBLE POINTS)		

GYMKHANA CLASSES – Time given is maximum time in seconds. The judge has the right to increase the maximum time, but is limited to one second for poor arena conditions or two seconds for extremely poor arena conditions. **Times are not to be rounded up or down.** (For example, if the qualifying time is 19.000 seconds and the horse/rider's time is 19.050, their time is greater than 19.000 seconds and is not a qualifying time.)

BARREL PATTERN	A Sec.	B Sec.	C Sec.	D Sec.
PONY or JUNIORS	22.500	21.000	20.000	18.500
SENIORS	21.500	20.000	19.000	17.500

POLES	Sec.	STAKES RACE	Sec.
PONIES or JUNIORS	25.500	PONIES or JUNIORS	18.500
SENIORS	24.500	SENIORS	18.000

KEYHOLE RACE	Sec.
PONIES or JUNIORS	10.500
SENIORS	10.000

PAS – PERFORMANCE AGAINST THE STANDARD PROGRAM
2018 STATE FAIR QUALIFICATIONS

2. After the youth turn in their class choices for State Fair qualification, the county needs to develop a qualifying show for all classes in which youth want to try out. Classes need to be subdivided as they are for State Fair with the exception that you need not divide showmanship, horsemanship, or equitation classes into as many age classes as is done at State Fair. Riding/driving classes should be divided so that a judge needs not evaluate more than approximately ten (10) youth at a time. If the show has classes that mix junior and senior youth, be sure to apply junior standards to juniors and senior standards to seniors.
3. A county (or group of counties) may offer up to two shows or have two judges at one show. In a show with two judges, the scores should not be averaged. Counties must hire judges approved to judge PAS shows from the current year's Ohio 4-H Horse Show Judges List. PAS approved judges have passed the certification requirements that are consistent with requirements for Beginner and Experienced Ohio 4-H Horse Show Judges (minimum 85% on the written exam and minimum 80% on live/video judging). This list can be found online at <http://horse.osu.edu>.
4. Gymkhana classes – Riders get one run (attempt) per class in a show to qualify unless county or counties are using one show with two judges to qualify youth. Then the youth may have two attempts (runs) as long as they are not disqualified in the first run. If the youth receives a no time in their first run then they are still eligible for their second run. If the youth receives a disqualification in their first run then they do not receive a second run.
5. See current rule book for requirements for all classes.
6. A horse cannot show at State Fair in both Trail In-Hand and in Trail classes.
7. A horse cannot show at State Fair in both Western Pleasure and Ranch classes.
8. A horse cannot show at State Fair in both Intermediate Equitation Over Fences and Advanced Equitation Over Fences classes.
9. A horse cannot show at State Fair in both Low Hunter Over Fences and Regular Hunter Over Fences.
10. A county may have requirements for youth to complete before they may enter State Fair qualifying shows (i.e. written tests, interview judging, club meeting attendance, etc.).
11. The show committee must have class score sheets printed for the judge when he/she gets to the show. These sheets are available on the internet site: <http://horse.osu.edu>. The judge will score the youth in the classes. As the sheets are turned in, someone from the show committee should sum the scores. These scores can then be compared to the required standards scores to determine if the youth qualified in that class for State Fair. Post the scores as soon as possible after the class is held so youth know what they have to do in future classes to qualify. If the judge gets to a point in the scoring that they know a youth will definitely not qualify for State Fair, they may place a NQ (not qualified) in the total score box on the evaluation sheet and quit keeping score on that youth.
12. PAS qualifying scores must be included on the county's PAS verification form submitted to the Ohio State Fair entry department by 12:59pm on Monday, July 9, 2018. It is the responsibility of each exhibitor to submit their entry and pay their stall fee online at www.ohiostatefair.com by 12:59pm on Monday, July 9, 2018. **BOTH THE PAS VERIFICATION FORM SUBMITTED BY THE COUNTY AND THE ENTRY FORM SUBMITTED BY THE EXHIBITOR MUST BE SUBMITTED BY 12:59PM ON MONDAY, JULY 9, 2018 FOR THE EXHIBITOR TO BE ABLE TO COMPETE.**
13. PAS classes should not be placed. If you wish to give awards, give awards based on score received (i.e. If a youth scores a 90 in showmanship, they get an award indicating excellence in that class.).
14. A youth may only use one horse to try out in PAS shows and cannot replace a horse for any reason after they have shown in their first PAS class.
15. A youth must qualify in any two (2) classes in order to compete in the State Fair Junior Horse Show. Counties may allow youth to qualify in more than two classes; however, youth may enter in a maximum of four classes at the State Fair Junior Horse Show, this includes ground roping. At the State Fair Junior Horse Show, youth will only be allowed to show in classes for which they qualified. **Youth should review the 2018 State Fair Junior Horse Show schedule carefully for potential class conflicts when selecting their classes. At State Fair, classes will not be held for class conflicts.**
16. Exhibitors that have animals that are of incorrect size for the entered class will be moved to the correct class.

PAS – PERFORMANCE AGAINST THE STANDARD PROGRAM
2018 STATE FAIR QUALIFICATIONS

17. Due to the expense of conducting horse shows, some counties may find it desirable to have a show that includes classes that are not judged by PAS standards. This is acceptable; however, PAS classes may not be combined with other classes.
18. Entry fees may be charged for PAS State Fair qualifying shows/classes to help cover the expense of these classes.
19. Multiple counties are encouraged to have joint qualifying shows to help decrease the cost of the shows.
20. Counties can send their youth to another county to qualify for any reason, but these guidelines must be followed:
 - a. The reason must be acceptable to the Extension Professional in both counties involved.
 - b. The Extension Professional is responsible for the entries being sent to State Fair by the entry deadline. If a youth qualifies out of county, the home Extension Professional must make the entry by the deadline. It is the responsibility of the youth to get the qualification results to their local Extension Professional.
 - c. The youth will pay the county to which they go a minimum of \$10 per class entered to cover the costs of their participation.
 - d. A youth cannot compete in more than two (2) PAS shows or one PAS show with two judges.
 - e. A county could elect to send all of their youth to one or two PAS shows instead of holding a PAS show in their county. Rules a-d apply.
 - f. If a county only offers one PAS show with one judge, and a youth wants to go to an additional PAS show, they may. Rules a-d apply.
 - g. An Out-of-County PAS form is available online at <http://horse.osu.edu>.
21. Show management should not expect judges to give comments to youth in PAS classes since the youth can see their evaluation on the posted score sheets.
22. Easy Gaited horses may not show in riding classes that require a trot. Correct tack and attire for Easy Gaited Equitation and Easy Gaited Pleasure is Saddle Seat or Western tack and attire, respectively. **Easy Gaited classes for State Fair will be two gaited classes (no canter).** Gaits will be a Show Walk and a Show Gait. County qualifying classes will also be two gaited. In Easy Gaited Pleasure, the Show Gait will be worth 70 points since they do not canter.
23. A youth may show in draft (horse or pony) or light (horse or pony) driving, but not both. A heavy harness is expected in draft classes while a light harness is expected in light horse/pony driving classes.
24. **Patterns for 2018 PAS qualifying classes are included at the end of this document. These patterns are the only patterns to be used for PAS classes in 2018.** In addition to these patterns, the following rules will apply for the specified classes:

PAS Qualifying Showmanship Rules

 - a. A judge may bring the class into the arena and then do the pattern, or they may work the youth as they enter the arena. Draft horses are an exception in that they will always come into the arena and work out of the line.

PAS Qualifying Horsemanship/Equitation Rules

 - a. For Western Horsemanship and Hunter Equitation, the judge may work the pattern as the rider enters the area and then bring either the finalist or the whole class back for rail work. They may work the rail first and do the pattern afterward for any Horsemanship/Equitation class. Saddle Seat and Easy Gaited Equitation will always work the rail first.



DON'T FORGET THE HELMET RULE

**Helmets must be worn
during any event that is
sponsored by or
sanctioned by 4-H**

Mandatory Helmet Use Policy (4-H Equine)

All youth 19 years and under, participating in any 4-H equestrian activity, are required to wear properly fitted protective headgear which meets or exceeds current ASTM (American Society for Testing and Materials)/SEI (Safety Equipment Institute) standards with the chin harness securely fastened at all times while riding or driving an equine.

It is the responsibility of the rider, or the parent or guardian of the youth participant, to make sure that the headgear worn complies with appropriate safety standards for protective headgear intended for equestrian use, and is properly fitted and in good condition. The Ohio 4-H Horse Program, Show Committees, Officials, Extension Personnel and Volunteer Leaders are not responsible for checking headgear worn for such compliance.

The Ohio 4-H Horse Program, Show Committees, Officials, Extension Personnel and Volunteer Leaders make no representation or warranty, expressed or implied, about any protective headgear, and cautions riders that death or serious injury may result despite wearing such headgear, as no helmet can protect against all foreseeable injuries in equestrian activities.

The Ohio 4-H Horse Program, Show Committees, Officials, Judges, Extension Personnel and Volunteer Leaders may, at his/her discretion, check a participant's protective headgear for proper standards. If the youth is found to be wearing unapproved, defective, or improperly fitted headgear, he/she will not be permitted to participate in riding or driving activities until proper headgear is acquired.

TROXEL HELMET FITTING GUIDE

I. Determine the Size Needed.

Measure the head using a cloth measuring tape, or a piece of string you can measure with a ruler afterward, approximately one inch above the eyebrows around the full circumference of the head.

Once measured, you should have a measurement in either inches or centimeters.

Use this measurement, along with the Troxel Sizing Chart, to identify the appropriate size as Small, Medium, or Large.

II. Prepare the Helmet for Fitting.

Make sure all the Flip-Fold pads are flat and not flipped under. Most Troxel helmets incorporate a stabilization system, a GPS (Gripper Positioning System). Identify which GPS system the helmet has:

- GPS I – This system uses a 'Y' shaped piece of equipment in the back of the helmet to reduce bobbing of the helmet.
- GPS II – This system uses a soft-touch dial to customize the fit. (Figure A)
- GPS III – This system uses a mechanism the rider 'pinches' together to adjust the fit. (Figure B)

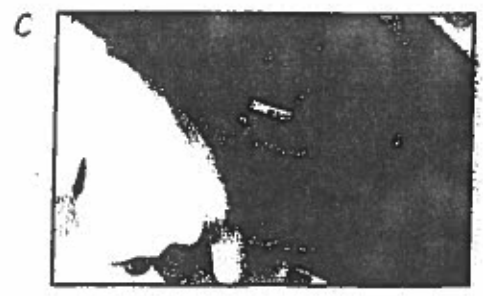
Verify one of the following:

- The GPS I is pulled all the way down and back; or
- The GPS II dial is let out all of the way; or
- The GPS III is completely opened to the widest point.



III. Prepare the Headliner for Fitting.

1. Try the helmet on to ensure it fits the head comfortably without causing any pressure points, such as squeezing the sides of the head or pressing on the forehead.
2. If the helmet feels too tight, move up to the next size.
3. If the helmet is loose, engage the Flip-Fold pads by folding them under to create a snugger fit. If the helmet still feels too loose once all the Flip-Fold pads are folded under, remove the existing THIN Flip-Fold liner, and replace with the THICK Flip-Fold liner provided in the box, and adjust accordingly. (Figure C)
4. If the helmet is still too loose with the THICK Flip-Fold pad folded under to the thickest adjustment, then go down a size and begin the fit process from Step 2.



IV. Customize the Fit Using the GPS.

After the headliner is adjusted, further fit the helmet by adjusting the GPS stabilization system in the following ways:

Adjust the GPS I by sliding the GPS snugly to cup the back of the head.

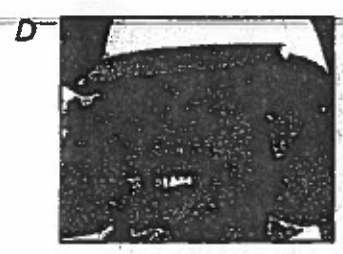
Adjust the GPS II by turning the dial to tighten the GPS. (Figure A)

Adjust the GPS III by pinching together the micro adjustable slides to snug the GPS system to the head. (Figure B)

Keep in mind, when adjusting the GPS there may be increased pressure on the forehead. If this occurs, simply let out the GPS a little or readjust the Flip-Fold pads.

V. Evaluating Helmet Fit.

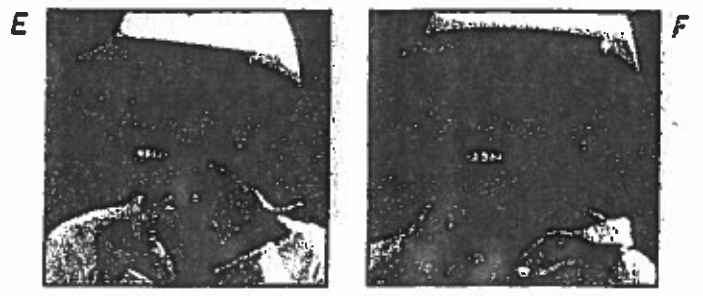
1. Fit – The helmet should feel snug around the entire head without pressure points.
2. Position – The helmet should sit level on the head and the forehead is covered within two fingers width of the eyebrows. (Figure D)



VI. Positioning Straps and Buckles.

1. Side Straps – Adjust the triangle shaped slider on both sides of the helmet to form a 'V' shape under and slightly in front of the ears. (Figure E)

2. Chin Strap – Roll the rubber band keeper towards the triangle shaped slider on the side strap. Put the helmet on and buckle the chin strap. Starting with the straps loose, hold onto the buckle with one hand and tighten the straps by pulling the ends straight out with the other hand. No more than one or two fingers should fit under the tightened chin strap. Roll the rubber band down towards the buckle while folding the straps under the rubber band to secure them. (Figure F)



Helmet Fit Tests

- Open your mouth in a big yawn. The helmet should pull down on the head. If not, tighten the chin strap.
- Does your helmet rock back more than two fingers above the eyebrows? If so, unbuckle and shorten the front strap and then retighten the chin strap and test again.
- Does your helmet rock forward into your eyes? If so, unbuckle and tighten the back strap and then retighten the chin strap and test again.

Ohio 4-H Horse Program Protective Headgear Policy

Frequently Asked Questions*

1. *Is protective headgear required to be worn at mounted meetings, trail rides, or other 4-H equestrian events?*

Yes. Properly fitted ASTM/SEI approved protective headgear intended for equestrian use is required to be worn by all youth ages 19 and under while riding or driving an equine at any 4-H sponsored activity.

2. *Many open horse shows that are NOT sponsored by 4-H have classes for 4-H members only. Are helmets required to be worn by 4-H members if they participate in such classes?*

The Ohio 4-H Protective Headgear Rule is in effect for 4-H sponsored shows and activities only.

3. *Does protective headgear have to be worn in showmanship classes?*

No. Properly fitted ASTM/SEI approved protective headgear intended for equestrian use is required when a youth is riding or driving an equine during any 4-H activity, not when exhibiting an equine in-hand. However, the use of protective headgear intended for equestrian use is encouraged in all classes, and any exhibitor may wear protective headgear in any class without judging discrimination.

4. *What style protective headgear should be used for western or driving classes?*

Any style of ASTM/SEI approved protective headgear intended for equestrian use is allowed in western or driving classes, including western, english, or schooling helmets. It is the responsibility of the rider, or the parent or guardian of the youth participant, to make sure that the headgear worn complies with appropriate safety standards for protective headgear intended for equestrian use, is in good condition, and is properly fitted with the chin harness fastened at all times while riding or driving.

5. *Are helmets required when riding outside the show ring?*

All youth age 19 and under, participating in any 4-H equestrian activity, are required to wear properly fitted ASTM/SEI helmet intended for equestrian use with the chin harness securely fastened at all times while riding or driving an equine anywhere on the competition grounds. Any exhibitor found in violation of this rule at any time will be prohibited from participating until proper safety headgear is in place.

6. *Are bicycle or other helmets with a harness allowed?*

No, bicycle helmets or hunt caps with a single chin strap are NOT acceptable. Only ASTM/SEI approved protective headgear intended for equestrian use is allowed.

7. *May protective headgear be modified in any manner?*

No, other than to adjust the fit with pads supplied by the manufacturer.

8. *May helmet covers be used?*

Covers may be used provided they can be removed for inspection of the helmet if necessary.

9. How should show committees or officials enforce the rule?

The Ohio 4-H protective headgear policy should be included in the show/event program or in the event rules. The show committee or officials are not required to inspect protective headgear *unless* the appropriateness of such headgear is questioned. In such cases, the show committee or officials have the authority to inspect the headgear and enforce the rule as stated in the current Uniform Rules for 4-H Horse Shows (4-H 179). Any exhibitor found to be in violation of the rule will be prohibited from further participation until appropriate headgear is properly in place.

10. If it is determined during a show class that an exhibitor is using inappropriate headgear, how should the show committee or officials respond?

If the show committee or officials determine that the headgear is inappropriate and the exhibitor is in violation of the protective headgear rule, the exhibitor will be disqualified from that class. The exhibitor should be prohibited from further participation until appropriate headgear is properly in place.

11. How should a show committee or official respond if it is questioned that an exhibitor is riding with headgear that is not in compliance with current rules (i.e. currently riding in a class or riding on the show grounds)?

If it is brought to the show committee's or show official's attention that a youth's headgear is questionable, the show committee must immediately investigate and determine the accuracy of the report. If the headgear is not in compliance with the protective headgear rule, the show committee or official must prohibit the exhibitor from further riding/driving until properly fitted ASTM/SEI approved headgear is in place. The show committee or officials may investigate the appropriateness of headgear without a formal protest.

13. Should counties or 4-H clubs buy helmets for use by 4-H members at 4-H sponsored events?

No. Protective headgear should only be purchased or owned by the 4-H member or their parent(s) or guardian(s). It is the responsibility of the rider, or the parent or guardian of the youth participant, to make sure that the headgear worn complies with appropriate safety standards for protective headgear intended for equestrian use, and is properly fitted and in good condition.

For more information on ASTM/SEI approved headgear:

American Medical Equestrian Association

www.emsaonline.net/Equestrian_Safety_Program.html

Identification of ASTM/SEI approved headgear and proper headgear fit:

US Equestrian Federation website at: www.usef.org - Go to Rules or Safety

Suppliers of ASTM/SEI approved headgear

www.seinet.org

Helmet replacement program for damaged helmets

www.horsehelmets.com

University of Connecticut Helmet Safety Program

www.canr.uconn.edu/ansci/equine/helmet_safety

* This information was adapted from the Pennsylvania 4-H Horse Program Protective Headgear Policy - Questions and Answers

PROJECT INFORMATION

NAME _____ DATE OF BIRTH _____
ADDRESS _____ CITY _____ ZIP _____
CLUB NAME _____ YEARS IN 4-H _____
PARENTS' NAME _____ TELEPHONE _____
NAME OF HORSE _____ NUMBER, IF REGISTERED _____
IF REGISTERED, IN WHOSE NAME _____
BREED _____ SEX: MARE _____ GELDING _____ FOAL _____
COLOR: BAY _____ CHESTNUT _____ BLACK _____ GREY _____ SORREL _____ OTHER _____
HORSES AGE _____ CLASS: HORSE _____ PONY _____ HEIGHT _____
FLU VAC _____ RHINO _____ COGGINS _____
RESIDENCE: FARM _____ RNF _____ TOWN _____
LOCATION OF HORSE: _____

"Page 84 of the Fair Book: Possession of animals: Animals must be cared for by the youth member after a project is weighed-in, tagged-in or registered as a project. Animals must be stalled at the Exhibitor's residence (as defined by school registration or driver's license). Any other location must be submitted in writing to the Jefferson County Jr. Fair Committee prior to start of project for approval by the Committee. During the project year, if circumstances require a change in location and/or possession, the same written permission must be submitted and approved. The Stalling location must be within a 30 mile radius of the exhibitor's residence for consideration. Failure to comply with the possession rule will result in the exhibitor being suspended from participating on any level in the Jefferson County Fair for one (1) year."

PLEASE INCLUDE THREE (3) PICTURES OF YOUR HORSE

(Parent Signature)

(Advisor Signature)

(Member Signature)

DUE: JUNE 1st

HORSE'S IDENTIFICATION FORM

4-Her's Name _____ County _____

Horse's Name _____ 4-H Club Name _____

Horse _____ Pony _____ Height _____ Sex _____ Age _____

Breed or Type (saddle, hunter, stock) _____

Basic Color _____ Face and Leg Markings _____

On Diagram Below, **OUTLINE** with Dark Solid Lines
ALL White Markings.
 Show **ALL** SCARS and BRANDS.

Check if leased horse

DRAW IN HEAD MARKINGS

DRAW IN EVERY WHITE AREA

INDICATE ALL DARK SPOTS WITHIN WHITE AREAS

4-H Horse Leasing Guidelines

One purpose of 4-H horse projects is to teach young people how to feed, fit, show, and care for their animal(s). The more important purpose is to provide an opportunity for personal growth and development of the young person. Ohio 4-H realizes that some youth are unable to have an actual horse for their 4-H horse project. Options available to these individuals include:

- Lease a horse from another individual
- Horseless Horse Project (project number 173)

What Is The Purpose Of Leasing A Horse As A 4-H Project?

- A lease program is appropriate in the 4-H program when one or more of the following conditions exists:
 1. Youth does not have the financial ability to purchase a horse.
 2. Youth has a horse but it is unable to be used (lameness, pregnancy, too young, etc).
 3. Youth has a horse but it is the wrong type for the educational experience the youth wishes to obtain.

What Are Expectations Of The Horse Owner?

- An individual (lessor) who leases a horse must be willing to:
 1. Relinquish all rights to train, handle, and care for the horse in order for the youth to complete the requirements of a 4-H horse project. Potential owners should not lease horses they want to ride or show on a regular basis during the term of the lease.
 2. Not take the horse back prior to the end of the lease unless the youth agrees to return the horse.
 3. Have the youth (or parent/legal guardian) sign whatever agreements they decide upon in regard to care of the animal.
 4. Allow the youth to transport and show the horse in 4-H, open, or breed shows.

What Are Expectations Of The 4-H Participant?

- An individual (youth) who leases a horse as a 4-H project:
 1. To be responsible for the care of the animal in whatever manner is mutually agreeable to both the owner (lessor) and youth (lessee).
 2. To complete a horse identification form as required by local counties to identify the horse as a 4-H project.
 3. As a part of the educational experience of leasing a horse, to work in consultation with the owner (lessor) to develop a lease agreement on the horse selected for the Ohio 4-H program (see attached suggestions for developing a lease agreement).
 4. Prior to any deadline date established by your local County Extension Office, to submit to the local County Extension Office a completed copy of the horse identification form and lease agreement for verification purposes ONLY.

What Should Be Included In A Lease?

- Every lease is unique in the items that must be covered to protect both the owner (lessor) and the youth (lessee). A lease should be drawn and signed by the owner and the youth to insure adequate care of the animal, protect the investment of the lessor, and to detail the responsibility of the youth in regards to caring for the animal. It is wise to have a written lease agreement any time you are using someone else's horse, even if the owner is a family member. A lease can assist in preventing misunderstandings and unhappiness between the horse's owner and youth leasing the horse.
- We suggest the following issues, but not limited to these, be addressed in a lease:
 1. Identification of the horse (name, registration number if registered); the name, address, and phone number of the youth (lessee) leasing the horse; the name of parent/guardian if the youth is under 18 years of age; the name, address, and phone number of the owner (lessor).
 2. Who is responsible in case of injury or death to the horse. Who pays veterinarian bills, and what would be the maximum amount you are expected to pay in veterinarian costs if injury costs are your (lessee's) responsibility. In addition, if the animal is injured and unusable, who has to nurse the animal back to health? An owner (lessor) may require you to take out insurance on the horse with the owner as the beneficiary to cover possible loss due to the death of the horse.
 3. Where the horse will be housed and who is responsible for the daily care of the horse; any feed, health care (i.e. deworming, vaccinations, etc), foot care, and/or special stabling requirements made by the owner.
 4. The purpose(s) for which the horse will be used, and that it can be transported at the youth's discretion to shows.
 5. Any limitations that would be placed on the owner's use of the horse. Refer to the current Uniform Rules for 4-H Horse Shows (Circular 179) for limitations caused by the animal being a 4-H project and include them or reference them in a statement, and make a copy of the rules available to the owner of the horse.
 6. A statement on the time period covered by the lease and under what conditions and time frame the lease can be discontinued.
 7. The owner should have a statement included relieving them of liability in cases of property damage, injury to the youth, or injury to a third party while the horse is under the lessee's supervision.
 8. A place for signatures for the owner (lessor) and the youth (lessee) with a line for parent/guardian if the youth is under 18 years of age.

The above mentioned issues are only suggestions, and we can not advise you as to specific terms or wording in a lease agreement. You may even want to consult an attorney.

Horse Calendar of Events

June 2019

10 - State 4-H Hippology Contest

10 - State 4-H Horse Judging Contest

July 2019

1 - State 4-H Horse Poster Contest

15-19 - Ohio State Fair Junior Horse Show

15 - Ohio State Fair Junior Horse Show- Western Dressage Show

16 - Ohio State Fair Junior Horse Show- Classical Dressage Show

TBD - Ohio State Fair Horse Skillathon

September 2019

6-7 - State 4-H Competitive Trail Ride

21 - State 4-H Groom & Clean Contest

November 2019

30- Ohio 4-H Horse Show Judges Conference

TBD- Multistate 4-H Horse Show Judges Conference

**THE OHIO STATE UNIVERSITY**COLLEGE OF FOOD, AGRICULTURAL,
AND ENVIRONMENTAL SCIENCES<https://ohio4h.org>**State Equine Extension Specialist:**

Dr. Kimberly Cole
Animal Sciences Building, Room 222D
2029 Fyffe Ct.
Columbus, OH 43210
Phone: 614-292-2625
Email: cole.436@osu.edu

Youth Programs Equine Extension Associate:

Masa Williams
Animal Sciences Building, Room 222A
2029 Fyffe Ct.
Columbus, OH 43210
Phone: 614-688-8109
Email: williams.5467@osu.edu

OHIO 4-H YOUTH DEVELOPMENT

College of Food, Agricultural, and Environmental Sciences

The Nationwide & Ohio Farm Bureau 4-H Center
2201 Fred Taylor Drive
Columbus, OH 43210
Phone: 614-292-4444
Fax: 614-292-5937
