

Cooperative **CONNECTION**

Covering county news and events for Extension programs, including
Agriculture & Natural Resources and 4-H Youth Development



The Final
Countdown to
Spring...

MARCH - APRIL | 2021

THIS ISSUE...

Letter from the Editors.....page 2
Hay Quality.....page 3
Grafted Plants
Pesticide Exam Information.....page 4
Event Calendar
Extension's Most Wanted.....page 5
Public Events.....pages 6-11

4-H Events & Updates.....pages 12-22
4-H Calendar.....page 15
Leslie's Cloverbud Corner.....pages 22
Meat Cutting Workshop.....page 23

This issue is dedicated to Vickie Whinnery, Chris Molinaro, Patricia Ambler and all of our dear friends who we have lost over the last year

Letter from the Editors



Dear Readers,

There is no question about it - the past year has been tough. We are approaching day 365 since our physical office location closed last March, and while we have returned part-time to the office, things are just not the same. Many of us have lost loved ones and/or have endured job loss, supply shortages, inclement weather and illness. We have lost too many in our community who dedicated their lives to making the best better, and our hearts reach out to their families and friends. We do have some silver linings to look towards as we push onward, and we are hopeful that the worst is behind us.

We have a packed newsletter for March and April, with activities in the world of 4-H and Agriculture & Natural Resources ramping up. Stay tuned to our county webpage and Facebook groups for additional events as they become available. Seed library programs hosted by the Jefferson & Harrison Master Gardener Volunteers will be up and running soon, and we will make sure to provide more information as it becomes available.

We have a slight change in our office schedule - we are now open to the public Mondays 8 AM - 1 PM and Wednesdays and Fridays 8 AM - NOON and 1 PM - 4 PM, no appointment required to purchase books, register for programs or just to have a chat about the farm or garden. You can also schedule an in-office appointment with us on Tuesdays and Thursdays. We are still requiring anyone entering the office to follow safety protocols, including masks. We will continue to offer curbside assistance as needed - just call when you arrive during open hours on Mondays, Wednesdays and Fridays and someone will be down to meet you. Remember - if you feel sick, stay home!

If you have any questions regarding our hours, events, projects, etc., give us a call at 740-264-2212. For a calendar of public events, see page 5. For county Extension updates, stay tuned at jefferson.osu.edu or follow us on Facebook (@JeffCoExtension).

Time to get growing!

ANGIE ALLISON

4-H Youth Development

ERIKA LYON

Agriculture & Natural Resources



Spotted lanternfly nymphs will begin to emerge in April and May...Help us spot spotted lanternfly! Contact the Ohio Department of Agriculture at 614-728-6201 or use the Great Lakes Early Detection Network App to report sightings of this insect!



HAY QUALITY: WHAT A DIFFERENCE A YEAR MAKES, OR DOES IT?

By Ted Wiseman, OSU Extension, Perry County (originally published in Farm and Dairy)

We can certainly say this past year has had its challenges. However, quality of forages made in 2020 was much better for most compared to the previous two years. Weather conditions were more favorable especially for first cutting. The late frost in May set our forages back and for many first cutting forage yields were extremely low. Second, third and four cuttings were better, but overall hay supplies are tight again for some.

Again in 2020 Extension Educators in 10 counties have collected forage samples from across the state. Chart 1 is data collected in 2019. I know we would like to forget the condition of forages in 2019, but I have included it for comparison to forage quality in chart 2 for 2020. To clarify most of these samples are not from the same producer or the same fields. This demonstration is to make a simple comparison of the overall quality of random forage samples.

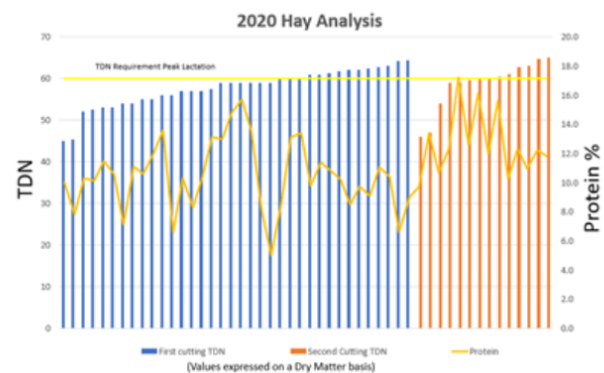
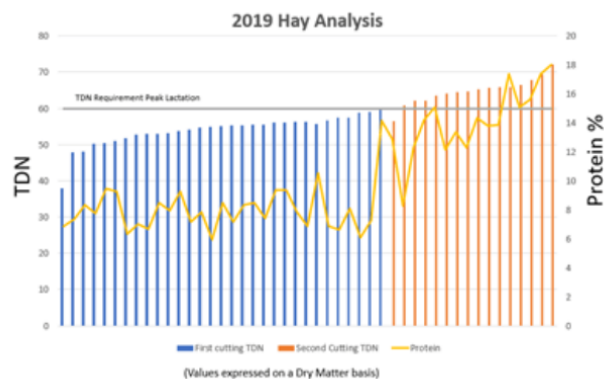
Percent TDN (total digestible nutrients) is a measure of the amount of energy in the feed. Basically, this equates to the number of calories. Percent protein shown as the yellow horizontal line is a measure of the protein that is available to the animal for maintaining muscle and body systems. It is also very important for development of the calf she is carrying. In both charts the vertical blue bars represent 1st cutting hay samples while the vertical orange bars represent 2nd cutting.

For a 1200-pound cow, a TDN level of 60% is needed for a cow in peak lactation, 54% at calving, and 49% for the last trimester. The corresponding protein levels for each of these times would be 8, 10 and 11 percent, respectively. Looking at the charts you will notice that in 2019 we certainly had some issues with meeting cattle TDN requirements with first cutting hay. Although many would have been adequate for the last trimester and at calving. In 2020 samples tended to be much better and would have met their nutritional needs for most.

However, for both years some samples still fall short of having high enough levels of energy or protein for the 3 stages of pregnancy in this example. It is also notable that higher TDN levels do not translate into higher protein levels regardless of what time of year the forage was harvested.

No matter how good or bad of a forage harvest season we have, it is extremely beneficial for producers to collect forage samples. Regardless of what specie of livestock you have, knowing what the quality of forage you are feeding is well worth the costs of the sample.

EDITOR'S NOTE: For more on Analyzing Forage Quality to Meet the Nutritional Needs of the Beef Cow, see Wiseman's Ohio Beef School presentation from February 1, 2021.





Grafted Plants: What They May Offer You and How to Obtain Them

By Matt Kleinhenz, Professor, OSU Department of Horticulture and Crop Science

Grafting creates physical hybrids between seedlings of at least two varieties. The rootstock variety is used for its root system and traits and the scion variety is used for its shoot and fruit traits. Grafting is providing growers with an expanding list of key plant traits more rapidly and in different combinations than standard hybrid variety development. These traits include resistance to specific soilborne diseases (e.g., Fusarium, Verticillium) and the ability to overcome various abiotic stresses (e.g., salinity, drought, low fertility). Plant growth at low soil temperatures, improved fruit quality, and/or greater fruit holding ability on the vine may also be possible in specific cases. Among grafted crops, field and high tunnel acreage of tomato and watermelon are greatest, although interest in and acreage of grafted pepper, eggplant, cucumber, and melon are also rising.

Resources to help growers make the best use of grafting are also increasing and improving. The most important resource is growers who have experimented with grafted plants and share their experiences and views. Online resources (e.g., <http://www.vegetablegrafting.org/>) can also be useful. For example, one site (<http://graftingtool.ifas.ufl.edu/>) helps growers “run the numbers” on grafting’s potential impact on their bottom-line. That decision-support tool improves as information from farm-level tests of grafting is added.

Growers also ask how they can obtain grafted plants. The number of operations supplying Ohio and the U.S. (vegetablegrafting.org/resources/suppliers) is rising. I have personal experience with the three suppliers listed below in alphabetical order. Contact them soon if you are interested in receiving grafted plants for use in 2021.

1. Banner Greenhouses (Nebo, NC; ph. 828-659-3335; bannergreenhouses.com).
2. Re-Divined (Bainbridge, PA; ph. 717.286.7658; grafted@redivined.net; redivined.weebly.com).
3. Tri-Hishtil (Mills River, NC; ph. 828.891.6004/828.620.5020 – Chris Furman; sales@Tri-Hishtil.com; trihishtil.com).

Grafted plants can also be prepared by the same person or farm that uses them in the field or high tunnel. Many guides describing how to graft vegetables are available. The following are a small number of examples.

1. u.osu.edu/vegprolab/grafting-guide and other resources at u.osu.edu/vegprolab/research-areas/grafting-2.
2. vegetablegrafting.org/resources/grafting-manual.

Please contact me if you need additional information.

PESTICIDE EXAM INFORMATION

Due to the COVID-19 pandemic, we ask that every person taking the exam do a self-check before entering ODA’s campus or a regional exam location. Please take your temperature at home to ensure you do not have a fever. If you are feeling sick, please reschedule your exam.

ODA has started offering regional exams in several counties at the Ohio State Extension Offices. Visit the registration link below to view scheduling and locations available.

3-hour testing sessions will be scheduled on Tuesdays, Wednesdays and Thursdays in Reynoldsburg.

9 am exam – No Building Entry Until 8:45 am

1 pm exam – No Building Entry Until 12:45 pm

Preregistration is required. No walk-ins will be permitted.

Face masks are required and must be worn at all times.

Masks are available at the security desk if needed.

Photo IDs will be required.

Pencils and calculators will be provided.

No more than 9 people will be allowed per session, plus a proctor.

Per OAC 901:5-11-08(A)(7), applicants must wait five (5) business days between testing sessions.

Multiple exams may be taken during a session, however, due to limited space, you may only register for one session per week.

Register for exams at pested.osu.edu/PrivateApplicator/testing

****Keep in mind exam sessions may be booked out over 2 months in advance.**

See page 9 for future study sessions

SEASON CALENDAR

MARK YOUR CALENDARS!

MARCH

- 3/3 Pastures for Profit Webinar 7 PM
- 3/4 Master Gardeners Lunch & Learn 12 PM
- 3/5 Food Waste: Trends & Updates 11 AM
- 3/5 Local Food & Direct Marketing 12 PM
- 3/10 Master Gardeners Happy Hour 4 PM
- 3/10 Farm Office Live 7 PM
- 3/11 Climate & Grain Market Outlook 10 AM
- 3/11 East Ohio Women in Agriculture Webinar 12 PM
- 3/11 Pesticide & Fertilizer Study Session 7 PM
- 3/12 A Day in the Woods Webinar 10 AM
- 3/12 Farm Office Live 10 AM
- 3/15 Farm Income & Financial Outlook 12 PM
- 3/18 Master Gardeners Lunch & Learn 12PM
- 3/22 Seed Saving Program @ Puskarich Public Library
- 3/24 Master Gardeners Happy Hour 4 PM
- 3/25 East Ohio Women in Agriculture Webinar 12 PM
- 3/26 Soilless Strawberry School 10 AM - 3 PM
- 3/26 Friday Farm Coffee Break 10 AM
- 3/26 Mini Meat Cutting Workshop Part I
- 3/27 Mini Meat Cutting Workshop Part II
- 3/30 Pesticide & Fertilizer Study Session 7 PM
- 3/30 Seed Giveaway @ Puskarich Public Library

APRIL

- 4/1 Master Gardeners Lunch & Learn 12PM
- 4/6 East Ohio Women in Agriculture Field Day, Rayland, OH 5:30 PM
- 4/7 Farm Office Live 7 PM
- 4/7 Discovering Morels 12 PM
- 4/8 East Ohio Women in Agriculture Webinar 12 PM
- 4/9 Farm Office Live 10 AM
- 4/9 Mini Meat Cutting Workshop Part I
- 4/10 Mini Meat Cutting Workshop Part II
- 4/15 Spotted Lanternfly: A New Invasive in Jefferson County 12 PM
- 4/19 Pesticide & Fertilizer Study Session 7 PM
- 4/22 East Ohio Women in Agriculture Webinar 12 PM
- 4/23 Friday Farm Coffee Break 10 AM
- 4/23 Mini Meat Cutting Workshop Part I
- 4/24 Mini Meat Cutting Workshop Part II

*Subject to change

For a schedule of Agronomy programs, see page 9. Visit jefferson.osu.edu or join the Agriculture & Natural Resources Group on our Facebook page @JeffCoExtension for updates and future webinars, podcasts and other great opportunities!

EXTENSION'S MOST WANTED



SPOTTED-WING DROSOPHILA

There are fruit flies, then there is this fruit fly. Spotted-wing drosophila (SWD) has been present in Ohio for a few years now. It is a fruit fly like no other - it feeds on healthy ripening soft-bodied fruits rather than on past ripe fruit sitting in your trash for too long. This can be a problem for fruit growers - because it feeds on fruit before harvest, it can cause significant damage to a crop and allow for mold issues during post-harvest transport and storage.

SWD originates from southeastern Asia and was first identified in the US in Hawaii in 1980, and ~30 years later in California. Since 2008, it has spread to 48 states, including Ohio in 2011. This fruit fly feeds on a wide variety of fruit hosts, including cherries, strawberries, raspberries and blackberries, blueberries, grapes, and peaches, as well as wild hosts such as honeysuckle, wild grapes, mulberry, elderberry, buckthorn. They lay their eggs within the fruit tissue that further damages crops.

Infestations of SWD develop quickly. A single female can lay over 350 eggs in the lifespan of the fruit fly, which is about 30 days. This assumes that the adult doesn't overwinter, which some adults do, restarting the infestation the following growing season.

Practicing sanitation by removing (and destroying) overripe fruit and frequently harvesting can go along way to reducing SWD populations. For small operations, 80 gram exclusion netting such as floating row covers provides a physical barrier that prevents adult flies from laying eggs in healthy fruit. However, netting can also block pollinators from reaching flowers and can be costly for larger operations.

There are insecticide options available to control SWD. To review these options, visit ohioline.osu.edu/factsheet/ent-86 or contact your local Extension office for a copy of *Monitoring and Managing Spotted wing Drosophila in Fruit Crops*. Bring in suspect insects to our office during the growing season for identification.



Photos by Hannah Burrack, North Carolina State University, Bugwood.org

Jefferson & Harrison **MASTER GARDENER VOLUNTEERS**

Seed Saving Program & Spring Seed Giveaway

Watch the seed saving video available starting March 22nd at <http://www.harrison.lib.oh.us> or view on Facebook @PPLOHIO. Program participants will get to take home several varieties of heirlooms to grow at home and contribute the new seeds produced to the Master Gardener Volunteer Seed Library.

On March 30th, anyone wanting to grow plants from seed this spring can pick up hybrid varieties at Puskarich Public Library. Seeds will be available during library hours.

MASTER GARDENER VOLUNTEERS HORTICULTURE LUNCH & LEARN and HAPPY HOUR WEBINARS

**Continuing this March & early April and
open to the public! Full schedule and
registration information available at
mastergardener.osu.edu/lnlhh**

Lunch & Learns
Thursdays 12-1 PM
March 4
March 18
April 1

Happy Hours
Wednesdays 4-5 PM
March 10
March 24

OHIO WOODLAND STEWARDS

A DAY *in the* WOODS

We are pleased to announce that A DAY in the WOODS will be offering winter programming on the 2nd Friday of each month 10 - 11:30 AM (January-March 2021) virtually. We hope to offer some live programming later in 2021, and will provide details when they become available. For more information about our exciting line up of programs this winter visit go.osu.edu/2021dwwinter

March 12, 2021 – *Native trees and shrubs for wildlife* with Ryan Boyer (National Wild Turkey Federation), Dave Apsley (OSU Extension), and Marne Titchenell (OSU Extension and SENR)

Also, don't forget to visit u.osu.edu/seohiowoods regularly to view our ever growing video library of including: Tree ID series, chainsaw safety and maintenance series, and 25+ videos from our 2020 DAY in the WOODS offerings.



Soiless Strawberry School Greenhouse-focused Track*

Learn all you need to grow strawberry in soiless substrates under greenhouse and high tunnel conditions!

**Friday March 26th, 2021
10AM – 3PM (EDT)**

Online live lectures and discussion on March 26th
Recordings will be available for additional 2 weeks

Registrations fees: \$180 per person
Ohio resident discount available (please contact Chieri Kubota)

[Click here for more information](#)

Register by 3/23/21
Contact for your questions: Chieri Kubota (kubota.10@osu.edu)



Jefferson & Harrison **MASTER GARDENER VOLUNTEERS**



***NOW ACCEPTING
APPLICATIONS***

Training Topics

basic botany
soils, fertilizer and compost
entomology
plant pathology
integrated pest management
plant propagation and houseplants
lawn care
home herb, vegetable and fruit
production
backyard wildlife management
pollinators

NEW THIS YEAR: The 2021 Master Gardener Volunteer training will consist of both online modules, hands-on labs and tours, and either a writing or presentation project. Interns are expected to attend orientation and a minimum of 5 labs but can pick and choose either by topic or date that best fits into their schedule. Cost of the training is \$100 per person.

Orientation and lab schedule:

Monday, July 12 th	5-8 PM	Master Gardener Volunteer Orientation & Teaching Skills Lab
Thursday, July 22 nd	5-8 PM	Garden Soils Lab
Tuesday, July 27 th	1-4 PM	Plant Diagnostics Lab
Thursday, August 5 th	5-8 PM	Propagation Methods Lab
Monday, August 9 th	1-4 PM	Fruit Production Lab
Wednesday, August 11 th	5-8 PM	Fruit Production Lab
Thursday, August 12 th	1-4 PM	Season Extension Lab
Monday, August 23 rd	1-4 PM	Arboretum Tour
Tuesday, August 31 st	5-8 PM	Pollinator Plot Tour
Thursday, September 2 nd	1-4 PM	Project Presentations



Master Gardener Volunteers in Ohio offer assistance with home horticultural questions, pest identification, school programs, demonstrations, research, and continuing education programs. Working with county Ohio State Extension personnel, Master Gardener Volunteers provide educational services to their communities. If you are a garden enthusiast, this is a great opportunity to share your gardening know-how and skills with others in your community.

To learn more about the application process, visit go.osu.edu/becomejeffharmgv. Send questions to Erika Lyon at lyon.194@osu.edu or call 740-461-6136.





Ohio Field and Farm

Buckeye Beef Byte Podcast

New episodes found at
go.osu.edu/beefbyte



Friday Farm Coffee Breaks @ 10am
20 minute videos posted to
go.osu.edu/farmcoffeebreak

March 26: Water Quality Testing
April 23: Noxious Weeds of Eastern Ohio
May 28: Where to Get Started with Farming
June 25: Forage ID

Questions? Contact Erika Lyon at
lyon.194@osu.edu or 740-461-6136
Cooperative Connection



East Ohio Women in Agriculture Upcoming Events & Webinars

Webinars run from 12-1 PM & Field Days begin at
5:30 PM

- March 11 - LOL –Lots of Loans! Hear from our panel to find the right fit for your needs. (webinar)
- March 25 - The Mystery of Fruit Tree Pruning (webinar)
- April 6 - Soils and Sustainable Agriculture Field Day, Rayland, OH
- April 8 - Bury Seeds, Not Stress (webinar)
- April 22 - Reaching Your Educational Goals (webinar)

Webinar registration and more information is available at
go.osu.edu/eowiaseries2021

(Webinars will be recorded for later viewing.)

Field Day registration and more information is available at
go.osu.edu/eowiafielddays2021

Pastures for Profit

The virtual Pastures for Profit course will consist of three 90-minute webinars offering a variety of pasture and grazing topics. Once registered, attendees will be granted access to the online course including the webinars and complementary resources. Participants that attend all three webinars will have the opportunity to earn a certificate of completion. Registered participants will also receive their choice of a curriculum binder or USB drive of the traditional course by mail.

Webinar 1 - Recording Now Available
Core Grazing Education: Evaluating Resources and Goal Setting, Getting Started Grazing, Soil Fertility

Webinar 2 - Recording Now Available
The Science of Grazing: Understanding Plant Growth, Fencing and Water Systems, Meeting Animal Requirements on Pasture

Wednesday, March 3rd 7 PM Webinar 3:
Meeting Grazing Goals: Pasture Weed Control, Economics of Grazing, Creating and Implementing Grazing Plans

Cost of the course is \$50, which includes the Pastures for Profit manual. Current and new members of the Ohio Forage and Grasslands Council are eligible for a \$10 discount on registration. Register by visiting:

afgc.org/ofgcwebinar

Pesticide & Fertilizer Exam Study Sessions 7-9 PM on the dates listed

Study sessions will be held virtually until further notice. Registration is required - call 740-461-6136 or email lyon.194@osu.edu to request the Zoom link.

Thursday, March 11
Tuesday, March 30
Monday, April 19
Thursday, May 20



For more information on obtaining a pesticide license, visit pested.osu.edu. For fertilizer certification, visit nutrienteducation.osu.edu. You can also contact the Jefferson County Extension office with any questions.

Study materials can be found on these websites. Hard copies of study materials may be in stock at the Jefferson County Extension office - call ahead to check availability.

2021 Agronomy Spring Events

March 4 - Getting Started with IP and Non-GMO Crop Production
8:30-10:30 AM; Register at go.osu.edu/2021specialtygrains

March 4-18 (excluding March 11) - Soil Health Q&A Series
Every Thursday 8AM; Register at go.osu.edu/2021shseries

March 9-12 - 2021 Virtual Conservation Tillage
and Technology Conference Learn more at ctc.osu.edu

March 18 - Water Quality Wednesdays
8:30-11 AM; Register at <https://go.osu.edu/waterqw>

March 18 - Growing Season Weather Outlook and Changing
Climate Patterns 8:30-11 AM; Register at
go.osu.edu/2021agriweather

Ag Tech Tuesdays (10-11AM; Register at go.osu.edu/agtechtues)

For additional information, visit
go.osu.edu/2021agcropsweb



2021 Winter Agricultural Policy & Outlook Meetings

The 2021 Agricultural Policy and Outlook winter meetings, hosted by the College of Food, Agricultural, and Environmental Sciences Department of Agricultural, Environmental, and Development Economics (AEDE) and OSU Extension will offer much-needed industry news and insight to those involved in the agricultural industry during a time marked with so much global uncertainty.

“Food Waste: Trends & Updates”

March 5, 2021, 11:00-Noon EST

Dr. Brian Roe will be the guest speaker. Participants will learn about the economic, environmental and social implications of food waste; the implications of the COVID pandemic on household level food waste; and learn about recent recommendations for reducing food waste among consumers proposed by the National Academy of Sciences.

Register at: go.osu.edu/2021outlookfoodwaste

“Local Food and Direct Marketing”

March 5, 2021, 12:00-1:00 pm EST

Dr. Zoë Plakias will describe the key trends in direct marketing during the COVID-19 pandemic, how they impact businesses and organizations, detail the possible challenges and opportunities for direct marketing post pandemic, and predict the possible impacts for their business or organization post- pandemic.

Register at: go.osu.edu/outlooklocalfood

“Climate and Grain Market Outlook”

March 11, 2021 10:00-11:30 am EST

Aaron Wilson with OSU Extension and the Byrd Polar Climate Center and Ben Brown, previously with AEDE will be hosting a climate and grain market outlook as Ohio producers start to make plans for 2021. Key points for will cover the short-term outlook on Ohio and regional weather, long term season climate trends, grain market analysis, and marketing strategies.

go.osu.edu/21outlookclimategrain3

“Farm Income and Financial Outlook”

March 15, 2021, Noon-1:00 EST

Dr. Ani Katchova will provide the 2021 farm income forecast, the 2021-2031 USDA Baseline projections of farm income, commodity markets, and trade, indicators and their accuracy, and financial stress including ag loan delinquency rates and bankruptcy rates.

Register at: go.osu.edu/outlookfarmincome

The outlooks are free and open to the public. For the complete program information, visit

go.osu.edu/outlook2021.





FARM OFFICE *Live*

Learn the latest in farm management

Farm Office Live returns virtually this winter as an opportunity for you to get the latest outlook and updates on ag law, farm management, ag economics, farm business analysis and other related issues from faculty and educators with the College of Food, Agriculture and Environmental Sciences at The Ohio State University.

Each Farm Office Live will start off with presentations on select ag law and farm management topics from our experts and then we'll open it up for questions from attendees on other topics of interest. Viewers can attend "Farm Office Live" online each month on Wednesday evening or Friday morning, or can catch a recording of each program.

March 10th 7:00 – 8:30 pm

March 12th 10:00 – 11:30 am

April 7th 7:00 – 8:30 pm

April 9th 10:00 – 11:30 am

Topics to be addressed this winter include:

Outlook on Crop Input Costs and Profit Margins

Outlook on Cropland Values and Cash Rents

Outlook on Interest Rates

Tax Issues That May Impact Farm Businesses

Legal trends for 2021

Legislative updates

Farm business management and analysis updates

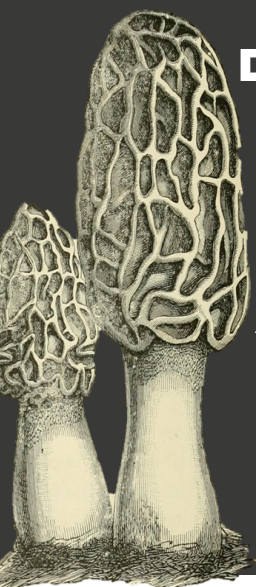
Farm succession & estate planning updates

Who's on the Farm Office Team? Our team features OSU experts ready to help you manage your farm office:

Peggy Kirk Hall -- agricultural law, Dianne Shoemaker -- farm business analysis and dairy production, David Marrison -- farm management, Barry Ward -- farm management and tax

Register at go.osu.edu/farmofficelive

We look forward to you joining us this winter!



Webinar:

Discovering Morels

April 7th, 2021

12-1 PM

Learn about the identification, ecology and diversity of a mushroom favorite. This webinar will dive into the species of morels found in North America (and those you may find in Ohio) as well as a few mushrooms commonly mistaken as members of the *Morchella* genus.

Register at

go.osu.edu/morelmadness2021

Webinar:

Spotted Lanternfly: A New Invasive in Jefferson County

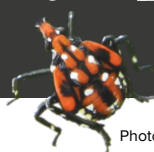
April 15th, 2021

12-1 PM

It's official. Spotted lanternfly (*Lycorma deliculata*) is in Jefferson County. But what does that mean for residents and businesses?

Learn how to identify spotted lanternfly and the protocols implemented to control this invasive insect in Ohio.

Register at **go.osu.edu/2021jeffcoslf**



Photos by Lawrence Barringer, Pennsylvania Department of Agriculture, and Richard Gardner, Bugwood.org



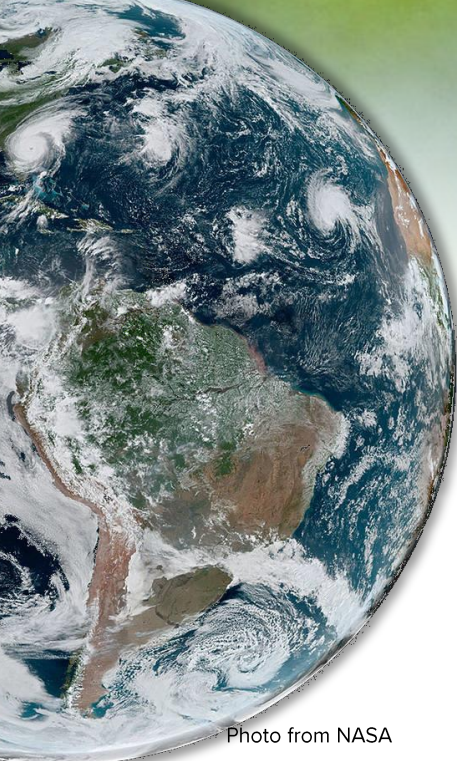


Photo from NASA

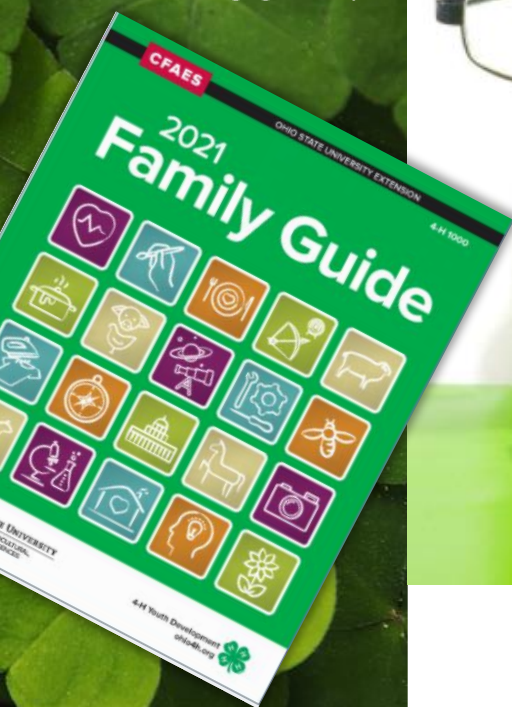
Happy Earth Day from Jefferson County 4-H

Earth Day is April 22 - Let's make 4-H visible throughout the county! Jefferson County 4-H clubs are encouraged to celebrate a community-wide, community service day by recognizing and completing an Earth Day activity! Here are some ideas:

- Plant trees
- Clean up trash
- Restore wildlife habitats
- Rake leaves and clean head stones at a cemetery

Please post your completed project to our county Facebook Page!

**PICK YOUR
PROJECTS FOR
2021!
DOWNLOAD
THE NEW
FAMILY GUIDE:**



ohio4h.org/familyguide

Cooperative Conne



OHIO 4-H VIRTUAL RABBIT SPIN CLUB

**WEDNESDAYS AT 6:30 PM
FEBRUARY 24TH – APRIL 7TH**

Learn directly from breeders about showmanship, nutrition, and their breeds! Open to all youth!



Register at
go.osu.edu/rabbitSPIN

UPDATE – this SPIN club is currently full and registration has closed.
HOWEVER, if you'd like to be placed on a waiting list, please email
moore.3317@osu.edu

If you're going to take a rabbit project this year, you won't want to miss this great learning opportunity!



State 4-H VIRTUAL Horse Communications Contest

The primary objective of the Communications Contest is to provide, in a friendly but competitive setting, an opportunity for youth enrolled in a 4-H horse project to demonstrate their communication and media skills on a specific equine or equine-related topic. Youth may compete in the following categories:

*Public Speaking
Individual Presentation
Team Presentation*



Junior and Senior contests will be held simultaneously via ZOOM on Saturday, March 13th, 2021. Presentation times will be assigned on a random basis and ZOOM meeting links will be sent via email by Monday, March 8th.

Results will be posted on the website by no later than Monday, March 22 and score sheets will be sent directly to participants, including awards. The office will also verify with the county Extension professional that members are in good standing.

Registration for this event must be made online by March 1st, 2021, including payment. No late entries will be accepted for any reason. As this contest determines which contestants will represent Ohio at national contests, ONLY senior 4-H members are allowed to compete in the senior division to comply with national eligibility requirements.

March 13, 2021

Registration Deadline: March 1

Registration Link:

ohio4h.org/events/state-4-h-virtual-horse-communications-contest

Cost: \$10/ youth or \$20/team

Location: Online via Zoom

Local contact:

**Robin Wedlake
740-424-7606**

**Jefferson County Horse Camp is scheduled for June 4-6.
More information will be included in the May-June
newsletter.**

CLUB COMMUNITY SERVICE SPOTLIGHT



Colte Sines of Country Roadrunners donated 200 eggs to the soup kitchen.
#spreadkindness

Cooperative Connection



13

Sub-Committee Meeting Rescheduled

Due to a number of scheduling conflicts (Volunteer Conference, Fairboard meeting, Pesticide Training), the subcommittee meetings scheduled for Feb. 23 will be held March 2 at their regularly scheduled times, IN-PERSON at the Extension Office and on Zoom. If you would like a link to attend via Zoom or intend to be at the meeting in person, you must RSVP by 4 PM, March 1. RSVP to allison.325@osu.edu.

Reminder:

5 PM - Small animal/still project
6 PM - Horse
7 PM - Livestock

Jefferson County Extension

FAIR CODE OF CONDUCT

Remember to fill out the Fair Code Of Conduct and Agricultural Society Release on Facebook!

In addition to 4-H online enrollment, there is a link to the Fair Code of Conduct and the Agricultural Society Release on the county 4-H Facebook page under the announcements section and on the county website. Remember every year these need to be filled out in addition to 4-H enrollment. Be sure to put the date at the end. If you do not have Facebook, please email allison.325@osu.edu to request a paper copy.

JEFFERSON COUNTY 2021 POSSESSION DATES & RULES

Dogs/Horses/Rabbits – June 1

Market Goats, Lambs, Feeder Calves, Market Hogs,
Dairy Beef Feeders – May 1

Possessions of animals: Animals must be cared for by the youth member after a project is weighed-in, tagged in, and/or registered as a project. Animals must be stalled at the exhibitor's residence (as defined by school registration or driver's license). Any other location must be submitted in writing to the Jefferson County Jr. Fair Committee prior to start of project for approval by the committee. During the project year, if circumstances require a change in location and/or possession, the same written permission must be submitted and approved. The stalling location must be within a 30-mile radius of the exhibitor's residence for consideration. Failure to comply with the possession rule will result in the exhibitor being suspended from participating on any level in the Jefferson County Fair for 1 year.

Jefferson County Jr. Fairboard information will be posted on the Jefferson County Fair Official Facebook Page.

Cooperative Connection

2021 SKILLATHON

2021 Skillathon will be online using a new Qualtrics method! This means it should be easier to navigate and the questions come right from the state skillathon test. Skillathon will open April 1. It will close July 2. This is three months to complete the test online! The links will be posted on our County Facebook Page, and the county website on April 1.

Launch your
PARENTING
to new
heights



JOIN YOUR BLAST OFF FLIGHT CREW -

Joseph Maiorano, Chris Kendle and Bridget Britton – as they provide strategies to LAUNCH your parenting skills into a successful future!

During this FREE 3-session virtual workshop, we use *Active Parenting, First Five Years* curriculum to introduce you to tools that may help you to raise responsible, confident children and to navigate through issues that many parents struggle with.

MARCH WORKSHOPS:

9-11 AM March 3, 10, 17
OR

6-8 PM March 22, 23, 24

Future missions to be announced later

COST: FREE

Pre-registration for this workshop is required and space is limited. To register, visit: go.osu.edu/blastoffreg

Complete a three-session series and receive a Walmart gift card reward.

Tentative Jefferson County 4-H Calendar 2021 (Dates Are Subject To Change)

March 3 @ 6 PM: Livestock Quality Assurance Zoom for **Windy Ridge, Golden Horseshoe, Country Roadrunners, Purple Circle**
 March 4 @ 6 PM: - Livestock Quality Assurance for **Warren Ridge Wranglers, Free Spirits, The Dirt Diggers, Dusty Boots, Lucky Leaf**
 March 6 @ 7 PM: MXC Virtual
 March 7: All 4-H window decorating in place
 March 7- 13: Ohio 4-H Week
 March 10: All Iron Chef Competition submissions due
 March 12-14: All Iron Chef Zoom interviews - check your schedule
 March 13: Virtual Horse Communications Contest
 March 18: Iron Chef Competition winners announced
 March 19-21: Ohio Beef Expo
 April 1: Sea Camp commitment forms due to the state
April 1: Tag pick-up in OSUE office begins anytime between 8:30 AM – NOON, Monday & Friday and NOON – 4 PM Wednesday.
April 5-9 from 8 AM – 4:00 PM: 4- H Online Enrollment Assistance Week at the Fort Steuben Mall– Make an appointment by emailing aftanas.2@osu.edu
 April 8-11: Equine Affaire
April 10 from 8 AM-Noon: Tag pick-up at Jefferson County Fairgrounds, Rozsa Pavilion
 April 10-14: National 4-H Conference
 April 10: Virtual Horse Judging And Hippology Contest
April 15: Last day for Jefferson County 4-H online enrollment
 April 15: Ohio State Fair Scholarships Due
April 16 @ 6 PM: Final \$25 Livestock Quality Assurance for Jefferson County via Zoom for those who missed the others. Enrollment will be taken through 4-H online using a credit/debit card to pay the \$25 fee.
April 17 from Noon-4 PM: Final tag pick-up -Jefferson County Fairgrounds, Rozsa Pavilion
 April 19: Ohio Youth Capital Challenge/Food Prize
 April 22: Earth Day – Recommended county-wide club Community Service Project – Choose your project: trash pick-up, recycle, plant trees, clean-up a cemetery, etc.
 April 23-24: Dairy Palooza

May 1 from 8 AM-Noon: Livestock Tag – In
 May 1: Last day to change your projects in 4-H Online! Window closes at 11:59 PM
 May 7-9: State Leadership Camp Counselor Training
 May 15: State 4-H Youth Assistant applications due
 May 28-29: Camp Counselor Training at Camp Piedmont
 May 29-June 1: State Leadership Camp
 June 3-5: Ohio 4-H Camp Tech
 June 4-6: Jefferson County Horse Camp and live horse Skillathon at the Fairgrounds
 June 9 @ 6 PM: Contest Day at the Fairgrounds
 June 9 from 6 PM-8 PM: Live horse Skillathon at the Fairgrounds
 June 9 @ 7:30 PM: Horse Quality Assurance
 June 13-18: Camp Canopy
 June 14: State Horse Bowl
 June 16-19: 4-H Camp Piedmont
 June 19: Horse PAS Show
 June 20: Ohio State Junior Fair livestock entries due
 June 20: Area III Health And Safety Speaking Competition
 June 20: Avian Bowl Registration due
 June 26: 4-H Cloverbot Challenge
 July 1: State Dog Poster entries due
 July 1: Area IV Health And Safety Speaking Contest
 July 2: Skillathon closes
 July 7: Ohio State Fair Horse entries due
 July 10 @ 9 AM: Project Judging Day
 July 12-15: Virtual Leadership Washington Focus
 July 16-19: Ohio Sea Camp
 July 19-23: Ohio 4-H Junior Horse Show
 July 22: TLC State Fair Training
 July 28: The Ohio State Fair Starts
 July 30: State Fair Livestock Judging Contest
 July 31: Jefferson County Poultry/Rabbit tag in 8 AM - NOON
 August 13: Teen Leadership Council applications due
 August 15 – 22: Jefferson County Fair Week

Poultry Hatch Dates for 2021:

Turkey: March 29
Goose: May 24
Duck: June 21
Chicken: June 28

**Find
your spark!**

Ohio 4-H Week
MARCH 7 - 13

Online Enrollment For Jefferson County 4-H Families Available Jan. 15!

Welcome To 4-H Online 2.0

4-HOnline is the official Ohio 4-H Youth Development Program database for enrolled 4-H members and volunteers. This system works as a partnership between the 4-H family, the state office, and our office to manage the 4-H enrollment process and distribute important information to you.

RETURNING Jefferson County 4-H families are to complete their enrollment online for 2021. **DO NOT CREATE A PROFILE!** Extension staff have rolled over your previous profiles. On the entry page, all you need to do is input the family email you used previously. Then click reset password. After creating a new password, if you were enrolled in the past but do not see your profile in 4-H Online, DO NOT CREATE A NEW ONE! Please contact our office at mckee.652@osu.edu, aftanas.2@osu.edu or allison.325@osu.edu and we will activate your profile. Only fill in the areas you know (Including project selection for 2021). We can review submissions when they are complete.

NEW TO 4-H: Families are to contact Leslie Aftanas at aftanas.2@osu.edu or Tracy McKee at mckee.652@osu.edu to receive a new enrollment packet.

Enrollment opens on Jan. 15. If you have troubles enrolling you can contact us to set up an in-office appointment at allison.325@osu.edu. In addition, there will be open office hour assistance specifically for enrollments April 5-9 8 AM – 4 PM at the Fort Steuben Mall.

YOU CAN:

- Access 4-H Online 2.0 at this link v2.4honline.com/#/user/sign-in
- Watch a video to walk you through the steps: youtu.be/Q6tEKXvnFRY

To make it easy on yourself before you begin, please have a head shot photo of your child downloaded onto your computer desktop.

Entry page for returning 4-H Families



Allison.325@osu.edu

Password

Sign in

Don't have an account?

[Reset password?](#)



Instructional video

4-H Club Advisors' Training

If you did not make it to the advisors' training Zoom please complete the training listed to the side. Also, those required to submit fingerprints in 2021, please do so immediately.

OHIO 4-H VOLUNTEER ONLINE TRAINING COURSES

Instructions for accessing Policy 1.50 and New Volunteer Orientation Training Online Canvas Courses due July 1st

Policy 1.50 is for all volunteers. The new volunteer training is only required for new advisors in 2021.

1. Visit the self-registration link below for the required course(s) you need.
 - Activities & Programs with Minor Participants Policy 1.50 Training
 - Ohio 4-H New Volunteer OrientationVisit cfaesosou.catalog.instructure.com to access the course catalog and enroll in each class
2. Fill out the registration form. Name and email addresses are required. It is okay to enter "0" for the phone number and zip code. Enter "NA" for title and company.
3. After filling out the registration form, you will receive two emails from the Canvas Catalog. One email will ask you to complete your registration, the other will confirm your enrollment in your course(s).
4. After creating your account to complete required training, we encourage you to bookmark the login page at scarlet.instructure.com/login/canvas



Junior & Senior Individual Divisions

Awards

- The top 5 individuals in each category in each division will receive ribbons; high scoring individuals will receive a plaque.
- The top 10 individuals overall in each division will receive ribbons; 1st and 2nd high individuals will receive a plaque.

The contest will open on April 1, 2021 at 9 AM (EST) and will close on April 3, 2021 at 9 PM (EST)

To view additional rules and the registration link (deadline March 25), scan the QR code or visit: golinks.ncsu.edu/links/2021-hippology-invitational

The 2021 Invitational Virtual Hippology Contest is open to all youth ages 8-18 that are non-North Carolina residents and/or NC 4-H members.



Equine Affaire
Elevating the Equestrian Experience since 1994™

April 8-11, 2021
VIRTUAL EVENT

Join us online at
www.equineaffaire.com

EDUCATION | SHOPPING | ENTERTAINMENT

Equine AFFAIRE

The banner features a painting of a brown horse on the left and a dark blue background with white and gold text on the right. A small logo of a horse head is in the bottom right corner.

2021 4-H Week Window Decorating

Theme:

#Opportunity4ALL

@OSU Extension Jefferson County 4-H

March 7-13 is Ohio 4-H Week. In Jefferson County 4-H, a business window decorating contest is the way each club promotes the opportunities 4-H has to offer. The COVID regulations at the time of decorating in 2021 have yet to be determined, so county clubs may need to be creative to get the job done. A Zoom planning meeting, with fewer members actually meeting to decorate may be a good idea this year. Please email allison.325@osu.edu if your club will participate so that we can put together a driving route for the judge. Overall, be creative, have fun, and let's get the word out about this amazing program! Windows need to be in place by 5 p.m., Sunday March 7. Teardown can take place after 5 p.m., March 13. Judging times will vary throughout the week. Good luck and have fun!

4-H Week Window Locations

CLUB	HEAD ADVISOR	PLACE
Wildwood Critters	Rob Vein	Oklok-Criss, 4 th St Steubenville (168 North)
Cross Creek Tomahawks	Karen Hill	McDonalds Steubenville
Country Roadrunners	Heather Parker	Prodigal Daughter – 164 North Fourth Street, Steubenville
Sunrise Lads N Lassies	Gretchen Bonecutter	Old Wayne Elem 8526 Cty Hwy 22A Bloomingle
Liberty Guys & Gals	Joyce Wetherell	Crummet Vault Co, 131 Linduff Ave, Steubenville
Country Rangers	Carl/Aimee Glenn	Touch of Elegance Bakery, 100 Mall Dr, Steubenville, OH 43952
Happy Hooves & Fancy Feat.	Erin Ogden	Ogden Performance Auto, 8128 St. Rt. 151, Rayland, OH
Purple Circle	Amanda Wood	Richmond Post Office
Friends & Neighbors	Melissa Zifzal	Burger King, Wintersville
Golden Horseshoe	Carolyn Piergillini	Smithfield Historical Society, Main Street, Smithfield
4-H Varieties	Joelle Bensie	The Birds Nest, Yorkville (across from bank)
Appalachian 4H'ers	Debbie Roth	Toni Moreland State Farm, Toronto, Ohio
The Dirt Diggers	Chrissy Crawford	Wotinis Pizza Place, Smithfield Gas Station
Free Spirits	Erin Best	Dairy Queen, 142 Warren St, Rayland
Windy Ridge	Melissa Griffith	Harrisville Firehall US 250
Town & Country	Cindy Stingle	Tiltonsville Post Office 218 Grandview Ave
Warren Ridge Cooperative Connection	Karen Thomas	Hank's Place in Yorkville

Special Needs Camp at Canter's Cave

July 9-11, 2021

If you would like more information about attending or supporting Special Needs Camp at Canter's Cave 4-H Camp, please contact Michelle Stumbo, Camp Program Director, at 740-691-6010 or stumbo.5@osu.edu.

"4-H is for everyone," but sometimes accessibility issues deny youth with unique abilities the opportunity to attend camp. In Ohio, a statewide 4-H camp is held at Canter's Cave 4-H Camp in Jackson, Ohio for young people who have needs that cannot be accommodated for in a traditional camp and their caregivers. Being a typical kid is what Camp is all about and it is no different for youth with special needs. Our goal is to give Campers a true experience of Camp while meeting their needs and letting them set their own pace for fun and success!

Jefferson County Extension

Virtual Iron Chef 2021

SAY CHEESE....On March 10

Although we can not taste test due to COVID-19, the Iron Chef Competition will still go on... virtually of course!

This year you can be a member of a team or cook solo. You can work with people from your club or from other clubs. Whatever is easiest and acceptable for your family. Your secret ingredient is CHEESE.

To sign up:

CLOVERBUDS – You are asked to make a cheeseball!!! Submit a recipe card and a photo collage including a placemat photo to receive a participation ribbon! No interview needed for Cloverbuds. Cloverbud entries can be sent to aftanas.2@osu.edu. The cost is \$5.

Placings will be posted March 17.

1. Contact your club advisor. Entries will be accepted only by your advisor. There is not a limit on the number of teams per club this year.
2. The fee is \$5 per team. Teams can be from 1 to 5 people. The fee must be received by the OSU Extension office from the head club advisor no later than 4 p.m., March 10. Checks should be made out to 4-H Committee.
3. Determine your category and dish. (Categories are Breakfast, Dinner or Dessert.)
4. TYPE a recipe card, including the equipment needed, ingredients, measurements, method, bake time, servings, etc.
5. Create a **PICTURE COLLAGE** of your team making your dish. For maximum points, the collage should include photos of all teammates working on the dish; preparation from the beginning, middle, and end of the of the experience; the final dish on a decorated table, just as if we were at an in-person competition; and a placemat related to cheese including facts about the product and how it was used in your dish. No more than 20 photos in your collage.
6. Email your photo collage and recipe card to allison.325@osu.edu by 11:59 p.m., March 10.
7. Participate in a judged **ZOOM INTERVIEW** to be scheduled for March 13-14 with a local celebrity judge. Placings will be posted March 17.

Entry Form Must be received by March 10

Send with payment to OSU Extension

500 Market Street, Suite 512, Steubenville, Ohio 43952

Club name:

Team 1

of members _____ Category _____

Names of Members:

Team 2

of members _____ Category _____

Names of Members:

Categories = Breakfast, Dinner or Dessert

All complete entries/submissions with interview count toward honor member status. Occasional Quantity Cooks training not required for the 2021 Competition. Know your safety temperatures for the interview.

Team 3

of members _____ Category _____

Names of Members:

Team 4

of members _____ Category _____

Names of Members:

Rubric:					
CRITERIA	WEIGHT	PROFESSIONAL 25	PRACTITIONER 20	NOVICE 10	BEGINNER 5
Appearance (Plating and placemat)	25%	<input type="checkbox"/> Food Item(s) arranged neatly and with flair, placemat professional <input type="checkbox"/> Imagination and creativity were visible	<input type="checkbox"/> Food item(s) arranged neatly <input type="checkbox"/> Little creativity used Placemat is included	<input type="checkbox"/> Food item(s) placed on plate no placemat or poorly done placemat	<input type="checkbox"/> Little or no planning for plating food no placemat or poorly done placemat
Knowledge	25%	<input type="checkbox"/> Knowledgeable about the ingredient and recipe	<input type="checkbox"/> Knowledgeable about product but not process or vice versa	<input type="checkbox"/> Little knowledge	<input type="checkbox"/> Unable to answer questions
Degree of Difficulty	25%	<input type="checkbox"/> Recipe(s) involved many steps and difficulty level was high	<input type="checkbox"/> Recipe(s) involved many steps but difficulty level was medium	<input type="checkbox"/> Recipe(s) involved a few steps and difficulty level was low	<input type="checkbox"/> Recipe was simple to cook/bake
Use of Secret Ingredient	25%	<input type="checkbox"/> Used secret ingredient and enhances flavor of food item	<input type="checkbox"/> Used secret ingredient but not noticeable	<input type="checkbox"/> Used secret ingredient but overpowers flavor	<input type="checkbox"/> Did not use secret ingredient or is not noticeable



LIVESTOCK TAG PICK-UP

Jefferson County livestock tag pick-up will be held at the following times and locations:

April 1 — Tag pick-up begins at the Extension office BY APPOINTMENT 8:30 AM – NOON Monday and Friday or NOON – 4 PM Wednesday. Email mckee.652@osu.edu.

April 5-9 – 8 AM– 4 PM during 4- H Online Enrollment Assistance Week @ the Fort Steuben Mall. Extension will be set up at the end of the mall near JC Penney.

April 10 – 8 AM - NOON, @ the Jefferson County Fairgrounds, Rozsa Pavilion

April 17 – NOON – 4 PM - Final tag pick-up @ the Jefferson County Fairgrounds, Rozsa Pavilion

POULTRY AND RABBIT TAG-IN DAY JULY 31

Jefferson County Poultry And Rabbit Tag-In Day will be held from 8 a.m. – Noon, Saturday, July 31. This applies to chickens, turkeys, ducks, geese, pet rabbits, and market rabbits

JEFFERSON COUNTY 4-H COMMITTEE SCHOLARSHIP (Sponsored by Jefferson County 4-H Committee)

Background and Purpose:

This scholarship is being established in order to help young people continue their efforts toward becoming self-directing, productive and contributing members of society.

All applications must be received by:
JUNE 11, 2021.

Amount:

Two (2) \$1,000.00 Scholarship award winners will be selected for 2021.

To learn more and to apply, visit
go.osu.edu/2021jeffco4hscholar

LIVESTOCK TAG-IN DAY MAY 1

Jefferson County Tag-In Day will be held from 8 AM – NOON, Saturday, May 1. This applies to market lambs, market goats, hogs, beef feeders, and dairy beef feeders.

Livestock Quality Assurance Dates Still Available

March 3- 6 PM Windy Ridge, Golden Horseshoe, Country Roadrunners, Purple Circle

March 4 – 6 PM - Warren Ridge Wranglers, Free Spirits, The Dirt Diggers, Dusty Boots, Lucky Leaf

April 16 – Final \$25 Livestock Quality Assurance for Jefferson County via zoom for those who missed their other appointment or did not join an alternate club's appointment. You must call 740-264-2212 to receive the link. At this point, NO IN-PERSON Quality Assurance sessions are being planned.

All zoomed out? Complete Quality Assurance Through YQCA



Pigs - Beef Cattle - Dairy Cattle – Sheep - Goats - Market Rabbits - Poultry

Youth for the Quality Care of Animals (YQCA) is a national multi-species quality assurance program for youth ages 8 to 21 with a focus on three core pillars: food safety, animal well-being, and character development.

YQCA certification is being accepted by many livestock shows and fairs that require youth quality assurance certification. View the list here, but always check the entry requirements of each show for complete details.

YQCA is available as an online program for youth everywhere in the United States. YQCA is also offered as an instructor-led training and as a test out certification. Contact the entity requiring your YQCA certification to see which is available in your state or contact info@yqca.org. Learn more about each type of training at yqca.org

Most Outstanding Exhibitor and 4-H'er 2021

Information regarding the application for Most Outstanding Exhibitor and Most Outstanding 4-H'er will be available on the Facebook page in March and in the May-June newsletter.



LESLIE'S CLOVERBUD CORNER



Hello Cloverbuds,

March is the month to celebrate Dr. Seuss's birthday. He would have been 116 years old this year. Dr. Seuss was a political cartoonist, illustrator, poet, film maker, and animator. He was known for his publications of children's books - over 60 of them in all! He sold over 650 million books nationwide, and *Cat in the Hat* was his biggest seller. For this month's activity, I would like each Cloverbud to read as many Dr. Seuss books as you can. Also, color something Dr. Seuss - anything you want to color!

March 17th is the time to celebrate St. Patrick's Day in 2021. Also known as the feast of St. Patrick, this was a cultural and religious celebration for the Patron Saint of Ireland. You can hang some shamrocks in the windows for the month as another activity.

Easter is in April this year, and many people will go to church to celebrate the resurrection of Jesus. Some will stay home and celebrate Easter. Whatever your family is doing, enjoy the family time. April's activity will be hanging eggs on the windows. Last year we did this and drove around looking to see how many we could find. Feel free to do the same this year.

Leslie

We will also be having a Cloverbud meeting on Zoom to meet other Cloverbuds in our county, and we will be playing a game. This meeting is for advisors, parents, and kids who want to attend. Email any questions to me at aftanas.2@osu.edu. The Zoom link will be posted to the county Facebook page, but if you do not have access to Facebook, contact me for the link to connect.

If there is anything you would like to show me during this Zoom meeting that you have finished, I would be happy to send you your earned beads.

Check out the Facebook page for all activities available to Cloverbuds since September.

CLOVERBUD MEETING WILL BE APRIL 14, 2021 AT 6 PM on ZOOM



2021 BUCKEYE FRESH MINI MEAT CUTTING WORKSHOPS

Want to learn more about food animal processing? Ohio State University extension meat specialists are offering a two-day workshop to help the current labor force face challenges brought forth by the 2020 pandemic.

What To Expect: Participants will have a better understanding of anatomy, muscle myology, cutting guidelines, food safety, meat quality, the role of processed meat and government regulated non-meat ingredients (i.e. salt, phosphates, nitrites, etc.) finalized by conducting hands-on cutting tests to understand the impact of yields on profit margins.

Interested? Email:

Dr. Lyda G. Garcia, Extension Meat Specialist, garcia.625@osu.edu

*In order to follow university and state guidelines, personal protective equipment (PPE) and sanitizers will be provided. Additionally, social distancing will be practiced.

*Lunch will be catered. Please note any food allergens during registration.

WORKSHOP DATES

Workshops are Friday and Saturday
8 AM – 5 PM

Choose one of the following dates:

March 26 & 27

April 9 & 10

April 23 & 24

May 7 & 8

May 21 & 22

Who Can Attend: Anyone (18 years of age and older) interested, or currently, working in meat processing plants.

Cost: \$125 (for both days)

Method of Payment: Credit Card

Location: OSU Animal Sciences Building, The Ohio State University Room 111 - Indoor Arena; 2029 Fyffe Court, Columbus, OH 43210

Ohio State University Extension Jefferson County greatly appreciates the support of the Jefferson County Commissioners: Dr. Thomas Graham, Dave Maple, Jr., and Tony Morelli.

Ohio State University Extension embraces human diversity and is committed to ensuring that all research and related educational programs are available to clientele on a nondiscriminatory basis without regard to age, ancestry, color, disability, gender identity or expression, genetic information, HIV/AIDS status, military status, national origin, race, religion, sex, sexual orientation, or veteran status.

This statement is in accordance with United States Civil Rights Laws and the USDA.

