

CFAES

OHIO STATE UNIVERSITY EXTENSION

Jefferson County

Cooperative **CONNECTION**

Covering county news and events for Extension programs, including
Agriculture & Natural Resources and 4-H Youth Development

MARCH-APRIL | 2022

GET READY FOR **IRON CHEF**

THIS ISSUE...

Letter from the Editors.....page 2
Winter Trees.....pages 3-4
The Thriving Farmer.....page 5
Pesticide Information.....page 6
Events.....pages 7-16
Extension's Most
Wanted.....page 11
4-H Information &
Events.....pages 17-29
Leslie's Corner.....pages 24-26
Season Calendar.....page 30

Letter from the Editors



Greetings All!

This winter has thrown us some curve balls in terms of weather – from snow and ice to torrential downpours to temperature fluctuations from the single digits up to the 60s. For climate outlooks, summaries, tools and other weather-related information and resources, check out the State Climate Office of Ohio at <https://climate.osu.edu>.

In case you have not already heard the news, Christina Hought has joined our Extension Team here at the Jefferson County office. Christina is our new Office Associate - She is a great person to get to know and will be working with many of you, and if you call our main office line, she will likely be the first person you will speak with. We are super excited to have her onboard...make sure to stop by and say hello!

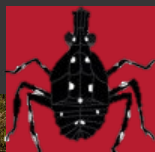
As we get into the spring season, spotted lanternfly nymphs will be out and about. We would like to remind everyone that Jefferson County is currently under a spotted lanternfly (SLF) quarantine. According to the Ohio Department of Agriculture "SLF is now designated a destructive plant pest under Ohio law, which increases inspections and restricts movement of certain items from infested counties in Ohio and other states into non-infested Ohio counties. Individuals traveling from an SLF infested area with items including tree branches, nursery stock, firewood, logs, or other outdoor items that pose a high risk of spreading the pest are asked to complete a self-inspection checklist. Nurseries, arborists, loggers and other commercial activities may need to be covered by a compliance agreement in order to ship certain products out of infested counties. Please call 614-728-6400 for more information about compliance agreements for commercial activities."

In 4-H, the annual Iron Chef competition is in full swing! The Master Gardener Volunteers will also be having a Spring Garden Party and Plant Sale on April 30th – learn more on page 10. If you have any questions regarding our hours, events, projects, etc., give us a call at 740-264-2212. For a summary calendar of events, see the last page. For county Extension updates, stay tuned at jefferson.osu.edu or follow us on Facebook (@JeffCoExtension).

Time to get growing!

ANGIE ALLISON
4-H Youth Development

ERIKA LYON
Agriculture & Natural Resources



Spotted lanternfly nymphs will be emerging soon..Help us spot spotted lanternfly! Contact the Ohio Department of Agriculture at 614-728-6201 or use the Great Lakes Early Detection Network App to report sightings of this insect!



WILL ICE HURT TREES? THE ANSWER IS YES, NO AND MAYBE!

By Thomas DeHaas, OSU Extension, Erie County

On February 17, our weather went from 50 degrees Fahrenheit down to 30 degrees F and rain which began turning to ice. It made me ask myself this morning as I walked out to ice-coated trees: "Will Ice Hurt Trees?"

A thin coating of ice in the middle of winter will typically have no ill effects on trees. In fact, long periods of ice coating fruit trees is thought to reduce mite and insect populations by suffocating the eggs that were laid last fall. In some cases, ice will protect tender fruit buds.

So, the first answer is "No".



As ice loads increase, especially on evergreens, branches can begin to break. Heavy snow or ice after trees begin to leaf out like we experienced last spring can cause branches to break. This can be especially dangerous if the tree has internal rot.

So, the answer is "Yes".

So why did I say Maybe??

Because in the case of ice and snow, the variables of duration and amount of snow or ice will determine the amount of damage. This is particularly true when an ice storm will down power lines.

If you're not sure your tree can withstand a heavy ice load, especially if it is growing near power lines, refer to the next article...

One thing is for sure, Ice coated trees are beautiful. Enjoy!



Your browser can't play this video.

[Learn more](#)

The video was provided as a courtesy by Pennline Tree Service. Video not working? View at <https://youtu.be/oQ8uazvf3Og>

TREES & POWERLINES – HOW CLOSE IS TOO CLOSE?

By Thomas DeHaas, OSU Extension, Erie County

The Ohio Tree Care Conference, sponsored by the Ohio International Society of Arboriculture (ISA) was held in Cleveland, Ohio on February 8-10, 2022. At the conference, I saw a presentation on trimming trees and power lines by Joe Jimmo from Pennline Tree Service.

I got to thinking how many homeowners try to trim trees close to power lines. Maybe to save money? The homeowner may feel they have the experience to tackle the job. And they own a chainsaw!

The point of the presentation is this: "Power lines are dangerous AND they can kill you!"

To the right are charts of how close an ARBORIST with EXPERIENCE safely trim trees in proximity of lines can based on voltage.

The take home message is : "If you have any doubt, CALL an International Society of Arboriculture Utility Specialist:

<https://www.isa-arbor.com/certification/index>

Above is a video the presenter showed during his presentation:

On August 23, 1985, a tree trimmer dropped a limb on a 34KV line owned by Baltimore Gas and Electric Company. The scenes in the video are from the resulting fault.



Cooperative Connection

Table 1. Minimum approach distances to energized conductors for arborists not qualified by training and experience to work within 10 feet (3.05 m) of electrical conductors.

Nominal Voltage (Phase-to-Phase)*	Minimum Approach Distance (MAD)	
	ft-in	m
kV		
50.0 and less	10-00	3.048
50.1 to 72.5	11-00	3.353
72.6 to 121.0	12-08	4.064
138.0 to 145.0	13-04	4.267
161.0 to 169.0	14-00	5.080
230.0 to 242.0	16-08	6.299
345.0 to 362.0	20-08	8.128
500.0 to 550.0	26-08	10.668
785.0 to 800.0	35-00	

*Exceeds phase-to-ground per 29 CFR 1910.333.

Table 2. Approach distances for incidental line clearance-alternating current.

Voltage Range (Phase-to-Phase)*	Minimum Approach Distance (MAD)	
	ft-in	m
kV		
0.300 and less	Avoid contact	Avoid contact
0.301 to 0.750	1-06	0.457
0.751 to 5.0	2-09	0.838
5.1 to 15.0	2-10	0.864
15.1 to 36.0	3-01	1.016
36.1 to 46.0	3-04	1.118
46.1 to 72.5	3-08	1.321
72.6 to 121.0	4-04	3.861
138.0 to 145.0	12-08	4.064
161.0 to 169.0	13-04	4.268
230.0 to 242.0	14-00	5.080
345.0 to 362.0	16-08	6.300
500.0 to 550.0	20-08	8.128
785.0 to 800.0	26-08	10.668
	35-00	

*Exceeds Table S-5 29 CFR 1910.333

Table 3. Minimum approach distances (MAD) from energized conductors for qualified line-clearance arborists and qualified line-clearance arborists trainees.

Voltage Range (Phase-to-Phase)	Altitude Correction Factor Sea Level to 5,000 ft. (0-1,524 m)		Altitude Correction Factor 5,000 to 10,000 ft. (1,524-3,048 m)		Altitude Correction Factor 10,000 to 14,000 ft. (3,048-4,267 m)	
	ft-in	m	ft-in	m	ft-in	m
kV						
0.050 to 0.300	Avoid contact	Avoid contact	Avoid contact	Avoid contact	Avoid contact	Avoid contact
0.301 to 0.750	1-02	0.356	1-04	0.407	1-06	0.458
0.751 to 5.0	2-03	0.686	2-06	0.762	2-09	0.839
5.1 to 15.0	2-08	0.686	2-07	0.788	2-10	0.864
15.1 to 36.0	2-11	0.813	3-01	0.940	3-04	1.016
36.1 to 46.0	3-06	0.889	3-04	1.016	3-08	1.118
46.1 to 72.5	3-11	1.067	4-00	1.220	4-04	1.321
72.6 to 121.0	4-06	1.194	4-06	1.372	4-10	1.474
121.1 to 145.0	5-01	1.372	5-02	1.575	5-07	1.702
145.1 to 169.0	7-00	1.550	5-09	1.753	6-03	1.905
169.1 to 242.0	11-09	2.134	7-11	2.413	8-07	2.617
242.1 to 362.0	14-08	3.582	13-06	4.115	14-07	5.338
362.1 to 420.0	17-06	4.471	16-09	5.106	18-02	6.604
420.1 to 550.0	23-09	5.334	20-00	6.096	21-08	8.967
550.1 to 800.0		7.239	27-02	8.281	29-05	

*From 29 CFR 1910.269 Tables R-6, R-7 altitude corrected (R-5) for 1,500 m, 3,000 m, & 4,200 m.



THE THRIVING FARMER

information to help farmers and their families
make healthful choices

WHAT'S GOOD FOR THE FARM IS GOOD FOR THE FARMER

by Joseph Maiorano, PhD., Family and Consumer Sciences, OSU Extension, Harrison County

The Farm

I think that if I nosed around your desk, I might find either calendar entries or sticky notes reminding you to do or schedule routine maintenance on your farm equipment. Preventive maintenance, which includes inspection, cleaning, and adjustment, helps discover and perhaps prevents potential problems. Moreover, preventive maintenance, compared to repairs or replacement, typically requires less resources, such as time and money.

The Farmer

If I continued to nose around, would I find any notes reminding you to schedule routine maintenance, or an annual exam, on yourself? Annual physical examinations usually last about forty minutes, during which you and your primary care provider will review your medical history, check on your vital signs such as blood pressure, heart rate, temperature, respiratory rate and weight (Tolliver, 2021). In addition, your physician may check your general appearance and your head, eyes, ears, nose and throat; listen to your heart and lungs; feel your abdomen; review diet and bowel movements; look for suspicious lesions on the skin; assess movement and sensation; and ask about your mental health. Your physician might draw blood to test, or perhaps give you an order to have blood drawn and tested at another facility, such as a hospital.

Vaccinations Review

During your annual checkup, your physician will review vaccinations, including those you have received and those that are due. Some physicians might suggest that you get the annual influenza vaccination and the COVID-19 vaccine or booster.

Levels of Prevention

Annual checkups are a primary care. The goal is to discover any signs that might suggest pre-disease. For example, elevated blood sugars might suggest pre-diabetes, and high blood pressure might signal developing hypertension. Checkups can also be secondary care--the goal is to help prevent pre-disease from getting worse. Tertiary, or a third level of care is the treatment and

monitoring of a disease that you have been diagnosed with. A goal of tertiary care is to help prevent disease from worsening.

Physical examinations may help you to prevent disease and promote a more healthful life. Schedule an annual medical checkup to help you prevent the onset, growth, or development of disease.

References:

Tolliver, S. (2021). Don't zoom by your annual checkup. Downloaded on November 12, 2021, from, <https://wexnermedical.osu.edu/blog/dont-zoom-by-your-annual-checkup>

Photo: Skicka911. (n. d). Downloaded from, <https://pixabay.com/photos/oil-changing-the-oil-maintenance-3979023/>

Joseph works for Ohio State University Extension, Harrison County. Joseph and his wife, Mary, live in Steubenville, Ohio. They have four sons, including two who live at home.

Pesticide & Fertilizer Exam Study Session

March 17
5:30- 7:00pm

Study session will be held at the **Barnesville Farm Bureau** building. Registration is required- call 740-695-1455 or email lima.19@osu.edu.

For more information on obtaining a pesticide license, visit pested.osu.edu. For fertilizer certification, visit nutrienteducation.osu.edu. You can also contact the Jefferson County Extension office with any questions.

Study materials can be found on these websites. Hard copies of study materials may be in stock at the Jefferson County Extension office - call ahead to check availability.



PESTICIDE EXAM INFORMATION

The 2022 pesticide & fertilizer exam schedule is now available at go.osu.edu/pesticideexam!

Visit the registration link to view scheduling and locations available.

Exams are scheduled for the following dates in Jefferson, Belmont, and Harrison Counties March through April:

March 17 9AM-1PM

Jefferson County Towers Building/
OSU Extension, 2nd Floor
Conference Room, 500 Market
Street, Steubenville, OH

March 24 10AM-2PM

Belmont Farm Bureau Building,
100 Colonial Drive, Barnesville, OH

April 19 9AM-1PM

Harrison County Fairgrounds,
550 Grant Street, Cadiz, OH

Photo IDs will be required.

Pencils and calculators will be provided.

Per OAC 901:5-11-08(A)(7), applicants must wait five (5) business days between testing sessions.

Multiple exams may be taken during a session, however, due to limited space, you may only register for one session per week.

Register for exams at pested.osu.edu/PrivateApplicator/testing

FERTILIZER CERTIFICATION

THURSDAY MARCH 31ST
9AM-12:30PM

This three hour initial fertilizer training webinar will meet the requirements for Ohio's Fertilizer Certification Law. Those who apply fertilizer to 50 acres or more grown primarily for sale are required to become certified.

Details and registration information available at
nutrienteducation.osu.edu/OnlineFertCert



*Stay up-to-date with the latest findings at the C. Wayne Ellett Plant & Pest Diagnostic Lab by checking out the new **Weekly Plant Disease & Pest Diagnostic Clinic Sample Summary***

- available at bygl.osu.edu



March 23rd | 10-11:30

Emerging Technology in Water Quality
Description: A look into existing and potential water quality projects utilizing drones, GIS, and much more.

Register at

go.osu.edu/WQW

Please direct any questions to
moneymaker.4@osu.edu

CCA and CLM credits
will be available.

February 2nd



*Food Prices
and Inflation*

February 16th



*Commodity
Markets*

March 9th



*International
Trade*

Economic Outlook and Policy Webinar Series

Noon - 1 p.m.

Register: go.osu.edu/AEDE-Series

April 6th



*Economy
and Inflation*

May 4th



*Labor
Markets*

June 1st



*Energy and
Carbon Prices*

2022 Soil Health Webinar Series

RECORDINGS AVAILABLE:

<https://www.youtube.com/c/OSUAgroCrops/videos>

OHIO SPECIALTY CROP PARTNERS

VIRTUAL LISTENING SESSION

March 25, 2022

9:30-11AM



Join in quality conversation about CFAES research and Extension support for Ohio Specialty Crops Partners. CFAES will provide updates on our priorities, existing support for specialty crops, and actions we are taking related to research and education for specialty crops. We will also take time to explore emerging trends for specialty crops agriculture in the state and listen to the industry needs and how CFAES plays a role in the industry. Please REGISTER no later than March 24, 2022 at

<https://go.osu.edu/2022speccropreg>



Jefferson & Harrison **MASTER GARDENER VOLUNTEERS**



The Jefferson & Harrison Master Gardener Volunteer training consists of both online modules, hands-on labs and tours, and either a writing or presentation project. Interns are expected to attend an orientation session and a minimum of 5 labs but can pick and choose either by topic or date that best fits into their schedule. Labs run monthly from March through September. Modules must be completed within 6 months and lab requirements must be completed within a year from date of application. Cost of the training is \$100 per person and includes the online course and labs/tours. Classes are open year-round - apply at any time! Send questions to Erika Lyon at lyon.194@osu.edu or call 740-461-6136.

Master Gardener Volunteers in Ohio offer assistance with home horticultural questions, pest identification, school programs, demonstrations, research, and continuing education programs. Working with county Ohio State Extension personnel, Master Gardener Volunteers provide educational services to their communities. If you are a garden enthusiast, this is a great opportunity to share your gardening know-how and skills with others in your community.

To learn more about the application process, visit go.osu.edu/becomejeffharrmgv.



Interested in gardening but not necessarily in becoming a volunteer? This year, the labs and tours will be open to the general public. Cost to attend is \$15/person/session. Call 740-461-6136 for more information.

2022 LAB/TOUR SCHEDULE*

Wednesday, March 2nd	Fruit Tree Pruning
Tuesday, April 26th	Landscape Design 101
Monday, May 9th	Arboretum Tour
Wednesday, June 1st	Plant Propagation
Monday, July 11th	Pollinators Trail
Thursday, August 4th	Fruit & Nut Production Basics
Thursday, September 1st	Plant Diagnostics & Disease/Pest Management

*Schedule subject to change.

Time of day and event location will be released one month prior to each lab/tour.

Training Topics

basic botany
soils, fertilizer and compost
entomology
plant pathology
integrated pest management
plant propagation and houseplants
lawn care
home herb, vegetable and fruit production
backyard wildlife management
pollinators

SPRING GARDEN PARTY & Plant Sale

SATURDAY, APRIL 30, 2022

Scio Branch Library Lower Level, 331 W Main St, Scio, OH

Hosted by the JEFFERSON & HARRISON MASTER GARDENER VOLUNTEERS

Join the Jefferson & Harrison Master Gardener Volunteers to learn about gardening for indoor and outdoor locations during the growing season and pick up plants from the plant sale! From Bonsai techniques to creating private garden nooks, participants will enjoy hands-on learning and get to take home a craft and variety of plants.

Register at
go.osu.edu/mgvgardenparty22
or call 740-264-2212

Presentations start at 9AM

Topic Lineup:

Gardening with Tropical - Looking Plants *with Michael Hauber*
Make-and-Take Garden Gnomes *with Marianne O'Donnell*
Herbs for Your Garden *with Barbara Dewey*
Growing African Violets *with Barbara Dewey*
Bonsai Using Houseplants *with Rita Mullet*
Garden Topiary Designing *with Laura Alexander*
Creating a Private Garden Get-Away Nook *with Laura Alexander*

Sponsors:



THE OHIO STATE UNIVERSITY

EXTENSION

Cooperative Connection

Plant Sale

Opens at 9AM, available until 2PM or until sold out. Plants include a variety of houseplants, herbs, cannas bulbs, zinnias, marigolds, ornamental grasses, hostas, dahlias, African violets, lambs ear, ajuga, lantana and more!

Garden Party

Registration: \$40 per person to cover speaker fees, craft supplies and handouts.

Space is limited, and pre-registration is required - register by April 18th at 5PM. Make checks out to OSU Extension and mail registrations to: OSU Extension Jefferson County, Jefferson & Harrison Master Gardener Volunteers, 500 Market Street, Suite 512, Steubenville, OH 43952.

Complimentary coffee, tea, and morning snacks provided along with lunch. Stop by the yard sale table to purchase garden tools, gloves and more.

[JEFFERSON.OSU.EDU](https://jefferson.osu.edu) | [HARRISON.OSU.EDU](https://harrison.osu.edu)

CFAES provides research and related educational programs to clientele on a nondiscriminatory basis. For more information, visit cfaesdiversity.osu.edu. For an accessible format of this publication, visit cfaes.osu.edu/accessibility.

Jefferson County Extension

BLACK LEGGED (DEER) TICK

EXTENSION'S MOST WANTED



It seems that we've spent a lot of time lately discussing the new invasive tick to Ohio, the Asian longhorned tick. But let's not forget about the ticks that we have dealt with for many years, particularly the black-legged tick.

Black-legged ticks, also known as BLTs or deer ticks, are a significant threat to human and animal (whether companion, livestock or wildlife) health here in Ohio and are most well-known for being the only vector of Lyme disease. However, they can also spread anaplasmosis and babesiosis, sometimes vectoring multiple diseases at a time.

Size-wise, these ticks are tiny even by tick standards. I found a nymph on myself early last year that was about the size of the tip of a ballpoint pen, which made it incredibly difficult to find and remove. The larval stage of the tick is smaller and even somewhat transparent, making it easy to elude detection.

A common myth about deer ticks is that they are only active during the spring, summer and fall months. However, this is not the case.

One or more stages of development may occur anytime of the year, even in the winter months!

Prevention of ticks is critical in mitigating the spread of tick-borne diseases. Use tick repellents such as DEET and permethrin is an option when planning to be outdoors. Make sure to read all label instructions and note that permethrin-based products should only be applied to clothing and not directly to skin. Light colored clothing makes spotting ticks much easier, and wearing long sleeves and tucking pants into socks minimizes risk of getting bit. Treat pets and livestock with the appropriate anti-tick products (make sure the species is listed on the product label!) Keep in mind there is now a Lyme disease vaccine for dogs!

Have a tick that you want identified? Feel free to drop off specimens at the Extension office for ID, but make sure they are in one piece. Unfortunately, we can't identify ticks and friends when they are smooshed or in fragments.

LANDSCAPE DESIGN 101

Monday, April 26th, 3-6PM

Description: Learn about the basics of planning your landscape. This session will cover topics such as selecting the right plant for the right place, site drainage, soil testing, color selection, considerations for texture and size of plants, and creating "rooms" in your own backyard. Participants should plan to bring photos and aerial maps for the hands-on 'design-your-own-landscape' activity.

Cost: \$15/person, registration fee waived for Jefferson Harrison Master Gardener Volunteer Interns. This class will count as one lab session as part of the Master Gardener Volunteer training. Call 740-264-2212 to register.



A DAY *in the* WOODS

We've still got details to work out,
but this is what we've got in store
for A DAY in the WOODS, 2nd
Friday Series for 2022:

- ▶ March 11- Native grasslands and Pollinator Habitat for Wildlife- A virtual Introduction. 3 pm. via Zoom
- ▶ April 8 – Using Technology for Woodland Management. 10 am. Join us via Zoom or in person at Zaleski ODNR Complex. 12:30 PM Live Demonstrations at Zaleski ODNR Complex (not available via Zoom)
- ▶ May 13- Understory plants in Your Woodland. 9 am. Vinton Furnace State Forest
- ▶ June 10- Woodlands and water. 9 am. Zaleski State Forest. 2:30 pm optional float trip on Raccoon Creek
- ▶ July 15- Tools and Equipment for managing your woodlands and wildlife habitat. 10 am. Hocking College
- ▶ July 22- Native grasslands and Pollinator Habitat for Wildlife. 9 am. Field-based. Location to be determined.
- ▶ August 12- Tree Identification. 9am. Vinton Furnace State Forest
- ▶ September 9- A night in the forest: Nocturnal Wildlife and Night Skies. 6:30 pm. Vinton Furnace State Forest
- ▶ October 7- Managing oaks for wildlife. 9 am. Vinton Furnace State Forest
- ▶ November 10 (Thursday)- Family Forests and Carbon. 3 pm. Virtual via zoom
- ▶ Hands on Chainsaw Training (CSAW). 8 Hour Hands on Classes. Dates, Locations TBA.

Visit u.osu.edu/apsley.1 for more information.



Beef Quality Assurance Certification

**TUESDAY, May 10th,
7 – 8:30 P.M.**

Harrison County Fairgrounds
Commercial Building
550 Grant Street, Cadiz, OH 43907

**Pre-registration required. Register by
calling 740-461-6136.**

Can't make it to this training? Visit www.bqa.org to get BQA certified online. Online training consists of series of lessons and quizzes to become certified. Training will take ~2 hours.

Pastures for Profit

Online Course & Webinar Series

The virtual Pastures for Profit course will consist of three 90-minute webinars offering a variety of pasture and grazing topics. Once registered, attendees will be granted access to the online course including the webinars and complementary resources. Participants that attend all three webinars will have the opportunity to earn a certificate of completion. Registered participants will also receive a USB drive of the traditional course by mail.

**Thursday, March 31st 7PM
Core Grazing Education**

**Thursday, April 7th 7PM
The Science of Grazing**

**Thursday, April 14th 7PM
Meeting Grazing Goals**

Cost of the course is \$50, which includes the Pastures for Profit manual. Call 740-461-6136 for more information.

Register at

<https://cfaesosou.catalog.instructure.com/courses/pastures-for-profit-h7-01cd-52s-v63>

Cooperative Connection

Forages for Horses



ONLINE COURSE & Webinar Series

The virtual Forages for Horses course will consist of three 90-minute webinars offering a variety of pasture and management topics. Once registered, attendees will be granted access to the online course including the webinars and complementary resources. Participants that attend all three webinars will have the opportunity to earn a certificate of completion. Registered participants will also receive a USB drive of the traditional course by mail.

Live Webinar:

Thursday, March 17th 7:00 PM

Pasture and Weed Management, Soil Fertility, and Species Selection

Previous webinars recorded and posted to course include hay analysis, feeding the different classes of horses, basics of equine nutrition and parasites.

Cost of the course is \$75 which includes a digital copy of the Forages for Horses Manual. A physical copy may be requested for an additional price. Current and new members of the Ohio Forages and Grasslands Council are eligible for a \$15 discount on registration.

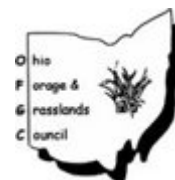
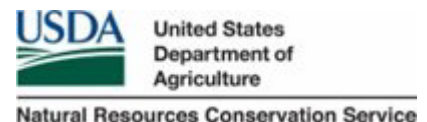


Register at

go.osu.edu/foragesforhorsesregistration

or scan the QR code on left

This
program is
hosted by:



2022 Cattle Management School

Join OSU Extension 7pm – 9pm (*except for where otherwise noted) for these exciting sessions that cover topics from tick-borne and needle transferred diseases to the science of good grilling.

ZOOM SESSION

Tuesday, March 22nd

Forage Genetics: Advanced Level

Guest Speaker: Dr. Timothy Phillips,
Associate Professor - University of Kentucky
Department of Plant & Soil Sciences
Zoom - register at go.osu.edu/cms3

IN-PERSON SESSION

Tuesday, April 5th, *5-9pm

Grill Smart (Hands-on session using grills!)

Guest Speaker: Garth Ruff, Beef Specialist –
Ohio State University Extension
*This session is in-person only
PRE-REGISTRATION REQUIRED
Cost \$20/person to cover materials including
grilling supplies
Payment due at registration
Payments will NOT be accepted at the door
SPACE LIMITED TO 20
Location TBA, Rayland, OH
Register by calling 740-461-6136 or email
lyon.194@osu.edu



Miss a session? Watch the webinar recordings here!

Your browser can't play this video.
[Learn more](#)



*Ticks & Bloodborne Pathogens of
Cattle*

Video not working? Watch at
<https://youtu.be/kZ694T2OmSE>

Your browser can't play this video.
[Learn more](#)



*Apps for Producers: Deciding What
Works Best for You*

Video not working? Watch at
<https://youtu.be/-ZTnqP7sVtc>

2022 OSU Beef Team Virtual Beef School • Monday Evenings 6:00p.m.

January 24

Beef Markets and Outlook

Dr. Andrew Griffith,
University of Tennessee
Extension Livestock Economist

February 21

Weather Impacts on Beef Production

Climate and Livestock
Dr. Aaron Wilson, OSU Extension Climatologist
Mud Impacts on Cow-Calf Performance
Kirsten Nickles, PhD Candidate, OSU Animal Sciences

March 21

Herd Health Management and Update

Dr. Justin Kieffer DVM
OSU Animal Sciences

April 11

Beef Team Live Roundtable

Ask Questions and Discuss Answers with
OSU Extension Beef Team Members

Register at: go.osu.edu/beefschool22

Details about all winter beef programs at beef.osu.edu

One Registration Link for all 4 Sessions - Contact: Garth Ruff, ruff.72@osu.edu



THE OHIO STATE UNIVERSITY

COLLEGE OF FOOD, AGRICULTURAL,
AND ENVIRONMENTAL SCIENCES

EAST OHIO WOMEN IN AGRICULTURE CONFERENCE

MARCH 25, 2022

FRIDAY / 9AM-3:30PM

Who Should Attend:

Women and Young Women (high school age) who are interested, involved, or want to become involved in food, agriculture, natural resources, or small business.

This one-day conference is a great place to learn, share and network. Be surrounded by other women who are facing the same day-to-day ups, downs, adventures and dilemmas as you.

Register online at go.osu.edu/eowia2022

\$55 ADULTS | \$30 STUDENTS

Registration Deadline: March 11

For more information call 330-264-8722

NEW LOCATION:

Ohio FFA Camp Muskingum

3266 Dyewood Rd SW, Carrollton, OH 44615

<https://ffacamp.com/>



FARM OFFICE *Live*

Learn the latest in farm management

Farm Office Live returns virtually this winter as an opportunity for you to get the latest outlook and updates on ag law, farm management, ag economics, farm business analysis and other related issues from faculty and educators with the College of Food, Agriculture and Environmental Sciences at The Ohio State University.

Farm Office Live provides the latest outlook and updates on ag law, farm management, ag economics, farm business analysis and other issues dealt with in your farm office. Targeted to farmers and agri-business stakeholders, our specialists digest the latest news and information and present it in an easy-to-understand format.

Each Farm Office Live will start off with presentations from our experts and then we'll open it up for questions from attendees on other topics of interest. Viewers can attend "Farm Office Live" online each month on Wednesday evening or Friday morning, or can catch a recording of each program.

Who's on the Farm Office Team? Our team features OSU experts ready to help you manage your farm office:

Peggy Kirk Hall -- agricultural law,
Dianne Shoemaker -- farm business analysis and dairy production,
David Marrison -- farm management,
Barry Ward -- farm management and tax

Register at go.osu.edu/farmofficelive
We look forward to you joining us this winter!

MARCH-MAY SCHEDULE:

March 16	7:00 - 8:30 pm
March 18	10:00 - 11:30 am
April 20	7:00 - 8:30 pm
May 18	7:00 - 8:30 pm



SPOTTED LANTERNFLY MANAGEMENT WORKSHOPS

Join us to learn more about identifying, monitoring, and managing the newly invasive Spotted Lanternfly. Two sessions each day will be provided to cater towards commercial growers and homeowners. Please select your preferred session and location in the registration link. Commercial growers will receive Pest Ed recertification credits for attendance.

APRIL 11

COMMERCIAL GROWERS 2:30 - 4:30 PM | GENERAL PUBLIC 5 - 7 PM

Location: Hancock County Extension Center, Findlay, OH

Register at go.osu.edu/22slfworkshops

Cost: Free to attend

Contact information:
Maria Smith
(smith.12720@osu.edu)
or Amy Stone
(stone.91@osu.edu)



Spring into Action

from Jefferson County 4-H



**CLICK HERE TO VIEW THE
2022 JEFFERSON COUNTY 4-H
CALENDAR**

Hello!

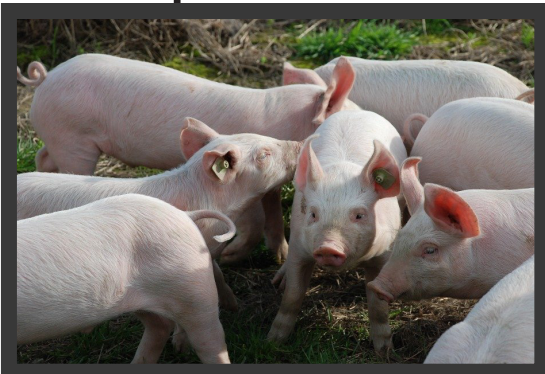
We are gearing up for an eventful and amazing year here in the OSU 4-H Extension office! I am very excited to be a part of this amazing team and look forward to meeting and working with each one of our families! As an alumni member and current 4-H parent, I am fortunate to be able to contribute to and encourage others to participate in the educational and social experiences that only 4-H Youth

Christina Haught

2022 Jefferson County Fair Code of Conduct

The Jefferson County Fair Code of Conduct and the Agricultural Society Release Form is now available to complete with the link being provided on the OSU Extension – Jefferson County 4-H Facebook Page. These Forms are due **June 1** and are required to be read and signed by all youth/guardians who plan to exhibit at the Jefferson County Fair in 2022.

Ohio Spot Breeders Donor Gilt Scholarship Program



The Ohio Donor Spot Program is a group that promotes the advancement of the breed, and will give up to five 4-H or FFA members a Spotted Gilt per year. To apply for a free hog, see the application link on Facebook at Ohio Donor Spot Program or email ohiodonorspotgilt@gmail.com for a copy of the information letter and application. **Applications are due April 1st.**

EARTH DAY COMMUNITY SERVICE OPPORTUNITY

You can help 4-H celebrate Earth Day with the Ohio Department of Natural Resources! 4-H'ers and clubs are invited to present a program or demonstration **during the weekend of April 22-24 at selected Ohio State Parks**. It's a great way to complete leadership activities in natural resources projects or share your earth-friendly activity! Selected programs will be recognized this summer at the Ohio State Fair at the ODNR Park. Find all the details [here](#) and **apply by March 14.**



April 8 - 6 pm Last free QA, in person, Jefferson County Fairgrounds Kitchen. Pre-registration required at allison.325@osu.edu.

April 18 - 7 pm \$25 last chance, in-person Livestock Quality Assurance, Jefferson County Fairgrounds kitchen. Pre-registration required at allison.325@osu.edu.

For youth taking the online [YQCA](#), screenshot the certificate once completed and send to allison.325@osu.edu

MO4-H'er 2022

So you want to be MO4-H'er 2022... here is what you need to know!

- There are two categories. These are based on age in 4-H years, or as of January 1:
junior (ages 9 – 13)
senior (ages 14-18.)
- A 4-H member must have completed the previous year in 4-H having been named a gold member in order to compete.
- You must download a 2022 Ohio 4-H Achievement Record from ohio4h.org/awardsandscholarships
- Fill the form out in detail. It must be typed. Go back at least three years while inputting information.
- Participate in a judged competition at either Contest Day or Project Judging Day.
- By 4 PM, September 15th, you must turn in an updated achievement form complete with your 2022 accomplishments to the OSU Extension office. This form must be USPS mailed or delivered by hand. No emailed or faxed forms will be accepted. If you are using regular mail, please allow time for your form to be received.
- Attend and participate in an interview the evening of Oct. 3 at the OSU Extension Office, 500 Market Street, Suite 512, Steubenville. Interview times will be assigned the week of Sept 20. No interview will start before 4:30 PM. All interviews must be in person and on the date scheduled.
- Attend the 4-H annual meeting and banquet (date TBA) to be recognized for your effort. Award winners will be announced at this event.



Most Outstanding Exhibitor Guidelines 2022

MOE 2022 process, scoring and rules

1. Declare participation by turning in a current 2022 Ohio 4-H Achievement Form and cover letter stating the species for which you are applying to the OSU Extension by 4 PM, May 1. Form must be received by this time. Only hard copies will be accepted. No email, faxes, etc. If you are mailing the form via United States Postal Service, please allow time for it to be received in the OSUE office by this date.
2. Review the following scoring guidelines for MOE Contact allison.325@osu.edu if anything is unclear.

A. Clinic 50 Points

Must be a Jefferson Co. event. These will be held in May. Preregistration will be required in April. Participant receives total points if they attend for the entire county clinic. A MOE contestant can receive half points for leaving early or attending a different outside of county event. If a Jefferson County event is not offered for the specie in which the participant is competing, the participant may only then look for an out of county or virtual event with the expectation of receiving full credit.

B. Ohio 4-H Achievement Form 50 Points

50 Points for a complete achievement form that follows all guidelines sent down by Ohio 4-H. Points will be subtracted for incomplete or sparse areas in comparison to other contestants.

C. Skillathon 100 Points

Actual score up to 100 pts, participant receives the points they earned in the Skillathon.

D. Contest Day Species Achievement Interview 100 Points

1st. place interview will receive 100 Points, 2nd = 90 Points, 3rd = 80 Points, etc.

E. Showmanship 100 Points

1st. place in class will receive 100 Points, 2nd = 90 Points, 3rd = 80 Points, etc. Note: Automatic qualifiers for Supreme Showmanship receive 100 Points

F. Supreme Showmanship 10 Points

1st. Place in class will receive 10 Points, 2nd = 8 Points, 3rd = 6 Points, 4th = 4 Points, & 5th = 2 Points

G. Books 50 Points

50 Points for complete book, Book reviewers can choose to take points off for incomplete books. It is recommended that you include all pictures, feed tags, charts, etc. A MOE contestant should not turn in incomplete books with the expectation of winning. Final reviewers can choose to not award an MOE in a certain category if no contestant has turned in a completed book.

H. Tie Breaker - Highest Showmanship & Supreme Showmanship score, followed by Skillathon score, followed by Interview score

3. Turn in your completed project book at the start of the 4-H awards ceremony. This ceremony is held on the Sunday at the start of the Jefferson County Fair. There will be a box at the gazebo for all project books. Books will be turned over to the MOE review committee directly following the conclusion of the 4-H awards ceremony.
4. Be at the show arena 15 minutes before the start of the junior fair livestock auction on Saturday of the Jefferson County Fair. You will be congratulated on being a participant and awardees will be announced.
5. Good luck! Have fun! Demonstrate your good sportsmanship!

2022 Ohio Youth Skillathons

The Ohio State University Extension and The Ohio State University Department of Animal Sciences are pleased to offer **BOTH** in-person AND virtual Skillathons again for 2022!

Our 4-H Animal Sciences team will conduct online Ohio Youth Skillathons this year with the opportunity to compete for the highest score; no cash awards will be involved. These Skillathons will include similar educational materials, by species, that are evaluated at the Ohio State Fair. In-person Skillathons will be at the Ohio State Fair and youth participating at the youth livestock shows will have an opportunity to compete.

Deadline to register for all Virtual Ohio Youth Skillathons is **June 21, 2022**.

See the flyers below and save the dates for the species you want to participate in and put your 4-H project knowledge to the test! Times, details about rules and registration are provided on this page. If you have questions about the Ohio 4-H Skillathon, contact us at

4hanimalscience@osu.edu.



VIRTUAL OHIO YOUTH SKILLATHONS

To support the continued learning experiences of youth livestock and companion animal exhibitors throughout Ohio, Ohio State University Extension and the Department of Animal Sciences are pleased to once again offer virtual Skillathons in 2022! Our 4-H Animal Sciences team will conduct online Ohio Youth Skillathons (in addition to in-person Skillathons at the Ohio State Fair) with the chance to compete for the highest score. These Skillathons will encompass the similar educational materials, by species, that would typically be evaluated at the Ohio State Fair. Please save the date(s) for the species you would like to participate in. And keep an eye out for a registration announcement!

Cavy: Wednesday, July 6
Dog: Wednesday, July 6
Poultry: Wednesday, July 6
Rabbit: Wednesday, July 6
Goat: Thursday, July 7
Horse: Thursday, July 7

Llama/Alpaca: Thursday, July 7
Sheep: Thursday, July 7
Beef: Friday, July 8
Dairy: Friday, July 8
Swine: Friday, July 8

IN-PERSON OHIO YOUTH SKILLATHONS

To support the continued learning experiences of youth livestock and companion animal exhibitors throughout Ohio, Ohio State University Extension and the Department of Animal Sciences are pleased to once again offer in person Skillathons in 2022! Our 4-H Animal Sciences team will conduct Ohio Youth Skillathons (in addition to virtual Skillathons at the Ohio State Fair) with the chance to compete for the highest score.

These Skillathons will encompass educational materials designed to challenge youth while teaching them about their project. Please save the date(s) for the species you would like to participate in and keep an eye out for the release of topics and study materials.

Dog: Thursday, July 14
Horse: Wednesday, July 20
Dairy: Wednesday, July 27
Poultry: Wednesday, August 3
Sheep: Wednesday, August 3

Beef: Thursday, August 4
Swine: Thursday, August 4
Goat: Friday, August 5
Rabbit: Friday, August 5



2022 CALENDAR OF EVENTS

JANUARY 29th	4-H Advisor & Volunteer Training Year-End Awards Presentation Clothing Consignment Closet (NEW!)
FEBRUARY 26th	Hippology, Horse Bowl & Horse Judging Clinic Communications Contest (Oral & Poster)
APRIL 9th	Horse Bowl
JUNE 13th	Hippology & Horse Judging Contest
JULY 18th-22nd	Ohio State Fair Junior Horse Show Horse Skillathon (Date TBD)
AUGUST 27th	Groom & Clean Contest
SEPTEMBER 9th-10th	Competitive Trail Ride
DECEMBER 3rd	Ohio 4-H Horse Judges Clinic

U For more information, visit www.horse.osu.edu U

Junior Horse Show T-Shirt Contest



The Junior Horse Show T-Shirt Contest is back again! Get creative for a chance to win 10 free t-shirts for your club and be featured as this year's state fair t-shirt design! Deadline is April 1st and all entries need to be emailed to cole.436@osu.edu to be eligible.

The 2022 Project Book Order Form for head club advisors is now available at jefferson.osu.edu/program-areas/4-h-youth-development/forms

These forms will only be accepted with a head advisor's signature.

Club checks are the preferred method of payment for project books.

No books may be returned after purchase, even if a child drops a project.

EXPLORING YOUR FUTURE AND GROWING A CAREER: VIRTUAL CAREER FAIR

MARCH 22, 2022

6pm (MST)

KEY NOTE
SPEAKER

LEARN FROM
PROFESSIONALS

COLLEGE
RECRUITING

**SPECIAL GUEST:
TRIS MUNSICK**



EXPLORE YOUR INTERESTS AND SKILLS WHILE VISITING WITH PROFESSIONALS
WYOMING4H.ORG/VIRTUAL-CAREER-NIGHT UW Wyoming 4-H

Western Youth Horsemanship

The University of Findlay is presenting a youth western horsemanship school to further educate interested riders. The school offers the same techniques that are taught in the University's Western Equestrian Studies Program.



Novice/Intermediate Session (ages 10-18):

June 21-June 25, 2022

Advanced Rider Session (ages 12-19):

June 26-June 30, 2022

Students applying for the Advanced Rider Session must submit a video of their riding or letter of recommendation. Acceptance is based on approval by equestrian staff. There are a limited number of horses available for lease at this session for the additional cost of \$90. If you are not planning of bringing your own horse, please call the Western offices at 419-434-4656 to confirm there are horses still available.

Visit <https://www.findlay.edu/sciences/equestrian-studies/summer-activities> for more information.

2022 Horse Camp at the Jefferson County Fairgrounds

Theme: Olympics



Save the Date:
June 3-5, 2022

Registration Deadline May 2, 2022

Cost:

Jefferson County Resident: \$90

Non-Jefferson County Resident: \$120

Cloverbuds: \$5

Registration will be in the May-June Newsletter and will be sent to 4-H families.

Late registration (after May 2):
\$200 and no guarantee of T-Shirt

Cooperative Connection

21

Jefferson County Extension

Who Can I Call With Questions About My....

Who you are you going to call when you need to understand what is expected of a “new-to-you” animal/livestock project?

Our 2022 Key Leaders!

Poultry (Including All Chickens, Ducks, Geese, Fowl, Etc.) - Emily Lamantia - 740-317-7454;

Marlene Lamantia – 740-632-1518

Beef - Bonnie Randolph - 740-275-6728

Swine/Dairy Goat - Clint Finney - 740-359-3737

Horse - Deb Grimes - 740-424-4996; Carl Glenn - 740-381-8548; Robin Wedlake (State/County Equine Team) - 740-424-7606

Pygmy Goat - Jessica Sudvary - 740-317-8096

Meat Goat - Kelly Valuska - 740-632-7135

Dairy - Steve Griffith - 740-232-5755

Sheep - Hayden Johnson - 740-632-6424

Rabbit - Tammy Mazzaferro - 740-346-6306

Dog - Danielle Lish - 740-827-4516

Small Animals (Lizards, cats, turtles and more) - Corbin Hoffman - 740-424-3231



Occasional Quantity Cooks Training

THIS TRAINING IS MANDATORY FOR ONE PARENT/GUARDIAN PER IRON CHEF TEAM!

Ohio State University Extension provides training for Extension volunteers and employees who provide leadership to the preparation and/or service of food at sponsored events. Occasional Quantity Cooks training materials are designed to raise your awareness and increase your knowledge regarding food safety. The training is required by one adult per team competing in the Jefferson County iron chef competition.

This training will help you prepare as you plan for, prepare and deliver food for a one time event in your county. When engaged in programs/activities that include food preparation and/or service, Ohio State University Extension faculty, staff, and volunteers must follow local and state food preparation and service guidelines (when applicable); adhere to appropriate licensing procedures; and be knowledgeable of food safety guidelines.

Earning a 70% or higher in the course is required to receive a certificate of completion. Don't forget to print a copy of your certificate and email it to allison.325@osu.edu, or drop off a copy in the OSU Extension office, as verification that you have completed this training.

Students will learn basic practices for handling food safely, including good personal hygiene, preventing cross contamination, time and temperature abuse and proper cleaning and sanitizing.

Follow directions [here](#) to complete Occasional Quantity Cooks Training!

4-H Forestry & Wildlife Conservation Camp

April 22-24, 2022

Camp Activities Include:

- Tree I.D. Hike
- Fishing
- Radio Telemetry
- Wilderness Survival Techniques
- Sawmill & Tree Felling Demos
- Tree Climbing
- Wildlife Identification
- Hunting & Trapping Techniques
- Shooting Sports Activities
- Boating
- Campfire
- Evening Activities
- Outdoor Cooking
- Nature Crafts

Join us for a fun-filled weekend as we learn about conserving our natural resources. This camp is for youth ages 12-18 and is in partnership with Hocking College. We are excited to explore the great outdoors with our campers!



Located at Canter's Cave 4-H Camp
1362 Caves Road, Jackson, OH 45840

Questions?

Contact Tracy Winters, Gallia County Extension Educator
Email: winters.5@osu.edu Phone: 740.446.7007



Thanks to sponsorship from the Ohio 4-H Foundation, the camp fee for the first 40 campers is \$52.00 each! Once we have reached 40 campers, the registration will increase to \$105.00.

Register Today!

Registration Deadline: April 4, 2022

go.osu.edu/forestrycamp



LESLIE'S CORNER

Cloverbud and J-Fit



Hello Cloverbuds,

Here are a few fun facts! Ohio, believe it or not, is the largest wool producing state east of the Mississippi River. What do we use wool for?? An eagle's eyes are at least four times sharper than a humans'. Be on the look out for some eagles!

J-Fit Activities

This is for all 4-Hers' and Cloverbuds.

Let's see who can Hula Hoop for 3 minutes.

megaphone bead

Draw a big 4-Leaf clover outside with sidewalk chalk.

high five bead

Take a picnic to the park and go for a walk. **tennis shoe bead**

Fun Activities 4 Cloverbuds

March into 4-H by putting 4-leaf clovers on our windows. (Use the template on the next page or create your own)

homework bead

Spring has sprung, so let's start thinking of planting some vegetables. In the fair book, 7th department, there is a class G (lot 74-86) longest bean, largest carrot, largest tomato, etc..

Start your seeds and let's enter in the fair.

runner bead

Easter is April 17, earn a bead by having or going to an egg hunt.

cross bead

Participate in Iron Chef (Smoothie Citrus)

grape bead

MEETING FOR CLOVERBUDS AND SPROUTS

(FAIRGROUNDS MIDWAY PAVILION)

APRIL 21 STARTS AT 6PM (*rain or shine*)

PLEASE CALL OFFICE IF YOU CAN COME

We will be having a meeting to learn about **butterflies** (**flower bead**), and play the **parachute game** (**umbrella bead**), **scavenger hunt** (**cat bead**) and **octoball** (**O bead**).

Stay after meeting and fly your kite for kite day and earn an extra bead.

Please bring your own kite. (kite bead)

We will also be going on a small walk so wear your sneakers. (**foot bead**)

Also, wear a hat and a 4-H shirt for extra beads. (**shirt & hat bead**)

BRING ANY FINISHED CROSSWORD PUZZLES OR PHOTOS OF FINISHED ACTIVITIES FOR YOUR BEADS. ALSO, IF YOU HAVE BEEN COLLECTING POP TABS YOU CAN BRING THEM TO THIS MEETING AS WELL.

If you missed activities and want to make them up this is the meeting for you.

HOPE TO SEE YOU THERE.

Leslie Aftanas



MONDAY

Send a thank you or several to your 4-H advisors, market buyers, or other community members that support the 4-H program throughout the year!

**HAPPY 4-H
WEEK!**

2022



TUESDAY

Wear your 4-H gear to work or school!



WEDNESDAY

Refer a friend to 4-H!
Call 740-264-2212



THURSDAY

Post a 4-H #TBT



FRIDAY



SERVE YOUR COMMUNITY WITH AN
ACT OF KINDNESS AND POST ON
YOUR SOCIAL MEDIA AND ON THE
OSU EXTENSION JEFFERSON COUNTY
4-H FB PAGE WHAT YOU DID IN THE
NAME OF 4-H

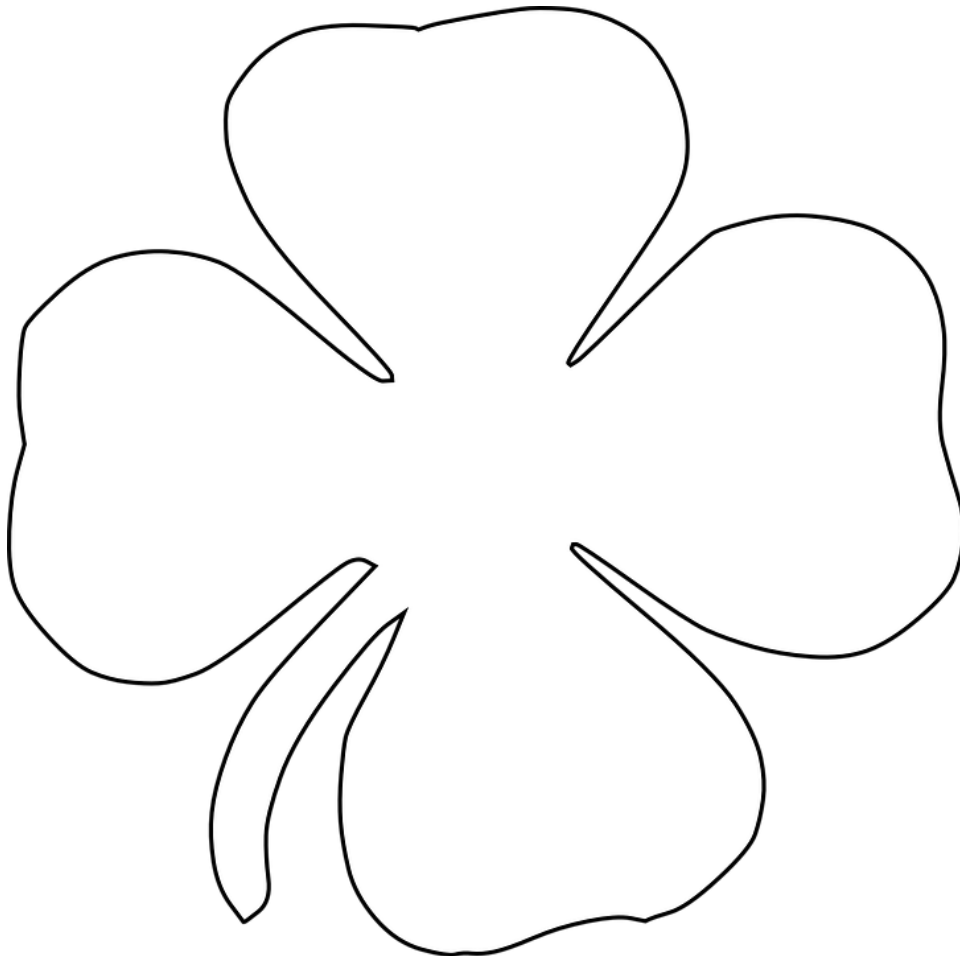
Our clubs decorated windows all over the county to promote 4-H! For a list of businesses and the clubs that worked hard illustrating how they "Find Your Spark in 4-H," click [here](#). Thank you for all that you do in the name of 4-H!

5

March Into 4-H!

Use the template below to create four-leaf clovers to decorate your windows or create your own!

(Cloverbuds earn a homework bead)



March - April Cryptogram

Decode the message.

Each letter in the phrase has been replaced with a random letter or number. Try to decode the message!

A	B	C	D	E	F	G	H	I	J	K	L	M	N	O	P	Q	R	S	T	U	V	W	X	Y	Z
												8		1											

O M O M
 13 1 8 22 5 26 13 10 26 7 26 25 13 7 26 13 13 26 24 21 1 24 8 6
 M O M M M
 17 4 23 7 8 6 17 1 8 8 23 16 2 13 6 8 6
 O M O
 17 1 23 16 13 24 6 22 16 9 8 6 18 1 24 4 9

Community Service Opportunity



2022 Tire Collection/Community Cleanup Schedule

HOURS: 9am-2pm

Sponsored by JB Green Team and Jefferson Township Trustees

Site	Location	Collection Days	Comments
Wells Township	213 Market St, Brilliant, OH 43913 (Township slag yard next to playground, across from American Legion)	April 7th	Thursday
Mt. Pleasant	Intersection St. Rte. 150 & Co 7, Dillonvale, OH 43917 (Township Slag Yard)	April 14th	Thursday
Salem Township	Township Garage, 14 Twp Rd 216A, off St. Rte. 43, Richmond. Next to Ron's Auto Richmond Village	April 21st	Thursday
Cross Creek Township	Township Garage, Main Street (Old ODOT garage across from State Patrol) Wintersville, OH	April 28th	Thursday
Ross Township	Township Garage, 6172 Co Rd 54, Irondale OH	April 28 - May 1st	Just place Community cleanup containers. They provide labor
Springfield Township	Springfield Township Complex, 722 Monroe Street, Bergholz, OH	May 5th	Thursday
Saline Township	Saline Township Complex, 164 Co Hwy 50A, Hammondsville, OH 43930	May 12th	Thursday
Toronto City	700 Block N. Fifth Street, Toronto (closed site - no drop off)	May 9 - 13th	Tire Trailer. Our staff on Thursday 5/12 ONLY to load tires.
Knox Township	Township Garage, 25 Twp Rd. 247, Toronto, OH	May 19th	Thursday
Brush Creek Twp	Township Garage, 6701 County Rd 55, Salineville, OH	May 19th	Thursday (NO TIRES-take to any other collection)
Island Creek Twp	Township Garage, 2371 State Route 213, Steubenville	June 2nd	Thursday
Smithfield Township	Smithfield 152 & County Rd 10 intersection, Smithfield, OH 43948	June 9th	Thursday
Wayne Township	Township Garage, Co Rd. 26 (just past Cemetery), Bloomingdale, OH 43910	June 16th	Thursday
Steubenville Twsp	Steubenville Township Garage, 25 Smithfield St, Mingo Jct (George's Run - at old ODOT Garage)	June 23th	Thursday
Warren Township	Caruso Lot, 139 Third St, (rear), Tiltonsville, OH	June 30th	Thursday

Find list of rules at jbgreenteam.org



JOANN  

How about a weekend project?

Head to your @JOANN store to create with your hands and give with your heart to 4-H.

Ohio 4-H will use the funds received for mini-grants to county programs! Give now through April 30 at JOANN!

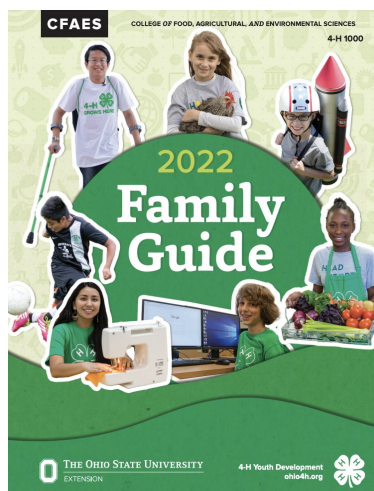
Advisors Mark Your Calendars!

March 9, 7 PM – Advisor Training Virtually. Send an email to allison.325@osu.edu to receive a link.

March 15 – Enrollments due for honor club status

April 15 – Last day for enrollments

May 1 – Last day to add/drop projects



Pick Your Projects for 2022!

All Enrollments for returning members must be completed by **March 15** for **Honor Club Status!**

IF YOU ALREADY HAVE AN ACCOUNT in 4-H online, you can access the enrollment site [here](https://ohio4h.org/familyguide).

Last day to add/drop projects May 1st!

Download at ohio4h.org/familyguide click on the picture below to view online flipbook!



(COLUMBUS, Ohio)— Ohio Governor Mike DeWine and Ohio Expo Center & State Fair General Manager Virgil Strickler announced that the 2022 Ohio State Fair will run from July 27 to August 7. “The Ohio State Fair brings people together. It’s a place where we can all celebrate our great state and make memories that will last a lifetime,” said Governor DeWine. “Fran and I absolutely love fairs, none more than the Ohio State Fair. We have experienced so many remarkable moments with our children and grandchildren at fairs over the years, and this summer, we can’t wait to enjoy the Ohio State Fair once again.” This year’s 167th Ohio State Fair is possible thanks to the hard work of thousands of staff members, exhibitors, volunteers, vendors, partners, performers, concessionaires, youth leaders and sponsors. At this time, the Ohio State Fair staff are actively working on enhancements that will make this year’s Ohio State Fair safe, fun, and memorable.

Visit <https://ohiostatefair.com> for more information.



In Memory Of

Sheriff Fred J. Abdalla

March 24, 1944-February 21, 2022



Sheriff Fred J. Abdalla was a decorated Army veteran, dedicated sheriff, long time friend and supporter of Jefferson County Jr. Fair. He was a tireless advocate for children, the mistreated, and the elderly. He proudly served Jefferson County for 37 years as sheriff and was an advocate of many special programs including Jefferson County 4-H. Sheriff Abdalla loved our fair and called it the best week of the year. He will be greatly missed!



Cooperative Connection



28



Jefferson County Extension

Future Leaders Under Construction



Your Jefferson County Camp Counselors have been busy developing this year's Camp Piedmont program! Counselors completed their first training on Monday, Feb. 21! As part of the training, counselors voted on the theme! Parents you can start planning now!

This year's theme is..... drum roll please.....

CONSTRUCTION!!!!

Our counselors are planning all the favorite traditional activities like campfires and dances, with some extra activities involving legos, building forts, and drawing diagrams! Perhaps youth will even enjoy caricature visits from counselors dressed like those favorite construction worker cartoon characters! Mark down the dates of **June 15-18!** More information will be sent out as it becomes available!

Youth must be at least 8 and in third grade by Jan. 1, 2022, to age 13 as of Jan. 1, 2022, to attend camp.

Here is the link to the [4-H Camp Scholarship Form](#) for families in need. Scholarship forms must be accompanied by a registration form. Here is the link to the [Camp Registration Form](#). All forms are due **no later than May 6.**

**Learn about the 4-H Camp Piedmont Benefit on
March 26 here.**

SEASON CALENDAR

MARCH

3/1	Last day to sign up for Junior Leaders
3/4	Iron Chef entries due
3/6	Club Window Decorating in place
3/6-12	Ohio 4-H Week
3/8	4-H Committee Meeting @ OSU Extension office, 7PM
3/9	Economic Outlook & Policy Webinar , 12PM
3/11	A Day in the Woods: Native Grasslands & Pollinator Habitat for Wildlife
3/15	Returning member enrollments due for 2022 Honor Club Status
3/17	Pesticide & Fertilizer Exam Study Session @ Barnesville Farm Bureau Bldg, 5:30-7PM Pesticide & Fertilizer Exam @ Extension office, 9AM-1PM Forages for Horses Webinar #3 , 7PM
3/17-20	Ohio Beef Expo, Columbus
3/18	Occasional Quantity Cooks training due
3/19	Youth Poultry Clinic @ ATI, Wooster
3/21	OSU Beef School , 6PM
3/22	Cattle Management School Session #3 , 7PM
3/23	Water Quality Wednesdays , 10-11:30AM
3/25	East Ohio Women in Agriculture Conference @ FFA Camp Muskingum , 9AM
3/26	Iron Chef Competition @ Jefferson JVS, 12-4PM
3/29	Turkey Hatch Date Camp Counselor Training, 5-8PM
3/30	Camp Counselor Training, 5-8PM
3/31	Fertilizer Certification , 9AM-12:30PM
3/31	Pastures for Profit Webinar #1 , 7PM

APRIL

4/19	Pesticide & Fertilizer Exam @ Harrison County Fairgrounds , 9AM-1PM PM
4/5	Grill Smart @ Meadowbrook Church , Rayland, 5PM
4/6	Economic Outlook & Policy Webinar , 12PM
4/7	Pastures for Profit Webinar #2 , 7PM
4/7-10	Equine Affair, Columbus
4/8	A Day in the Woods: Using Tech for Woodland Management
4/9	Last free Quality Assurance @ Jefferson County Fairgrounds Kitchen
4/11	Horse Bowl OSU Beef School Spotted Lanternfly Management Workshop
4/14	Pastures for Profit Webinar #3 , 7PM
4/15	Last day to enroll in Jefferson County 4-H for 2022 Jefferson County 4-H Scholarship Applications Due!!
4/18	\$25 Last Chance Quality Assurance @ Jefferson County Fairgrounds Kitchen
4/20	Farm Office Live , 7PM
4/22-24	Forestry Wildlife Conservation Camp
4/26	Landscape Design 101 @ Extension Office , 3PM
4/29-5/1	Global Youth Service Day
4/30	Master Gardener Spring Garden Party & Plant Sale @ Scio Branch Library , 9AM

*Dates subject to change



[CLICK HERE](#) TO VIEW THE 2022 JEFFERSON COUNTY 4-H CALENDAR

Visit jefferson.osu.edu or join the Agriculture & Natural Resources Group on our Facebook page @JeffCoExtension for updates and future webinars, podcasts and other great opportunities!

Ohio State University Extension Jefferson County greatly appreciates the support of the Jefferson County Commissioners: Dr. Thomas Graham, Dave Maple, Jr., and Tony Morelli.

Ohio State University Extension embraces human diversity and is committed to ensuring that all research and related educational programs are available to clientele on a nondiscriminatory basis without regard to age, ancestry, color, disability, gender identity or expression, genetic information, HIV/AIDS status, military status, national origin, race, religion, sex, sexual orientation, or veteran status. This statement is in accordance with United States Civil Rights Laws and the USDA.

