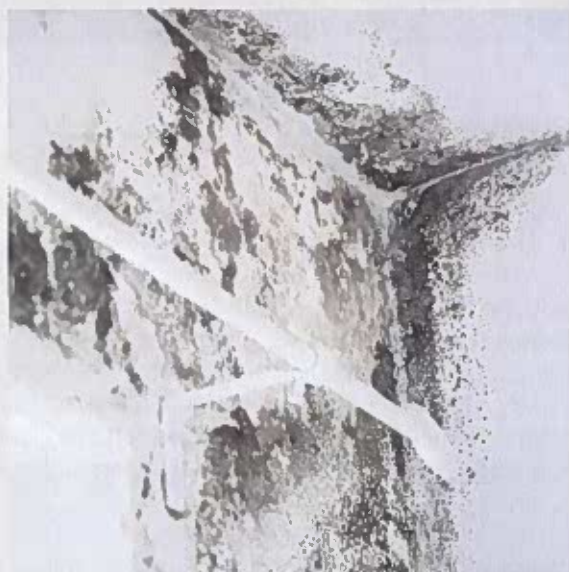


Cooperative CONNECTION

Covering county news and events for Extension programs, including
Agriculture & Natural Resources and 4-H Youth Development

JANUARY - FEBRUARY 2023

HOUSEHOLD MOLDS



By: Erika Lyon

The term 'mold' is used for any fungus producing spores asexually (no mushrooms present). Molds are fungi that can be:

- Allergenic – cause allergic reactions
- Pathogenic – cause disease
- Toxicogenic – produce toxins

Each of these types can be hazardous to human health.

(continued on pages 2-3)

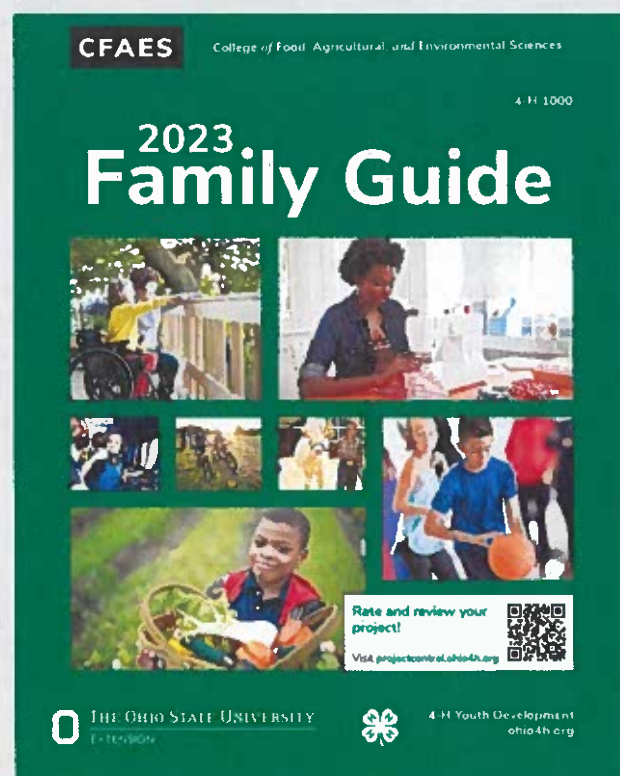
2023 JEFFERSON COUNTY 4-H ENROLLMENT IS OPEN!!!

2023 4-H Enrollment is OPEN!!! If you are a returning 4-H member, to register visit <https://4honline.com/>. Please use the email and password that you enrolled with previously. **DO NOT** create a new account.

If you are new to 4-H, call **740-264-2212** and let Christina or Leslie walk you through the account creation phase!

You should all should have received new Family Guides in the mail! Thank you Kroger! Advisors we have copies in the office, if you need them for brand new members without 4-H online accounts just yet!

We are looking forward to a great 2023!





HOUSEHOLD MOLDS

By Erika Lyon, Agriculture & Natural Resources Educator, Jefferson and Harrison Counties

The term 'mold' is used for any fungus producing spores asexually (no mushrooms present). Molds are fungi that can be:

- Allergenic – cause allergic reactions
- Pathogenic – cause disease
- Toxicogenic – produce toxins

Each of these types can be hazardous to human health.

However, molds are everywhere, and it takes the right conditions for these fungi to develop. Most molds typically thrive when there is access to water – flooding, leaking pipes, wet carpet, or spots where moisture collects, such as bathroom corners, often lead to mold development. Molds also require a food source, which is often materials containing cellulose. They can grow on paper products, including wallpaper and some drywall components, as well as carpet, upholstery, insulation, paints and even dust particles.

Molds produce spores that can become airborne and allow the fungus to spread. These spores can be inhaled – those with asthma or mold allergies may have severe reactions. Some species of molds can germinate in the lungs and cause infections – this is especially a concern in those who are immunocompromised. Some species can further suppress a person's immune response, increasing vulnerability to other disease-causing agents.

PREVENTION & CONTROL

Usually not just one mold is present – there are many kinds in every building. It takes the right conditions though for mold spores to germinate and grow. Prevention and control measures frequently address the conditions for mold growth (moisture).

One of the best prevention practices you can do is to prevent longstanding moisture buildup. Having wet firewood, watering plants, and using humidifiers are just a few situations that can increase moisture in the air that allow for many molds to thrive. Check and fix leaks in roofs and plumbing and regularly clean gutters. Directing gutters away from a home's foundation is a way to stop water from pooling in the basement. Avoid getting carpet wet – even to clean it – as molds can grow underneath the carpet fibers.

Using dehumidifiers and fans to keep homes dry will go a long way towards prevention by reducing humidity. Exhaust fans installed in bathrooms, kitchens and dryers can help push moisture outside, and window and ceiling fans will help circulate air. Make sure attics have vents. Closets are another place that may experience higher humidity – leave doors open or install a fan and leave spaces in between clothing on hangers. Keep interior doors open to improve airflow. The EPA recommends keeping humidity below 60% to prevent mold growth.

Avoid condensation as much as possible. Condensation occurs when a cold object meets warm, humid air. Adding insulation to surfaces that are usually cooler and increasing the flow of heated air throughout a home can reduce the formation of condensation.

Correct any drainage issues around a building's foundation – French drains and waterproofing membranes are a couple of ways to address basement water issues. If a home has a crawl space instead of a basement, vapor barriers can help reduce moisture.



MOLD continued...

Before finishing basements, make sure any water issues have been fixed to avoid problems down the road.

Once mold appears, always use protective equipment when treating. Rubber gloves, eyewear, long sleeves and pants, and respirators are often required to remove mold to avoid contact. If there is a musty odor, make sure to thoroughly check behind cabinets and wallpaper.

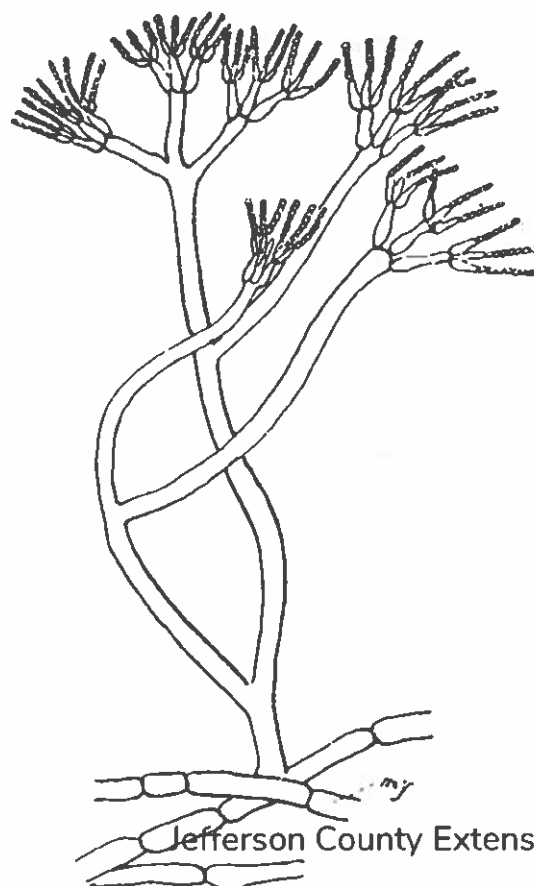
Clean and disinfect surfaces – this can include using a stiff brush, hot water, and soap or detergent. Mixing one part liquid household bleach to nine parts water will effectively sanitize surfaces. Mixing bleach and ammonia can create hazardous fumes – avoid using ammonia to clean surfaces with mold. Keep in mind that the fungus may be well embedded in some materials such as wood, and cleaning and disinfecting may have limited success. If mold is found growing in carpets, mattresses or woody materials, those items should be removed. Make sure surfaces are dry once you are finished.

Make sure HVAC systems, especially air conditioning units, are properly installed and well maintained. Air conditioners should also be properly sized for the space and HVAC systems should be sealed to prevent leaks.

You won't be able to get rid of every fungal spore in a house but using air purifiers with HEPA filters can reduce the spores and dust in indoor air. Look for higher Minimum Efficiency Reporting Values (MERVs), which can be between 14-16 – this means a filter can capture most spores produced by molds.

REFERENCES

- d'Halewyn et al. 2022. Mould Compendium. Public health expertise and reference centre - Institut national de santé publique du Québec. <https://www.inspq.qc.ca/en/moulds>
- Environmental Protection Agency. 2022. What is a HEPA filter? <https://www.epa.gov/indoor-air-quality-iaq/what-hepa-filter>
- Kahn, AA and SM Karuppayil. 2012. Fungal pollution of indoor environments and its management. Saudi Journal of Biological Sciences. 19(4): 405-426 <https://www.sciencedirect.com/science/article/pii/S1319562X1200040X>
- Mousavi et al. 2016. Aspergillus species in indoor environments and their possible occupational and public health hazards. Curr. Med. Mycol. 2(1): 36-42. <https://www.ncbi.nlm.nih.gov/pmc/articles/PMC5490296>
- Salo et al. 2005. Dustborne *Alternaria alternata* antigens in US homes: Results from the National Survey of Lead and Allergens in Housing. Env. and Occ. Respiratory Disorders: 116(3): 623-629. [https://www.jacionline.org/article/S0091-6749\(05\)01359-X/fulltext](https://www.jacionline.org/article/S0091-6749(05)01359-X/fulltext)
- Turner et al. 2022. Preventing mold in your home. NC State Extension Publications. <https://content.ces.ncsu.edu/preventing-mold-in-your-home>
- Turner et al. 2022. Removing Mold From Household Items. NC State Extension Publications. <https://content.ces.ncsu.edu/cleaning-mold-from-household-items>



OK TO PRUNE OAKS. NOW'S THE TIME TO SCHEDULE!

By Tom DeHaas, Agriculture & Natural Resources Educator, Erie County

There are several great reasons to prune oaks but the most important is to reduce the risk to your trees from contracting Oak Wilt. Let's start with "What is oak wilt and why is now a good time to prune oaks?"

Oak wilt is a fungus, *Bretziella fagacearum*, (formerly *Ceratocystis fagacearum*). It causes the vascular tissue to clog. This lethal fungus that can kill a mature oak in less than a month's time.

It is vectored by the sap beetles, also referred to as Picnic Beetles (Coleoptera: Nitidulidae), which carry the fungus and transmit it while feeding on freshly pruned or damaged oaks during the summer months. Pruning actively growing oaks causes them to bleed, which can attract picnic beetles that may be carrying the fungus.

If an oak tree becomes infected, it can transmit the fungus to other nearby oaks that have roots grafted to each other. This commonly occurs in a stand of oaks growing together in a forest setting.

For additional information, check out the OSU Factsheet on Oak Wilt at: <https://ohioline.osu.edu/factsheet/plpath-tree-02> authored by Pierluigi (Enrico) Bonello with OSU's Department of Plant Pathology. Also, a previous BYGL post by Amy Stone highlights facts about Oak Wilt <https://bygl.osu.edu/node/1668>

The purpose of this post is to promote winter pruning. While all oaks are susceptible to this fungus, those in the red or black group: black, pin, northern and southern red, scarlet, shingle and Shumard oak are extremely susceptible and can die within a few weeks of infection. Oaks in the white group that include bur, chinquapin, post, swamp white, and white oak are more tolerant of the disease and can even survive infection for one or more years while displaying declining symptoms.

We have passed the time of year where oaks are actively growing and are now dormant. Typically, the recommendation to not prune is April 15 through October 15. Now that oak trees are dormant means it is a perfect time to prune. In addition, many arborists tend to have more availability at this time of year. Exceptions to only pruning in winter would be storm damage (ice or wind) and hazardous conditions of trees that can harm people or property when an arborist's workload can really increase.

A professional arborist will follow procedures to reduce the transmission of oak wilt.

- The primary protection is dormant pruning between November 1 and April 1.
- Pruning can include removing suckers, cleaning out the interior, removing low growing branches, and removing dead wood and branches.

If you have an oak that is already completely dead, you want to remove it if it presents a hazard to people or structures. If a tree has shown signs of decline, you may want to send a branch in for diagnosis at the OSU - Plant Pest Diagnostic Clinic (<https://ppdc.osu.edu>). In order to diagnose oak wilt correctly the tree and the fungus has to be actively growing and present.

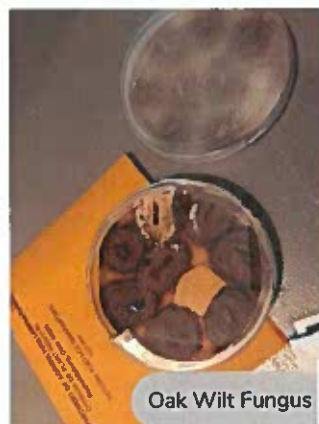
By placing a call to your local arborist, you can schedule to have your trees pruned while the oaks are dormant. This will reduce the risk of oak wilt transmission through picnic beetle feeding.

So how do I find a certified arborist? The International Society of Arboriculture (ISA) has a locator tool on their website. By putting in your zip code, you can search for local arborists. <https://www.treesaregood.org/findanarborist/findanarborist>

In addition, if you have fears on whether your tree is or be at risk of falling, ISA offers credentials to arborists that have completed the Tree Risk Assessment Qualification (TRAQ). This is not for just oaks but any tree which may present you with concerns.

The ISA Tree Risk Assessment Qualification (ISA TRAQ) is a voluntary qualification program designed to train and assess candidates in a specialized field of arboriculture. When a professional earns the ISA TRAQ credential, they should be recognized by their peers and the public as a tree care professional who has specialized knowledge in tree risk assessment.

Put it on your list, check it twice, schedule your arborists, so your OAKS LOOK NICE!





THE THRIVING FARMER

information to help farmers and their families make healthful choices

CHECK OUT THIS TOOL

by Joseph Maiorano, OSU Extension, Harrison County

High tech tools, like the drone in the picture (above), are slick, or sick (to young farmers). These tools, which help farmers manage their farms, can help warn of potential problems. I want to speak with you about another tool: one that is neither slick, sick, nor high tech, but it offers a convenient, albeit imperfect, way to help you manage your health.

BODY MASS INDEX

In 1832, mathematician Adolphe Quetlet created the body mass calculation (Milne, Tierney, Caulfield, 2016). Body Mass Index (BMI) gives you a convenient means to measure your body fat based on your height and weight. BMI does not measure body fat, rather it calculates the percentage of body fat on a body frame. Categories, which are based on percentages of fat, include underweight, normal, overweight, and obese. BMI has a direct correlation between percentage of body fat on a frame and overweight-related problems—as one increases, so does the other. Persons with higher BMI may be at risk for developing chronic diseases, such as heart disease; high blood pressure; Type 2 Diabetes; osteoarthritis; sleep apnea; certain cancers, e.g., colon, breast, gall bladder.

BMI is your weight, in kilograms, divided by your height, in meters, squared. Or, you can search online and you will find BMI calculators that allow you to enter your height, in inches, your weight, in pounds, click calculate, and—voilà—your BMI. BMI under 18.5 is considered underweight; 18.5 to 24.9 is normal; overweight is 25 to 29.9, and obese is over 30. If your BMI indicates that you are underweight, overweight, or obese, schedule an appointment with your health care provider, who will use other tools and techniques to more accurately assess your health, weight, and potential for health problems.

IMPERFECTION

Like other tools, the BMI is imperfect. The gauges in your tractor, for example, are not perfect, yet you look to them for help in warning you of potential problems. Similarly, the BMI, for example, does not consider the types of mass that composes one's weight. As such, an athlete may have a large BMI, yet, because that athlete's mass includes more muscle and less fat than the average person, that athlete compared to others with a similar BMI may have lower risk for chronic diseases.

The BMI, which helps warn you of possible health problems, is a tool that farmers can use to help manage their health. As such, BMI may be an important tool to have on your farm.

Joseph works for Ohio State University Extension, Harrison County. Joseph and his wife, Mary, live in Steubenville, Ohio. They have four sons, including two who live at home.

REFERENCES

Body Mass Index-BMI. (ND). World Health Organization. Downloaded on November 19, 2021, from, <https://www.euro.who.int/en/health-topics/disease-prevention/nutrition/a-healthy-lifestyle/body-mass-index-bmi>

Milne, V.; Tierney, M.; Caulfield, T. (2016). 'An imperfect tool': The controversy over whether BMI is the best measure of obesity. Healthy Debate. Downloaded on November 19, 2021, from, <https://healthydebate.ca/2016/01/topic/bmi-obesity/>

Photo Gomez, H. (n.d.). Downloaded from, <https://pixabay.com/photos/spraying-sugar-cane-sugar-cane-2746350/>



DON'T FORGET TO CHECK YOUR MIRRORS

By Garth Ruff, Beef Cattle Field Specialist, OSU Extension (Previously published in the OSU BEEF Cattle Letter)

From time to time, I will jump in the farm truck to go to town and pick up supplies or run some errands. Typically, I am not the primary driver of the vehicle, and the seat and mirrors are almost always set for someone of much small stature. While I must move the seat back to get in the truck, I often forget to adjust the mirrors until I am going down the road as I am more focused on where I'm going.

As we go into 2023, I think we need to check our mirrors to remember where the cattle business has been in the past couple years. While both feeder and fed cattle markets look to be rather favorable in 2023 and likely again in 2024, it is easy to loosen the reigns and become a more relaxed in providing daily Vitamin Management. Good management decisions made when cattle prices were lower are still good management decisions when the markets are more favorable.

Having wrapped up the OCA Replacement Female Sale, demand for replacement females remains strong, partly influenced by sustained strong cull cow prices and optimism in feeder calf prices looking ahead to the next marketing year.

While I am optimistic about what the next year or two can bring to the cattle industry but, we should not let a rising market be an excuse for not dialing in cost of production, efficiency, and ultimately beef quality. Also while input cost maybe slightly lower, they are still high compared to pre-pandemic.

A few thoughts as I recap the year that was 2022.

The year started with some uncertainty as the intensity of the COVID pandemic waned and we returned to a mostly familiar semblance of normal.

Drought was probably the word of the year in agriculture across certainly the western half of the country, but even in pockets close to home as well. Regional long-term drought is a double-edged sword as the have and the have-nots with regards to moisture are often in two different trajectories. This current market is fueled by a drought limited supply as record numbers of beef cows were culled in 2022.

Farmers and ranchers are resilient, and some moisture in the form of rain or snow in the West should add even more optimism to the feeder cattle markets moving forward in the near term.

There have been a number of discussions with regards to beef packing capacity in this country. Based on recent fed cattle slaughter numbers, combined with a smaller calf crop in 2023 and 2024, I think we can put those discussions to bed. A foremost concern of mine and many others going forward is labor. How can we make meat production a more labor efficient process both locally and nationally?

Ohio has invested nearly \$40 million dollars into existing meat production facilities across the state to address that very question and from what I have seen in my travels, the results have been a good investment.

Stay tuned for winter Extension beef programs. We have several meetings planned as we work to meet education needs of Ohio Cattlemen. Have a Merry Christmas and Happy New Year!

CFAES

Are you MarketReady?

Workshop Series
Wednesdays
February 1, 8, 15 and 22
7-8 PM

Call 740-264-2212 or email
lyon.194@osu.edu for the Zoom
link

THE OHIO STATE UNIVERSITY
EXTENSION

FRUIT PRUNING WORKSHOP

TUESDAY
MARCH 7TH
1-4PM

Kolb Orchard, Toronto, OH

Join the Jefferson & Harrison Master Gardener Volunteers to learn about pruning blueberries, raspberries, apples, pears and more!

Cost: \$15 per person, no cost for Master Gardener Volunteers
*Tab credit for the Jefferson/Harrison MGW program

Pre-registration required -
CALL 740-264-2212 FOR LOCATION INFORMATION AND TO REGISTER

Eastern Ohio Grazing Council Winter Workshops

4th Thursdays
January through March

January - Harrison County Fairgrounds
February - Carroll Co. Extension Office
March - TBA

Call Carroll SWCD to register 330-627-9852



Introduction to *Jefferson & Harrison*
Cattle Management School

ARTIFICIAL INSEMINATION (AI)

Monday

March 20th

6-9 PM

Harrison County Fairgrounds

This class will cover the basics of AI with demonstrations and hands-on activities.

Cost:
\$20/person
*Payment due prior
to event

Space limited to
20 participants.
Pre-registration
required

Register by calling
740-264-2212

2022 Census of Agriculture

The Census of Agriculture is a complete count of U.S. farms and ranches and the people who operate them. Even small plots of land – whether rural or urban – count if \$1,000 or more of agricultural products were produced and sold, or normally would have been sold, during the census year.

If your farm meets this benchmark and you have never received NASS surveys or censuses, you can sign up to be counted online at <https://www.agcounts.usda.gov/static/get-counted.html>.

The Census of Agriculture, conducted once every five years, looks at land use and ownership, producer characteristics, production practices, income, and expenditures.

Pesticide & Fertilizer Licensing

EXAM INFORMATION

The 2022-2023 pesticide & fertilizer exam schedule is now available at go.osu.edu/pesticideexam!

Visit the registration link to view scheduling and locations available.

Exams are scheduled for the following dates in Jefferson and Harrison Counties January through March:

January 9th 9AM-1PM
Jefferson Co. Towers Building/OSU
Extension, 2nd Floor Conference
Room, 500 Market Street,
Steubenville, OH

February 6th 9AM-1PM
Harrison County Fairgrounds Commercial Building
550 Grant Street,
Cadiz, OH

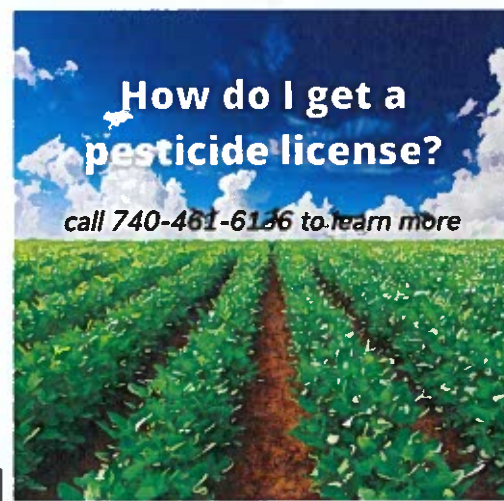
March 8th 9AM-1PM
Jefferson Co. Towers Building/OSU
Extension, 2nd Floor Conference
Room, 500 Market Street, Steubenville, OH

Photo IDs will be required. Pencils and calculators will be provided.

Per OAC 901:5-11-08(A)(7), applicants must wait five (5) business days between testing sessions.

Multiple exams may be taken during a session, however, due to limited space, you may only register for one session per week.

Register for exams at pested.osu.edu/PrivateApplicator/testing



STUDY MATERIALS

Commercial applicators may receive study materials after submitting applications with license fees to the Ohio Dept. of Agriculture. Applicators may also request additional study packets from the Jefferson County Extension office - call 740-264-2212 to put in a request.

For more information on obtaining a pesticide license, visit pested.osu.edu. For fertilizer certification, visit nutrienteducation.osu.edu. You can also contact the Jefferson or Harrison County Extension offices with any questions.

Study materials may also be found on these websites. Hard copies of study materials may be in stock at your local Extension office - call ahead to check availability.

Core study session - Monday, January 16, 7PM - call 740-461-6136 to obtain Zoom link

Become a Woodland Health Professional



Looking for an opportunity to expand your landscaping business? Consider working with backyard woodlot owners!

Service providers that can help address the needs of small woodland owners are often in short supply. Many woodlands in Ohio are under 10 acres in size, and consulting and service foresters may not be able to add those properties to their already packed workloads if these property owners want assistance. This is where your green industry business can help!



The Ohio Woodland Health Practices for Service Providers online course provides an introductory training to managing small woodlands, assisting woodland property owners to meet their individual goals and improving woodland and ecosystem health. This course is for green industry professionals - such as arborists and landscape architects - working on private properties of <10 acres. The training will focus on the why and how of addressing common woodland health issues.

Cost of the course is \$90, and participants will have the option to be added to the online directory of service providers as well as receive a certificate upon course completion.

Enroll today to become a woodland health professional at <https://go.osu.edu/ohiowhp>

2023 OSU Beef Team Virtual Beef School • Wednesday Evenings 6:30p.m.

January 11

Beef Inputs and Outlook

A Look at Input Costs
Barry Ward, OSU Extension
Cattle Market Outlook
Garth Ruff, OSU Extension

February 8

Managing Reproduction

Presynchronization and Improving Fertility of Beef Cows
Alex Crist, OSU Animal Sciences
Synchronization and Natural Service
Dean Kreager, OSU Extension

March 8

Herd Health Management and Update

Asian Longhorn Tick and Theileria
Dr. Risa Pesepane, OSU Vet Preventative Medicine
Managing Disease in 2023
Dr. Justin Kieffer DVM, OSU Animal Sciences

April 12

Beef Team Live Roundtable

Ask Questions and Discuss Answers with
OSU Extension Beef Team Members

Register at: go.osu.edu/beefschool23

Details about all winter beef programs at beef.osu.edu

One Registration Link for all 4 Sessions - Contact: Garth Ruff, ruff.72@osu.edu





PASTURES FOR PROFIT

Three Part Series

TOPICS INCLUDE:

management intensive grazing, goal setting,
improving soil fertility and forage growth,
meeting animal needs, water quality,
paddock design, grazing economics, year
round grazing

JOIN US

MONDAYS 6-9PM

PART I FEBRUARY 13

Harrison County Fairgrounds Commercial
Bldg., 550 Grant St, Cadiz, OH

PART II FEBRUARY 27

Eastern Gateway Community College,
4000 Sunset Blvd, Steubenville, OH

PART III MARCH 13

Carroll County Extension Office,
540 High Street NW, Carrollton, OH

Pre-registration required. Register by Friday, February
10, 2023. Cost: \$55/person - includes meals and USB
with the course manual.

Call 740-264-2212 to register.

Make checks out to OSU Extension and mail to: OSU
Extension, 500 Market St., Ste. 512, Steubenville, OH 43952

Learn all about **MANAGEMENT INTENSIVE GRAZING**

Anyone interested in pasture
management and forage production
is welcome to join the course. Those
new to livestock and hay production
are encouraged to join.



Ohio Federation
of Soil and Water
Conservation
Districts



Eastern Ohio
Grazing Council



MEET OUR PARTNERS



Jefferson & Harrison **MASTER GARDENER VOLUNTEERS**



The Jefferson & Harrison Master Gardener Volunteer training consists of both online modules, hands-on labs and tours, and either a writing or presentation project. Interns are expected to attend an orientation session and a minimum of 5 labs but can pick and choose either by topic or date that best fits into their schedule. Labs run monthly from March through September. Modules must be completed within 6 months and lab requirements must be completed within a year from date of application. Cost of the training is \$100 per person and includes the online course and labs/tours. Classes are open year-round - apply at any time! Send questions to Erika Lyon at lyon.194@osu.edu or call 740-461-6136.

Master Gardener Volunteers in Ohio offer assistance with home horticultural questions, pest identification, school programs, demonstrations, research, and continuing education programs. Working with county Ohio State Extension personnel, Master Gardener Volunteers provide educational services to their communities. If you are a garden enthusiast, this is a great opportunity to share your gardening know-how and skills with others in your community.

To learn more about the application process, visit go.osu.edu/becomejeffharrmgv.

Interested in gardening but not necessarily in becoming a volunteer? Master Gardener labs and tours will be open to the general public. Cost to attend is \$15/person/session. Call 740-461-6136 for more information.

Training Topics

- basic botany
- soils, fertilizer and compost
- entomology
- plant pathology
- integrated pest management
- plant propagation
- houseplants
- lawn care
- home herb, vegetable and fruit production
- backyard wildlife management
- pollinators





CFAES

TOPICS INCLUDE:

Environmental Education &
Ecological Concepts

Hydrology & Aquatic Life

Geology & Soils

Plants & Forest Ecology

Wild Mushrooms & Foraging

Macroinvertebrates

Amphibians & Reptiles

Birds

Mammals

Weather & Climate

Stargazing

CONTACT:

Erika Lyon

740-264-2212

lyon.194@osu.edu

.....

CFAES provides research and related educational programs to clientele on a nondiscriminatory basis. For more information, visit cfaesdiversity.osu.edu. For an accessible format of this publication, visit cfaes.osu.edu/accessibility.

Become an

**OHIO CERTIFIED
VOLUNTEER
NATURALIST**

Classes start June 15th, 2023

Cost: \$130 per person, which includes
OCVN manual, name badge, and t-shirt.

Visit go.osu.edu/jeffharrocvn or call
740-264-2212 to learn more



THE OHIO STATE UNIVERSITY
EXTENSION

SOYBEAN CYST NEMATODE

Heterodera glycines

Soybean cyst nematode (*Heterodera glycines* - HCN) is a roundworm that has caused significant damage in soybean fields in Ohio in recent years. Soybean plants infected with these nematodes will often be short or stunted in growth and display yellow, chlorotic symptoms similar to a nutrient deficiency. Root galls caused by the nematode can often be mistaken for soybean n-fixing nodules - healthy soybean nodules will appear pinkish in color when split open. Keep in mind a field may appear healthy but still contain the nematode that leads to significant yield losses - confirmation often relies on samples submitted to diagnostic labs.

Crop rotation is critical for management of soybean cyst nematode. Not only rotating crops, but also rotating between resistant soybean varieties and sources of SCN resistance genes. The nematode has been known to build up resistance to previously resistant varieties such as PI 88788.

Contact your local Extension office with questions regarding soybean cyst nematode.



Nematode galls on roots. Penn State Department of Plant Pathology & Environmental Microbiology Archives, Penn State University. Bugwood.org



Infective juveniles of SCN (stained red) penetrating roots. Jonathan D. Eisenback. Virginia Polytechnic Institute and State University. Bugwood.org

Get the Great Lakes Early Detection Network (GLEDN) App!

GLEDN is an invasive species early detection and warning system for the Great Lakes region developed through funding provided by the National Park Service as part of the Great Lakes Restoration Initiative.

GLEDN is an online system that collects invasive species reports from casual observers, verifies these reports and integrates them with others networks. The system then uses this integrated information to send customized early detection email alerts. Visit apps.bugwood.org to learn more.

Keep an eye out for spotted lanternfly egg masses...Help us spot spotted lanternfly! Contact the Ohio Department of Agriculture at 614-728-6201 or use the Great Lakes Early Detection Network (GLEDN) App to report sightings of this insect!





Beef Quality Assurance Training

Tuesday, January 24th, 2023 7PM

Harrison County Fairgrounds,

550 Grant St., Cadiz, OH

Pre-registration required -

Register by calling 740-264-2212

With consumers concerned for animal welfare and sustainable production, Beef Quality Assurance (BQA) is now required by food giants like Tyson Foods, who work with 25% of the US beef market share, and Wendy's, currently the 2nd largest fast food hamburger chain in the US, beginning in 2019 to meet public demand.

*BQA is not a government mandated program. Contact your livestock sales facility to see if they require or recommend BQA.

Save the Date!

OHIO CATTLEMEN'S ASSOCIATION
**CATTLEMEN'S
ACADEMY** 

Monday, January 30th, 2023

Harrison County Fairgrounds,

550 Grant St., Cadiz, OH

Experts from Ohio State and the cattle industry will be on-hand to instruct attendees and answer questions throughout the clinics. This session will also feature the calving simulator!

Producers will learn: prenatal cow and calf health, bull selection for calving ease, hands-on demos with the calving simulator

Cattlemen's Academy clinics are free for OCA members to attend. Those who are not current OCA members may still attend but must pay \$75 per family upon registration. This cost includes clinic attendance and an OCA membership. A meal is included for each participant at each of the clinics.

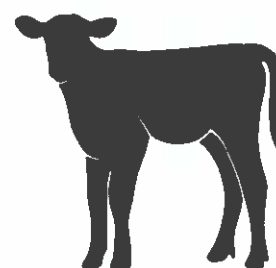
Attendance at each clinic is limited for the in-person programs. Producers should register early, or risk missing out on the chance to take part in this unique learning opportunity for their operations.

Pre-registration required -

Register at <https://ohioca.memberclicks.net/harrisoncountycalvingclinic>

For more information or to register, visit ohiocattle.org or call the OCA office at (614)873-6736.

Calving Clinic



5:30-8PM

**Jefferson
County**

**Discover
Yourself
in 4-H**



JUNIOR LEADERS UPDATE!

Next Meeting!!

Monday, January 30th, 5PM

OSU Extension Office,

**500 Market Street, Suite 512,
Steubenville, OH**

Please enter through the back
doors where the entry is connected
to the parking lot!

Current 4-H Camp Counselors!

Making Extreme Counselors Camp is
Feb. 25-26 in Columbus.

The cost is \$65. If you are interested, email
Allison.325@osu.edu.

We have 6 attending so far. We can send up to 15.
This IS NOT a mandatory training, just an option.
This is available on a first-come, first-serve basis
only.

Partial scholarships for this training are available by
filling out the county-chosen camps form. However,
please still email Angie at the email listed above, if
you are turning in a county-chosen form for the
MXC Camp. Turn around times are short for this
particular camp.

COMMUNITY SERVICE OPPORTUNITIES

- ☒ Support the Jefferson County Kiwanis
Sock Drive, Donate NEW socks of any
size! They can be dropped off at the OSU
Extension Office!
- ☒ Volunteer at the Urban Mission
- ☒ Volunteer at local Nursing Homes/
Assisted Livings/Hospice
- ☒ Jefferson County Fairgrounds Dining
Room Table Donation! (Information on
page 23)

Rabbit Informational Classes

Tammy Mazzaferro will have
rabbit informational classes at 5
pm, January 30, at 500 Market
Street on the 2nd floor in the
community room!

Sessions will be open to all 2023
rabbit exhibitors!

Learn how to show your rabbit,
the parts of a rabbit, care for your
rabbit, the breeds, questions that
judges may ask and more!

No pre-registration required!

Do NOT bring your rabbits!

**Please join Tammy for a great
learning experience!**

For the young folks working dogs this year for fair.
Reminder that your dog should already be in training!

Books started in January.

Last year everyone started very late. Sign up for classes
at Destiny Dog school or Gold Star Kennels

Destiny Dog School – 740-264-7793

Gold Star Kennels – 740-942-3262

**ATTENTION
NEW 4-H
CAMP
COUNSELORS**

It is New 4-H Camp Counselor
application and interview season!

The application complete with
instructions is available for
download on our Facebook page
and in your family email. Those
who apply will be contacted with
interview information. Previous
camp counselors need not reapply,
they have already been contacted.

**Applications must be received at
the OSU Extension office no later
than 4pm, January 20!**

DO NOT email applications.
USPS or hand delivery only!

**Attention parents/guardians/ returning camp counselors and
2023 camp counselor hopefuls,
4-H Camp will be held Sunday, June 4 through Wednesday, June 7, 2023!**

The location for 2023 4-H camp will be Elkhorn Valley in Bergholz, Ohio!

This is a date and location change from previous years. We understand that the new camp dates conflict with some other events. Camp does start in the afternoon on June 4, the same day that horse camp is finishing up. So, some of us will be very tired by Wednesday! These dates also potentially coincide with state leadership camp and Piedmont shooting sports camp! In addition, Contest Day will be moved to June 14. However, to secure this fantastic facility, we had to compromise slightly on the dates. When you review the photos below, we hope you can appreciate the new facility and understand why there are some changes happening.

We wanted to convey this information as soon as possible, so that as you are planning summer vacations with family during the holiday break you can work around these dates! Also, returning camp counselors and new counselors hopefuls, hold Feb. 20 as a training date. We will be meeting at Elkhorn Valley at 9 am. Weather permitting we will tour the facility with the Belmont County camp counselors who are also moving to this location for camp in 2023. (No Belmont is NOT camping at the same time as Jefferson.) We will then split into our county groups to plan our camp as we have done traditionally! Do not fret counselors, you will still be preparing the theme, the t-shirts, the schedule, choosing your meals, naming your cabins/tribes, hiking, enjoying your camp fire activities, swimming, kayaking, playing Octoball etc. But you will also be enjoying a pool with the availability of a counselor night swim, rock wall, high ropes course, low ropes course, movie night, etc!

In the mean time, enjoy the attached photos of the Elkhorn Camp facility. Folks this camp will be provided at no additional charge for 2023. The fees to parents will remain the same as in 2022. (It is important to note: Several potential new camp locations were discussed at the September/October/November 4-H Committee meetings. Elkhorn was first toured by 4-H Committee members in November. Committee members met with the Elkhorn camp manager for a question/answer session. The 4-H Committee then voted unanimously for the location change. The OSU State 4-H office granted final approval for the change in December.)

Let's start getting excited for 2023 4-H Camp!



**More pictures of
Elkhorn Valley
Camp continued
on next page!**



HEALTH! **ROCKS!**

The window decorating theme for 2023 will be ... Health Rocks! 4-H Inspires Healthy Living. This is a national theme and a national curriculum available through the 4-H website. So if you are looking for help with your window, please visit <https://4-h.org/parents/healthy-living/health-rocks/>. This theme speaks to our youth being alcohol, vape and tobacco free. It also speaks to healthy eating and fitness. So, please show us all the ways that your club and club members are inspiring/participating in/ learning about healthy living.



WEEK OF JUNE 11 Paulding County Fair (Paulding) Pickaway County Fair (Circleville)	June 12-June 17 June 17-June 24	Hamilton County Fair (Cincinnati) Henry County Fair (Napoleon) Marion County Fair (Celina) Morrow County Fair (Troy)	August 18-August 19 August 19-August 20 August 20-August 21 August 21-August 22
WEEK OF JUNE 18 Harrison County Fair (Cedar) Putnam County Fair (Ostrander)	June 18-June 24 June 24-June 30	WEEK OF AUGUST 13 Jefferson County Fair (Smithfield) Madison County Fair (Zanesville) Huron County Fair (Norwalk) Mingo County Fair (Pomeroy) Allen County Fair (Lima) Darke County Fair (Greenville) Delaware County Fair (Paris)	August 13-August 14 August 14-August 15 August 15-August 16 August 16-August 17 August 17-August 18 August 18-August 19 August 19-August 20
WEEK OF JULY 2 Marion County Fair (Marion) Clinton County Fair (Washington) Lawrence County Fair (Prestonville) Madison County Fair (London)	July 2-July 8 July 8-July 15 July 15-July 22 July 22-July 29	WEEK OF AUGUST 20 Lorain County Fair (Wellington) Marion County Fair (Hilliard) Sandusky County Fair (Newark) Portage County Fair (Ravenna) Portage County Fair (Ravenna)	August 20-August 21 August 21-August 22 August 22-August 23 August 23-August 24 August 24-August 25
WEEK OF JULY 9 Adams County Fair (West Union) Lorain County Fair (Hilliard) Montgomery County Fair (Dayton) Lucas County Fair (Maumee) Tuscarawas County Fair (Cortland) Jackson County Fair (Wellington)	July 9-July 15 July 15-July 22 July 22-July 29 July 29-August 5 August 5-August 12 August 12-August 19	WEEK OF AUGUST 27 Morrow County Fair (Mt. Gilead) Noble County Fair (Canton) Vernon County Fair (Vernon) Harrison County Fair (Cincinnati) Richmond County Fair (Union Co.) Crawford County Fair (Burlington) Fuller County Fair (Newark) Washington County Fair (Marion)	August 27-August 28 August 28-August 29 August 29-August 30 August 30-September 1 September 1-September 2 September 2-September 3 September 3-September 4 September 4-September 5
WEEK OF JULY 16 Carroll County Fair (Canton) Crawford County Fair (Burlington) Fayette County Fair (Washington C. H.) Franklin County Fair (Williams) Dane County Fair (Oak Harbor) Perry County Fair (New Lexington) Warren County Fair (Lancaster) Clark County Fair (Springfield) Knox County Fair (Mt. Vernon)	July 16-July 22 July 22-July 29 July 29-August 5 August 5-August 12 August 12-August 19 August 19-August 26 August 26-September 2 September 2-September 9	WEEK OF SEPTEMBER 3 Highland County Fair (Hilliard) Berkshire County Fair (St. Clairsville) Harrison County Fair (Harrison) Morgan County Fair (McConnelsville) Adams County Fair (Adams Co.) Wayne County Fair (Woodville) Williams County Fair (Woodville)	Sept. 3-Sept. 4 Sept. 4-Sept. 5 Sept. 5-Sept. 6 Sept. 6-Sept. 7 Sept. 7-Sept. 8 Sept. 8-Sept. 9 Sept. 9-Sept. 10 Sept. 10-Sept. 11
WEEK OF JULY 23 Butler County Fair (Hamilton) Clermont County Fair (Cincinnati) Shelby County Fair (Shelby) Union County Fair (Marysville) Seneca County Fair (Tiffin) Vinton County Fair (McArthur) Lana County Fair (Paris) Summit County Fair (Tallmadge) Ohio State Fair (Columbus) Pike County Fair (Lancaster)	July 23-July 29 July 29-August 5 August 5-August 12 August 12-August 19 August 19-August 26 August 26-September 2 September 2-September 9 September 9-September 16 September 16-September 23	WEEK OF SEPTEMBER 10 Guernsey County Fair (Chillicothe) Hocking County Fair (Logan) Wyandot County Fair (Upper Sandusky) Berkshire County Fair (Richland Co.) Delaware County Fair (Delaware)	Sept. 10-Sept. 11 Sept. 11-Sept. 12 Sept. 12-Sept. 13 Sept. 13-Sept. 14 Sept. 14-Sept. 15 Sept. 15-Sept. 16 Sept. 16-Sept. 17 Sept. 17-Sept. 18
WEEK OF JULY 30 Auglaize County Fair (Napoleon) Greene County Fair (Lima) Pike County Fair (Lancaster) Wood County Fair (Bowling Green) Columbiana County Fair (Paris) Dallas County Fair (Dallas) Madison County Fair (Madison) Athens County Fair (Athens) Champaign County Fair (Athens) Ross County Fair (Chillicothe)	July 30-August 5 August 5-August 12 August 12-August 19 August 19-August 26 August 26-September 2 September 2-September 9 September 9-September 16 September 16-September 23	WEEK OF SEPTEMBER 17 Adair County Fair (Hilliard) Tuscarawas County Fair (Cortland)	Sept. 17-Sept. 18 Sept. 18-Sept. 19 Sept. 19-Sept. 20 Sept. 20-Sept. 21 Sept. 21-Sept. 22 Sept. 22-Sept. 23 Sept. 23-Sept. 24 Sept. 24-Sept. 25
WEEK OF AUGUST 6 Harrison County Fair (Licking Co.) Richland County Fair (Lancaster) Scioto County Fair (Lancaster) Ashland County Fair (Ashland) Adair County Fair (Lancaster) Crawford County Fair (Burlington) Erie County Fair (Sandusky)	August 6-August 12 August 12-August 19 August 19-August 26 August 26-September 2 September 2-September 9 September 9-September 16 September 16-September 23	WEEK OF SEPTEMBER 24 Brown County Fair (Cincinnati) Barlow County Fair (Washington Co.) Crawford County Fair (Cincinnati)	Sept. 24-Sept. 25 Sept. 25-Sept. 26 Sept. 26-Sept. 27 Sept. 27-Sept. 28 Sept. 28-Sept. 29 Sept. 29-Sept. 30 Sept. 30-October 1 October 1-October 2
WEEK OF AUGUST 13 Harrison County Fair (Licking Co.) Richland County Fair (Lancaster) Scioto County Fair (Lancaster) Ashland County Fair (Ashland) Adair County Fair (Lancaster) Crawford County Fair (Burlington) Erie County Fair (Sandusky)	August 13-August 19 August 19-August 26 August 26-September 2 September 2-September 9 September 9-September 16 September 16-September 23	WEEK OF OCTOBER 1 Lancaster County Fair (Lancaster) Lancaster County Fair (Lancaster)	October 1-October 2 October 2-October 3 October 3-October 4 October 4-October 5 October 5-October 6 October 6-October 7 October 7-October 8 October 8-October 9

Livestock Quality Assurance Dates 2023

(Members are allowed to attend ANY LQA opportunity, however you are encouraged to take it as a group)

January 27th – In-person – Overnighter. Pre-registration required by emailing Allison.325@osu.edu. Arrive at Millsop by 9:15 pm. ONLY the youth who is participating in QA will be admitted. ANY members needing to take LQA can attend this session. Adults and other siblings/cousins/4-H youth not needing LQA or who have already completed LQA will not be admitted until 10:45 pm.

February 9th – Zoom Livestock Quality Assurance 7 pm- (Must email Allison.325@osu.edu to register.) Clubs 4-H Varieties, Buckeye Variety Livestock, Banners & Buckles, Appalachian 4-Hers, 43 Ramblers, Broken Fences, Country Classics

February 18th – In-person - Winter Update And Dance – no pre-registration required. ANY members needing to take LQA can attend this session. However, be sure to SIGN IN on the 4-H sign in sheet and stay the entire training for credit.

March 6th – Zoom Livestock Quality Assurance 7 pm- Country Rangers, Country Kids, Country Roadrunners, Country Shamrocks, Cross Creek Tomahawks, The Dirt Diggers, Free Spirits

April 17th – Zoom Livestock Quality Assurance, 7 pm- Friends and Neighbors, Golden Horseshoe, Happy Hooves & Fancy Feathers, Liberty Gals & Guys, Purple Circle, Ribbons & Wranglers, Steubenville City Seedlings, Sunrise Lads N' Lassies, Sunrise Rascals, Town & Country, Warren Ridge Wranglers, Wildwood Critters, Windy Ridge

May 2nd – \$25 Last Chance Quality Assurance-6 pm In-person; as well as, 5 pm Tag pick-up located at the Jefferson County Fairgrounds. ANY members needing to take LQA can attend this session.



2023 4-H OVERNIGHTER



The Overnighter will begin on Friday, January 27th at 11:00 p.m. and end on Saturday, January 28th at 6:00 a.m. at the Millsop Community Center in Weirton

THE OVERNIGHTER IS FOR 4-H YOUTH AGES 9 THRU 18. (NON-4-H MEMBERS CANNOT ATTEND). IF YOU ARE SENDING SOMEONE TO THE OVERNIGHTER THAT IS NEW TO 4-H IN 2023, YOU MUST SEND A COMPLETED ENROLLMENT FORM WITH THE REGISTRATION AND THE NEW MEMBER MUST PAY A \$20.00 SURCHARGE PLUS THE \$10.00 FEE TO ATTEND THE OVERNIGHTER. MEMBERS MUST BE IN CLUB BEFORE DECEMBER 1, 2022 TO BE EXCLUDED FROM THIS NEW SURCHARGE

NOTE: For every five (5) youth registered, you must register one adult!

CLOVERBUDS are permitted at the Overnighter but must be accompanied by a parent for the entire evening. Cloverbud fee is \$5.00

COST: \$10.00 fee for 1st 4-H member of a family attending and \$5.00 for any other 4-H member of the same family attending. There will be a \$5.00 fee for each adult registration.

Checks should be made payable to "Jefferson County 4-H Committee".

\$5.00 late fee will be added to registration fee for anyone registering after the due date of January 20th.

Advisor must approve if you are late to register. There must be 1 adult per 5 kids.....



Payments are due on or before January 20th. Late payments will be taken until Tuesday January 24th before NOON with a \$5.00 late fee. Advisor must approve if you are late to register. There must be 1 adult per 5 kids.....

Absolutely no money will be taken after Tuesday the 24th or on Friday night of the Overnighter.



**Health Form
Are online**

Jefferson.osu.edu

Advisors are to collect the health forms and turn into office by January 20th.

Club Advisors have the Registration Form. You must register with your club. No individual registration forms will be accepted.

ATTENTION 2023 CAMP COUNSELOR
Call Angie or email her
If you would like to help with the overnighter

The Ohio State University, The United States Department of Agriculture and Jefferson County Commissioners Cooperating

CLUB NAME: _____

(If you are registering a Cloverbud, please state the parent's name who will be accompanying them.)

Name: _____ Age: _____

Name: _____ Age: _____

Name: _____ Age: _____

Name: _____ Age: _____

Name: _____ Age: _____

ADULT: _____

Name: _____ Age: _____

Name: _____ Age: _____

Name: _____ Age: _____

Name: _____ Age: _____

Name: _____ Age: _____

ADULT: _____

Name: _____ Age: _____

Name: _____ Age: _____

Name: _____ Age: _____

Name: _____ Age: _____

Name: _____ Age: _____

ADULT: _____

Name: _____ Age: _____

Name: _____ Age: _____

Name: _____ Age: _____

Name: _____ Age: _____

Name: _____ Age: _____

ADULT: _____

CLUB NAME: _____

(If you are registering a Cloverbud, please state the parent's name who will be accompanying them.)

Name: _____ Age: _____

Name: _____ Age: _____

Name: _____ Age: _____

Name: _____ Age: _____

Name: _____ Age: _____

ADULT: _____

Name: _____ Age: _____

Name: _____ Age: _____

Name: _____ Age: _____

Name: _____ Age: _____

Name: _____ Age: _____

ADULT: _____

Name: _____ Age: _____

Name: _____ Age: _____

Name: _____ Age: _____

Name: _____ Age: _____

Name: _____ Age: _____

ADULT: _____

AMOUNT ENCLOSED: _____ 1st youth in family @ \$10.00 per youth = \$ _____
_____ Other family members @ \$5.00 per youth = \$ _____
_____ Adults @ \$5.00 per adult = \$ _____
_____ New member surcharge = \$ _____

TOTAL AMOUNT ENCLOSED: \$ _____

This form must be completed by the **CLUB ADVISOR ONLY** and returned to the Ohio State University Extension Office by January 20th. HEALTH FORMS are online at jefferson.osu.edu or Facebook you can pick one up at the OSUE Office as well.

ADULT ASSIGNMENT SHEET IS ENCLOSED. PICK THE ACTIVITY YOU CAN HELP WITH. RETURN TO OSUE OFFICE W/ CLUB REGISTRATION. FINAL ASSIGNMENT SHEET WILL BE HANDED OUT WHEN YOU ARRIVE FOR THE OVERNIGHTER.

NO YOUTH WILL BE ADMITTED TO THE MILLSOP WITHOUT A HEALTH FORM

Ohio 4-H Health Statement (Overnighter, Camps, and New Members)

ALL SIDES of this form MUST be completed for each participant. Minors must have the form completed and signed by a parent/guardian. This information will be kept confidential and used only for the welfare of the participant. PRINT neatly using blue or black ink.

**PHOTO
REQUIRED!
PLEASE ATTACH
HERE!**
(for identification purposes
only)

Participant/Member Information:

Name: _____			
(Last)	(First)	(Middle)	
Address: _____			
(Street)	(City)	(State)	(Zip)
Home Phone: _____		Club: _____	
Date of Birth: _____		Male <input type="checkbox"/> Female <input type="checkbox"/>	Age (today): _____

Emergency Contact Information:

Parent/Guardian Name: _____	Parent/Guardian Cell Phone: _____
Other Contact: _____	Other Cell Phone: _____
Other Contact: _____	Other Cell Phone: _____
Physician: _____	Physician Phone: _____
Dentist: _____	Dentist Phone: _____

Health History:

Communicable Diseases:	
Provide the date (approximate is acceptable) at which participant has had or was exposed to:	
Chicken Pox _____	Measles _____ Whooping Cough _____
Tuberculosis _____	Mumps _____ Other Communicable Diseases _____
Immunization/Vaccine Record:	
<input type="checkbox"/> To the best of knowledge, the participant is up-to-date on all immunizations which may include, but is not limited to: Diphtheria/Pertussis (Whooping Cough-TDAP), Polio, Measles/Rubella/Mumps (MMR), Haemophilus Influenza (HIB), Varicella (Chickenpox) that are required for school.	
<input type="checkbox"/> The participant has received a Tetanus Booster. Date of last booster: _____	
If the participant is not current or up-to-date with immunizations, please complete the Ohio 4-H Immunization Exemption Form.	

Medical Instructions: Medications/Allergies, Current/Past Medical Conditions:

Current Medications (Prescribed and Over-The-Counter, Current or Past Medical Treatment):
(please list additional medications or needs on a separate sheet)

Name of Medication:	Dosage:	Frequency/Instructions:



Check below if the participant is subject to any of the following conditions:

<input type="checkbox"/> Asthma Controlled? <input type="checkbox"/> yes <input type="checkbox"/> no	<input type="checkbox"/> Bronchitis	<input type="checkbox"/> Cramps	<input type="checkbox"/> Fainting	<input type="checkbox"/> Heart Trouble	<input type="checkbox"/> Seizures	<input type="checkbox"/> Sore Throat
<input type="checkbox"/> Athlete's Foot	<input type="checkbox"/> Constipation	<input type="checkbox"/> Diarrhea	<input type="checkbox"/> Frequent Colds	<input type="checkbox"/> Home Sickness	<input type="checkbox"/> Sinusitis	<input type="checkbox"/> Other?
<input type="checkbox"/> Bed Wetting	<input type="checkbox"/> Convulsions	<input type="checkbox"/> Ear Infections	<input type="checkbox"/> Headaches	<input type="checkbox"/> Kidney Trouble	<input type="checkbox"/> Sleep Walking	

Allergies:

If none, please write NONE here: _____

Food allergies: _____

Medication allergies: _____

Serious Ivy, Oak or Sumac Poisoning: What is the prescribed treatment? _____

Serious bee or insect sting reactions: What is the prescribed treatment? _____

NOTE: If participant's allergy may require use of an "EPI-PEN", then the participant must provide the "Epi-Pen(s)" and discuss possible administration with health care professional upon arrival to camp.

Accommodations for Camp:

Please tell us about the accommodations your child may need at 4-H camp:

- ☐ I will be bringing medications to camp (please describe whether they require refrigeration or special storage below).
- ☐ I have dietary restrictions (describe below).
- ☐ I have limited mobility (e.g. crutches, cane, etc.).
- ☐ I have ADHD or a related attention deficit disorder; a visual, hearing, cognitive processing, reading, or a speech impairment. (describe any needs you anticipate at camp and the accommodations you typically receive at school and home below).
- ☐ I require the use of medical equipment that needs electricity (describe below).
- ☐ I require other accommodations not listed above (describe below).
- ☐ I do NOT require any special accommodations (none of the above apply to me).

Description of any past or current physical, mental, or psychological conditions requiring medication, treatment, or special restrictions or considerations while at camp: _____

Description of any camp activities from which my child should be exempted for health reasons: _____

Instructions for Medications:

All prescription drugs must be carried in the container in which they were issued (with medical orders and physician's name intact) and given to the nurse/health director. Other prescription drugs will not be accepted. Only bring the amount needed for your stay at camp.

If you need regular over-the-counter medications, they must be in the original container. Like prescription medications, these medications must be given to the nurse/health director.

All medications will be given as directed on the original package/container. If there are any dosage adjustments, you must bring signed documentation from your physician.

Check medication(s) that participant may receive if deemed necessary and administered by a health professional. Examples of brand names are given in parentheses. Generic or other name brands may be provided:

<input type="checkbox"/> Acetaminophen (ex: Tylenol)	<input type="checkbox"/> Antibiotic Ointment (ex: Neosporin)	<input type="checkbox"/> Laxative (ex: Milk of Magnesia)	<input type="checkbox"/> Poison Ivy Medicine (ex: Calamine Lotion)
<input type="checkbox"/> Aloe Lotion	<input type="checkbox"/> Cough Syrup/Drops	<input type="checkbox"/> Diarrhea Medication (ex: Imodium)	<input type="checkbox"/> Sore Throat Medicine
<input type="checkbox"/> Antacids (ex: Maalox, Tums)	<input type="checkbox"/> Decongestant (ex: Sudafed)	<input type="checkbox"/> Dramamine	<input type="checkbox"/> Sun Screen
<input type="checkbox"/> Antihistamine (ex: Benadryl, Claritin)	<input type="checkbox"/> Antiseptics		<input type="checkbox"/> Swimmer's Ear Medicine

Emergency Medical and Informed Consent/Camp Program Release

I understand that my child, _____ will be a participant in the Ohio 4-H program and I grant permission for him/her to participate in this program and associated activities with the exception of any restricted activities that I have listed below.

I understand that my child is not required to participate in this program, but grant my permission for him/her to do so, despite the potential risks. I recognize that by participating in this program, as with any physical activity, my child may risk personal injury, paralysis and/or death. I understand program participants will be supervised and acknowledge that the 4-H staff and volunteers, OSUE, The Ohio State University, and the 4-H Camp Site are not responsible for any potential injury or illness resulting from my child's participation. I hereby attest and verify that I have been advised of the potential risks, that I have full knowledge of the risks involved and that I assume any expense that may be incurred in the event of an accident, illness, or other incapacity, regardless of whether I have authorized such expenses.

I understand that most program activities are conducted outdoors and that wearing proper dress (e.g., rain gear, warm clothing) is an essential part of the camp safety rules and procedures. I am aware of and have discussed with my child the established safety rules and procedures.

In the case of serious illness or injury of my child, I understand that I will be notified. If I cannot be contacted, unless otherwise specified below, I grant permission to the attending medical professional to secure proper treatment, hospitalize, and/or take any other action deemed necessary for the immediate care of my child.

In consideration of the opportunity for my child to participate in this program, I, acting for my child, myself and our respective heirs, executors, administrators and assigns, agree to assume any and all risks associated with this activity and do hereby release, indemnify and hold harmless The Ohio State University, its Board of Trustees, OSUE, the Ohio 4-H program, the 4-H camping facility, and their respective officers, agents, and employees from any and all liability, damage, and/or claim of any nature resulting from or arising out of my child's participation in this program and its activities.

Restricted activities and/or special notification instructions: _____

Photo and Video Release

I give permission to The Ohio State University, OSUE, the Ohio 4-H program, and the 4-H camping facility to record and edit into video and/or photographs the likeness, voice, image and video images of my child, _____, and to use all or parts of the video or photographs in print or electronic materials for The Ohio State University, OSUE, the Ohio 4-H program, and 4-H camping facility to promote any and all public awareness for the program(s) in which my child is involved.

Parent/Guardian Printed Name

Parent/Guardian Signature

Date

RESPONSIBILITY CHART

RESPONSIBILITY CHART

Winter Update and Dance

SATURDAY, FEBRUARY, 18TH

DOORS OPEN @ 5PM

5:05 pm - Volunteer/Advisors Training

5:05 pm Cloverbud Camp

5:05 Breakout Sessions:

**Horse Updates - EquiSTEPS and other changes
(this is for all horse youth, not just 1st year horse youth)**

President/Vice President Training

News Reporter Training

Recreation/Historian Training

Health/Safety/Community Service Training

Secretary Training

Treasurer Training

6 pm Breakout Sessions:

**Horse Updates - EquiSTEPS and other changes
(this is for all horse youth, not just 1st year horse youth)**

Livestock Quality Assurance

7:30 pm Dance

8 pm Pizza Is Delivered

9:00pm Clean Up

9:30 pm Out the Door

To sign up for Junior Fairboard watch the Jefferson County Fair Exhibitors and Campers Facebook Page. Add the page if you are interested in fair related updates.

Winter Update

Cloverbud Registration

FEE \$5.00 PER CHILD
DUE BY FEBRUARY 10TH

Club name: _____

Child's name: _____

Parent(s) name: _____

Phone # _____

Food Allergies: _____

See you soon, Leslie Aftanas
(aftanas.2@osu.edu) or 740-264-2212

Bring pop tabs or plastic caps if you have any saved!

OHIO STATE UNIVERSITY EXTENSION

IRON CHEF CLINIC Jefferson County JVS March 25 from Noon-4:00 p.m.

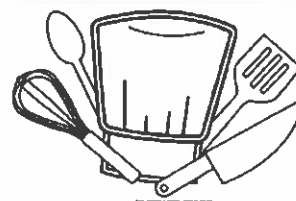
IT'S TIME FOR THE IRON CHEF CLINIC!!!! This great event allows 4-H members to show off their culinary skills. Taken from the TV show with the same name, Iron Chefs prepare dishes using a common main ingredient to see who can come up with the best product. This is your opportunity to show us your culinary skills. **YOUR MENU ITEM: HONEY** As an added addition to our contest, you must design and bring in an educational placemat with information about the honey you use.

Your recipe will be judged in one of 3 categories:

Appetizer, Main Dish or Dessert. Please list your category on the registration form. Categories may be divided into sub-categories based on the number of entries.

4-H clubs competing will prepare a dish **ahead of time and bring** a recipe to serve 2 judges. All dishes will be judged on the attached rubric. You must also bring enough for at least 20 "tastes" for the tasting session following judging and paper/plastic products for serving.

Please be prepared to decorate your table!



Any member interested in joining the fun and participating in this competition is WELCOME!

4-H members can earn points that will apply toward their Honor Member status by participating.

Any guardian/relative/4-H member or club advisor can attend the event, and after judging is complete, tasting will be permitted. "Tasters" will be charged \$1 and will be given 3 tickets to taste 3 different dishes. All proceeds will go to the Jefferson County 4-H Committee to help with future events.

ENTRY RULES:

1.) Your club may enter up to the number of teams you get when you divide the number of members in your club (not Cloverbuds) by 5. You may have one extra team if the number does not divide evenly. If a club has only one person wanting to compete, that youth may join a team from a different club. You may not join a team from another club simply because you do not like someone in your club.

(Example= The Happy Camper 4-H Club is made up of 15 members. They can enter up to 3 teams.

CLUB NAME Happy Camper Club **# OF MEMBERS IN CLUB (not Cloverbuds)** 15

15 Members in Club divided by 5 = 3 (This is the maximum number of teams your club can enter)

If Happy Campers had 18 members who all wanted to participate, they could enter up to 4 teams with the final team having 3 members. (Teams would have 5,5,5 and 3 members). If Happy Campers had 16 members, they could have up to 4 teams with 5, 5, 4 and 2 members or 5, 5, 3 and 3 members (club's choice).

2.) Teams must have at least 2 members, but not more than 5.

3.) Each team may only enter 1 dish in 1 category.

5.) Entry fee is \$5.00 per team.

DEADLINE FOR ENTRIES: March 17, 2023

YOU CAN MAKE A COPY OF THIS PAGE FOR ADDITIONAL ENTRIES:

CLUB NAME: _____ # of Members _____

TEAM 1: Dish _____ Category _____

Name: _____

Name: _____

Name: _____

Name: _____

Name: _____

TEAM 2: Dish _____ Category _____

Name: _____

Name: _____

Name: _____

Name: _____

Name: _____

TEAM 3: Dish _____ Category _____

Name: _____

Name: _____

Name: _____

Name: _____

Name: _____

AMOUNT ENCLOSED: \$5.00 per team = \$ _____

**NO LATE REGISTRATIONS WILL BE ACCEPTED. Advisors please send registration along with entry fee to:
OSU Extension, 500 Market Street, Suite 512, Steubenville, OH 43952**

REGISTRATION DEADLINE: March 17, 2022

If you have any questions, please call Angie @ (740) 264-2212.



TABLES WILL BE ASSIGNED BY THE OSU EXTENSION OFFICE. THERE IS NO NEED TO RUSH THE DOOR.

FOOD SAFETY NOTES:

- You are encouraged to bring one extension cord per team or warm dishes and one food thermometer.
- Dishes hot and cold **MUST** stay out of the temperature danger zone at all times.
- One adult per team must complete the Occasional Quantity Cook training at <https://cfaesosu.catalog.instructor.com/courses/fcs-occasional-quantity-cooks-training-oqc>
The training is required every three years.

Directions to complete the training are included. Email Certificate of Completion to

Allison.325@osu.edu, or mail to 500 Market Street, Suite 512, Steubenville, OH 43952. ALL CERTIFICATES MUST BE RECEIVED BY March 17.

Schedule of Events:

Noon Doors Open
12:30 Welcome and Intro
12:45—3 pm Judging
3-3:30 - Tasting
3:30-4:00 Award Presentations

The Ohio State University, The United States Department of Agriculture and County Commissioners Cooperating

Be sure your participating youth know food safety rules like those discussed in the OQC training, facts about honey, the recipe and more.

CFAES

COLLEGE of FOOD, AGRICULTURAL,
and ENVIRONMENTAL SCIENCES

FCS Occasional Quantity Cooks Training (OQC)

Please follow these directions to access the Occasional Quantity Cooks Online Volunteer Training.

Proceed to <https://cfaes.osu.catalog.instructure.com/courses/fcs-occasional-quantity-cooks-training-oqc>

- Enter the information required:
 - Full name, email, phone number, and postal code.
 - Click the box next to "I agree to the Acceptable Use Policy and acknowledge the Privacy Policy."
 - Click the box next to "I'm not a robot" for the CAPTCHA authentication. Complete the task assigned (select pictures/boxes with bicycles, traffic lights, fire hydrants, etc.)
 - Click on "Enroll in Course" button.
- You will be sent two emails.
 - The "Please confirm your e-mail address" message is required to complete your registration. Click on the "Complete Registration" button. You will be taken to a new website. Your email address is your default username. You will be asked to create a password and select your time zone.
 - Once complete, you will automatically be taken to your Scarlet Canvas Dashboard. Select the FCS Occasional Quantity Cooks Training (OQC).
- Begin the course by clicking on the "Modules" link on the left side of the screen.
 - The first module is "Enter Course Join Code"
 - Enter the Join Code, "OSUEOQCF" (must be all capital letters). Click "Next."

Completing the Course Requirements

- You will need to complete the pages in order. Please watch the video in each lesson and download all accompanying lesson materials. You should plan on spending at least 90 minutes to complete the lessons. Navigate through each lesson's materials using the "Next" button in the lower right corner of the screen.
- From the "Modules" landing page complete the following lessons/sections:
 - Welcome page
 - Pre-Test
 - Lesson 1: Introduction and Background
- Hover your mouse pointer over the bottom of the lesson video black frame to reveal the controls.
 - Lesson 2: Personal Hygiene
 - Lesson 3: Time and Temperature
 - Lesson 4: Cleaning and Sanitizing
 - Lesson 5: Cross Contamination
 - Lesson 6: Special Considerations
 - Lesson 7: Event Management
 - Post-Test
- You must receive a score of 70% or higher to receive a Certificate.
- There is also a section with a lot of resources which may be useful to your programs and events. Please take a moment to review these.
- After you have completed the post-test, the system will email you a link to your Certificate of Completion.
 - Your certificate will be emailed to you within a few minutes. Look for an email message from Canvas Catalog with a subject line of "Congrats on Successfully Completing..."; you may need to check your spam/junk email folder. Print a copy of your certificate of completion.
- When finished, click on "account" on the far-left side of your screen and logout.

Please print a copy of certificate and turn it in to your County OSU Extension Office.

Contact your County OSU Extension Office or e-mail shumaker.68@osu.edu if you experience technological issues or have any questions regarding the training.

You will be emailed a copy of your certificate! Please print a copy and return it to the Jefferson County Extension office OR email a copy to Allison.325@osu.edu.



Rubric for Iron Chef Challenge Competition

Judges: Teams will present their dish with the secret ingredient. They may explain the steps taken, the difficulty of the recipe, how the secret ingredient, honey, was used and how they plated for presentation, and designed the placemat.

- Appearance (Look of Dish, Table Decoration, Plating & Placemat)
- Knowledge (How well did you answer the questions; Do you know about the ingredients)
- Degree of difficulty (of recipe chosen and was there teamwork?)
- Use of secret ingredient (incorporated)

Recipe(s):

CRITERIA	WEIGHT	PROFESSIONAL 25	PRACTITIONER 20	NOVICE 10	BEGINNER 5
Appearance (Plating and placemat)	25%	<input type="radio"/> Food Item(s) arranged neatly and with flair, placemat professional <input type="radio"/> Imagination and creativity were visible	<input type="radio"/> Food item(s) arranged neatly <input type="radio"/> Little creativity used Placemat is included	<input type="radio"/> Food item(s) placed on plate no placemat or poorly done placemat	<input type="radio"/> Little or no planning for plating food no placemat or poorly done placemat
Knowledge	25%	<input type="radio"/> Knowledgeable about the ingredient and recipe	<input type="radio"/> Knowledgeable about product but not process or vice versa	<input type="radio"/> Little knowledge	<input type="radio"/> Unable to answer questions
Degree of Difficulty	25%	<input type="radio"/> Recipe(s) involved many steps, difficulty level was high, teamwork apparent	<input type="radio"/> Recipe(s) involved many steps, but difficulty level was medium, some teamwork	<input type="radio"/> Recipe(s) involved a few steps and difficulty level was low, some teamwork	<input type="radio"/> Recipe was simple to cook/bake, some teamwork
Use of Secret Ingredient	25%	<input type="radio"/> Used secret ingredient and enhances flavor of food item	<input type="radio"/> Used secret ingredient but not very noticeable.	<input type="radio"/> Used secret ingredient but flavor is off completely	<input type="radio"/> Did not use secret ingredient or is not noticeable

Iron Chef

Cloverbud Registration 2023

Ingredient HONEY

Due by March 17th

PLEASE PRINT

Name of Club:

Participants names:

Parent that is taking the Occasional Quantity Cooks Training: (this must be done every year)

(LOOK ON OSU Jefferson County 4-H Facebook page for class) This person will serve the food to guest.

Registration Fee \$5.00 per team (7 or less Cloverbuds will be considered a team.)

The team is to bring a dish with 7 ingredients or less. This dish is to be made up ahead of time and brought to the JVS ready to go. Honey must be used in the recipe as one of the ingredients.

A table will need to be decorated using the theme honey and or the recipe Theme. Plates, bowls, utensils, napkins etc. will also be needed to serve judges and guest. Please make enough for at least 20 people.

Thanks again! If you have any questions, contact Leslie Aftanas at 740-264-2212 or email aftanas.2@osu.edu.

You MUST attach your recipe to this registration form!



2023 POULTRY HATCH DATES/ WEIGHT LIMITS/SALE LIMITS!!!!

- There is a 5 cage limit per exhibitor for poultry at the 2023 Jefferson County Fair!
- As always, only 2 market projects can be taken/sold.
- A youth's parent/guardian or club advisor MUST be present with the youth a poultry weigh in.
- **Poultry/Rabbit tag-in will be held the last Saturday in July. (July 29)**

Geese - All market geese must hatch the week of May 21. (12 weeks prior to fair.) Minimum weight 10 pounds per goose/Maximum weight 15 pounds per goose.

Turkeys - All market turkeys must hatch the week of 4/9/23(18 weeks prior to fair)
Minimum weight 20 pounds per turkey/ Maximum weight 40 pounds per turkey)

Ducks - All market ducks must hatch the week of June 18. (8 weeks prior to fair.)
Minimum weight 5 pounds per duck/ Maximum weight 10 pounds per duck)

Chickens - All market chickens must hatch the week of June 25.(6 weeks prior to fair.)
Minimum weight 5 pounds per chicken/ Maximum weight 10 pounds per chicken)

Questions? call Rick Shell

Calling all horse project youth/guardians - IMPORTANT CHANGES!!!!

Jefferson County Fairboard and Jefferson County 4-H with other counties around the state are implementing new yearly requirements for every horse project youth. The requirements include:

- 1 Horse riding etiquette class per year. This class will cover ring etiquette and behavior outside of the ring. This 1-hour session will answer questions like: What do I do if the rider behind me is bringing their horse too close to mine? My mom works and I cannot be there in time to feed? What are my responsibilities for taking care of my animal while I am at the fair? Etc. (This is a classroom session only. No horses at the etiquette session.)
- 2 required ride days per year. Every member planning to bring a horse to the fair or qualify for state fair must bring the horse identified on the youth member's horse ID form to the Jefferson County Fairgrounds and complete 2 required ride day events. There are no exceptions to this rule. 7 opportunities are listed below. One day = one ride opportunity. All rides must be checked off in-person on the spread sheet at the event by two of the following people Debbie Grimes, Debbie Hukill, Cindy Stingle, Gail Rine, Erin Ogden or Carl Glenn. (This means two people must be in agreement that the horse and rider are safe to ride in a public place.)
- Completion of the EQUISep horse quality assurance class per year.
<https://cfaesosu.catalog.instructure.com/courses/equistep-2023>

Equistep is a self-paced horse quality assurance program like livestock quality assurance. The topics included in EQUISep will change yearly. However, the only option to complete EQUISep is online via the link above. If you do not have access to a computer please call 740-264-2212 to schedule a time to visit the OSU Extension office and utilize an office computer. EQUISep must be completed by June 1. Verification of completion must be turned in with your horse ID, lease forms. (A photo or printed copy of certification which includes date is fine.)

The above requirements must be met to complete a horse project, compete in horse competitions at the Jefferson County Fair and compete at the Ohio State Fair. 4-H horse youth must complete the three items listed above every year. The only horse projects/youth exempt from the above requirements are those which do not require a physical horse such as Horseless Horse, or those members who will not be competing or taking an animal to any fair-related or 4-H Club related events.

Important Horse Dates!

April 15- 7 pm, Mandatory Horse Etiquette/Safety session, Jefferson County Fairgrounds Kitchen - (first option) (This is a classroom session only. No horses at the etiquette session.)

May 24 - 6 pm Horse Ride Day option 1. Also, at 7 pm there will be a make-up class for those who missed the etiquette and safety.

June 2-4 - Horse Camp with in-person horse Skillathon, Jefferson County Fairgrounds. Horse Ride Days Options 2-4 (One ride day can be credited per day of full camp participation. Auditing does not qualify. Official sign off needed at camp to qualify.) Make-up Horse Etiquette Class with time tbd.

June 10 - Horse PAS show (Horse Ride Day option 5)

June 11 - Jefferson County Fairboard Horse Show (Horse Ride Day option 6)

June 28 - Horse Ride Day, Jefferson County Fairgrounds (option 7)
Official check off needed.

No additional make-up days or opportunities will be available, so plan accordingly.

Additional Important STATE Horse Dates:

January 2023

28 - 4-H Advisor/Volunteer Training

March 2023

4 - Hippology, Horse Bowl & Judging Clinic

4 - Communications Contest (Oral)

4 - Year End Achievement Awards Presentation

4 - State 4-H Horse Poster Contest

April 2023

15- State 4-H Horse Bowl Contest

15-State 4-H Hippology Contest

July 2023

7 - Virtual Ohio State Fair Horse Skillathon

17-State 4-H Horse Judging Contest

17-21 - Ohio State Fair Junior Horse Show

20- Ohio State Fair Junior Horse Show - Classical & Western Dressage Show

17- In Person Ohio State Fair Horse Skillathon

August 2023

26 - State 4-H Groom & Clean Contest

September 2023

8-9- State 4-H Competitive Trail Ride

December 2023

2- Ohio 4-H Horse Show Judges Conference



ABC Promise Partnership

ABC Acceptable Caps List NEVER ACCEPTABLE

No Metal	TRASH.....ANY
drink bottles	ALL food containers
prescription bottles	Cardboard Liners
plastic Ziplock type bags	soap pumps
trigger sprayers	lotion pumps
ALL fast food drink lids	grocery bags
Plastic that is not a cap or lid, plastic pieces and parts	Caps or lids with (1) (3) (6) or (7) recycle number
Human or Animal Medical Supplies of any type	K-Cups and Straws
Needle caps	Syringe caps
METAL.....ANY	Plastic toys
	PAPER.....ANY

ACCEPTABLE CAPS

medicine Pill bottle caps/ (info packet removed)	drink bottle caps soda, water, juice caps, sports drink
milk jug, creamer caps	flip-top caps (ketchup)
detergent caps	spout caps (mustard)
hair spray caps	spray paint caps
toothpaste caps	ointment tube caps
deodorant caps	baby food caps
apple sauce pouch caps	shampoo/conditioner caps

ACCEPTABLE LIDS

Cottage cheese yogurt lids	cool whip container lids
mayonnaise jar lids	Pringle can lids
peanut butter lids	coffee can lids
Ice cream bucket lids "under 8" in diameter"	Butter lids
	cream cheese container lids
	Spice lids



Remember!!!

Fair Queen Allison Bell reminds you...

Hey everyone! If anyone has any caps they want me to get, I can meet you somewhere or come pick them up from you just text me. My number is (740) 512-5345. We're going to set up a sorting/weighing time early spring at the fairgrounds to go through all the caps we have collected so far.

Harrison County 4-H Shooting Sports '22-2023 Schedule



ALL MEMBERS MUST HAVE SS PACKET FILLED OUT IN ITS ENTIRETY AND SIGNED BY PARENT/GUARDIAN TO PARTICIPATE.



Saturday, October 15 th	Jewett Sportsman's Club	10-12pm
Thursday, October 20 th	Jewett Sportsman's Club	6-8pm
Saturday, November 12 th	Jewett Sportsman's Club	10-12pm
Thursday, November 17 th	Jewett Sportsman's Club	6-8pm
Saturday, December 10 th	Jewett Sportsman's Club	10-12pm
Thursday, December 15 th	Jewett Sportsman's Club	6-8pm
Saturday, January 7 th	Jewett Sportsman's Club	10-12pm
Thursday, January 19 th	Jewett Sportsman's Club	6-8pm
Saturday, February 11 th	Jewett Sportsman's Club	10-12pm
Thursday, February 16 th	Jewett Sportsman's Club	6-8pm
Saturday, March 4 th	Jewett Sportsman's Club	10-12pm
Thursday, March 16 th	Jewett Sportsman's Club	6-8pm
Saturday, April 8 th	Jewett Sportsman's Club	10-12pm
Thursday, April 20 th	Jewett Sportsman's Club	6-8pm
Saturday, May 13 th	Jewett Sportsman's Club	10-12pm
Thursday, May 18 th	Jewett Sportsman's Club	6-8pm
**June 2 nd -4 th Camp Piedmont Tent. SS Camp		
MONDAY, JUNE 12 th	COMMERCIAL BUILDING	TENT. PROJECT JUDGING
Saturday, July 8 th	Jewett Sportsman's Club	10-12pm
**July 12 th -16 th	Camp Piedmont	Tent. Junior Camp

**LOCATIONS AND DATES ARE SUBJECT TO CHANGE IN ACCORDANCE TO ATTENDANCE
RSVP. ALL MEMBERS ARE ENCOURAGED TO FOLLOW OUR FACEBOOK PAGES FOR
PHOTOS AND LOCAL/STATE UPDATES + OPPORTUNITIES



4-H Shooting Sports

Jefferson and Harrison Counties are partnering again for the 2022-2023 year!

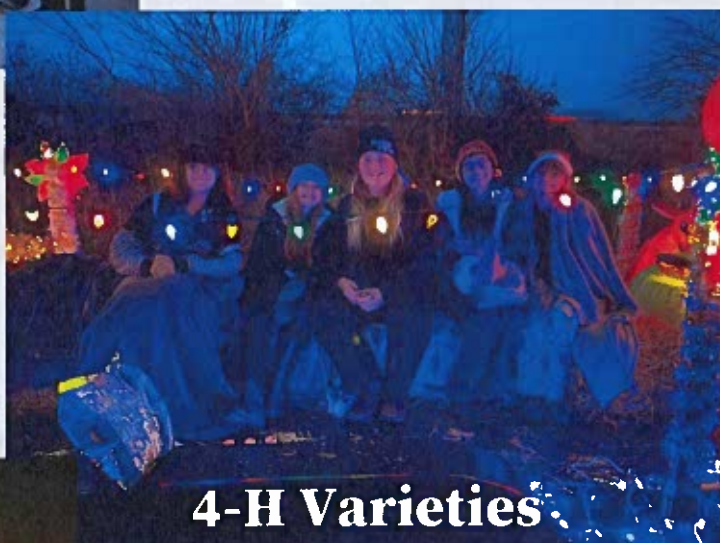
If you would like to stay updated on SS and conservation, like and share our [Harrison County 4-H Shooting Sports Club & Conservation Facebook Page](#) to get the information first!

Mark your calendars!!

Here is the 2022-2023 Harrison County 4-H Shooting Sports Schedule !!

THANK YOU!

To all the clubs that participated in holiday parades and community service. Here are just a few photos that were posted. To see all the photos visit our Facebook page!



4-H Varieties



Warren Ridge Wranglers



Cross Creek Tomahawks

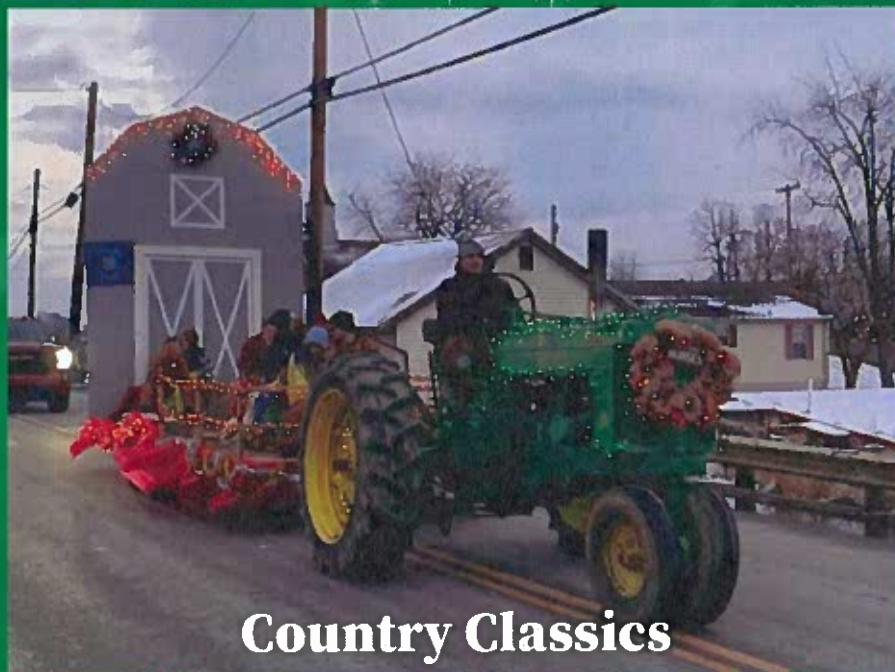


Purple Circle - Wreaths Across America

Jefferson County Fair Queen and Princess



Country Classics



Wildwood Critters



The 2023 Ohio 4-H Spark EXPO will be June 14-17, 2023, on The Ohio State University's Columbus Campus!

What is 4-H Spark Expo?

The 4-H Spark EXPO (Exploring Pathway Opportunities) is an exciting opportunity for youth who have completed the eighth grade at the conclusion of the 2022-2023 school year. There will be four days of fun and learning with activities to explore a variety of career and educational opportunities. Attendees will develop valuable skills, make new friends, and fuel individual growth; and they will get the chance to tour Ohio State's campus. Youth who have completed at least the eighth grade of the current academic year are eligible to attend. Space is limited.

Contact Angie Allison.325@osu.edu to register.



CFAES

JUNE 14-17, 2023

4-H SPARK EXPO

EXPLORING PATHWAY OPPORTUNITIES!

THE OHIO STATE UNIVERSITY
EXTENSION

 go.osu.edu/4hsparkexpo

The Jefferson County Fairboard's sale committee wants to buy new poultry cages! These cages will be used for transportation to the processors. So, they would like to partner with our clubs/parents/supporters in a buy one, jcsc buys one campaign! Any donating club/guardian/supporter will have their name/message engraved on a plaque and added to the side of the cage. Please see information below! Questions can be forwarded to Marlene Lamantia.



BUY ONE, JCSC BUYS ONE

\$60 per cage. Name plaque will be on side of cage.

Checks payable to: Jefferson County Sale Committee

Send donations to: Marlene Lamantia
417 County Road 42
Toronto, OH 43964

Questions or comments call Marlene at (740)632-1518

Forms and donations due by March 1st

For every cage that you buy, Jefferson Co Sale Committee will match.

Name _____

Name/Phrase for Plaque: _____

Amount enclosed: _____
Checks payable to: Jefferson County Sale Committee

Thank You for your contribution!

The Jefferson County Fairboard is updating the fairgrounds dining room/kitchen!

This facility facelift is being completed by Fairboard officers Lori Vinci and Debbie Grimes! However, the dining room needs new, matching tables! The Fairboard is asking all 4-H clubs to "sponsor a table!" The preferred 8-foot table is \$90! So, donation checks can be made out to the Jefferson County Fairboard. Please write on the memo line - dining hall table project. The Fairboard will order the tables. Any help is appreciated and this can be one of your club's community service projects for the 2023 year! If every club sponsors a table, the dining hall will be full of new white, industrial-grade folding banquet tables to help brighten up the space!

Send your club's \$90 check to the Jefferson County Fairboard, PO Box 2315, Wintersville, OH 43953.

To make a personal donation to the tables or the project overall contact Debbie Hukill.



CFAES

DATES

Jan. 24, 2023

Feb. 28, 2023

Mar. 28, 2023

TIME

7:00–8:30 p.m.

**Via Zoom
Webinar**



**THE OHIO STATE
UNIVERSITY**
EXTENSION

OSU EXTENSION PRESENTS

Starting a Food Business

What you need to know about selling your home-based and farm-raised foods

Join us for three webinars to help you start your food business!

1

Start-Up Basics

Jan. 24

What do you want to sell? We'll explain food safety, licensing, legal, and economic considerations for starting to sell your food products.

2

Selling Home-Based Foods

Feb. 28

Learn about food product development, Ohio's Cottage Food and Home Bakery laws, and requirements for selling canned foods.

3

Selling Meat and Poultry

Mar. 28

A look at the economics of selling meat and poultry, meat processing options, and labeling and licensing laws for meat and poultry.

Webinar Faculty

Nicole Arnold, OSU Food Safety Field Specialist

Peggy Kirk Hall, OSU Agricultural Law Field Specialist

Emily Marrison, OSU Family & Consumer Sciences Educator

Garth Ruff, OSU Beef Field Specialist

For details and registration, visit go.osu.edu/foodbusiness



Jefferson & Harrison Counties Present

MarketReady Workshop Series

Wednesdays

February 1, 8, 15 and 22

7-8 PM

MarketReady is a comprehensive educational program that prepares food producers to sell directly to consumers and wholesale buyers. The Ohio MarketReady Team provides professional education to improve marketing planning and marketing relationships. MarketReady workshops and resources guide producers through the decisions needed for entering various direct marketing channels.

There is no cost to participate, but space is limited. Call 740-264-2212 or email lyon.194@osu.edu for the session Zoom links.



THE OHIO STATE UNIVERSITY
EXTENSION

CFAES

TOPICS INCLUDE:

Reaching Your
Customers

.....

Selling at Roadside
and Farmers Markets

.....

Working with
Restaurants

.....

Producing for Farm-
to-School Programs

.....

Developing Your
Plan

CONTACT:

Erika Lyon

740-264-2212

lyon.194@osu.edu

.....

CFAES provides research and related educational programs to clientele on a nondiscriminatory basis. For more information, visit ohioextension.osu.edu. For an accessible format of this publication, visit www.osu.edu/accessibility.



CFAES

FAFSA IS FOR YOU

Did you know \$111 million goes to waste if it is not claimed for post-secondary education opportunities? Ohio 4-H is partnering with the Ohio Department of Higher Education to help answer the most asked questions about the Free Application for Federal Student Aid (FAFSA)!

It is NEVER too early to start preparing- no matter what career pathway students take after high school!

January, 12, 2023 • 6-7 p.m. • Virtual

Register here: <https://go.osu.edu/fafsa4u>



THE OHIO STATE
UNIVERSITY

EXTENSION



EVENT SPONSORS

FAFSA
IS FOR
YOU

Ohio

Department of
Higher Education

Mike DeWine, Governor
Randy Gardner, Chancellor

College of Food, Agricultural,
and Environmental Sciences

4-H is a registered trademark and service mark of the National 4-H Council. For more information, visit www.4-h.org. For an additional form of this publication, visit www.4-h.org.

CFAES

During these 4-session virtual workshops, we use Active Parenting curriculum to introduce you to tools that may help you to raise responsible, confident children, and to navigate through issues that many parents struggle with.

Each workshop focuses on a different age range, allowing you to customize your experience to fit the ages of your children. You are welcome to participate in more than one workshop.



JOIN YOUR BLAST OFF FLIGHT CREW:

Joseph Maiorano and Chris Kendle as they provide strategies to **LAUNCH** your parenting skills into a successful future!

Active Parenting; First Five Years

This workshop is for parents of children, birth to age five. You will learn how to use freedom and non-violent discipline strategies to nurture your child.

Sept 12, 13, 14, 15 Time: 9-11am
Dec 12, 13, 14, 15 Time: 12:30-2:30pm
March 13, 14, 15, 16 (2023)
Time: 9-11am

Active Parenting; Ages 5 - 12

This workshop focuses on helping parents raise responsible children who are able to resist negative peer pressure.

Oct 10, 11, 12, 13 Time 9-11am
Jan 9, 10, 11, 12 (2023)
Time: 12:30-2:30pm
April 10, 11, 12, 13 (2023)
Time: 9-11am

Active Parenting; The Teenage Years

This workshop focuses on helping parents raise responsible confident tweens and teens. Teen issues such as self-esteem, technology, drug and alcohol use, bullying, and risk prevention strategies are discussed.

Nov 7, 8, 9, 10 Time: 9-11am
Feb 13, 14, 15, 16 (2023)
Time: 12:30-2:30pm
May 8, 9, 10, 11 (2023) Time: 9-11am

Pre-Registration is required for each workshop. The cost of a 4-session workshop is \$30.

Once payment has been received, you will receive a book and workbook in the mail.

Upon completion of all 4-sessions, you will receive a \$25 gift card.

Parents associated with the **Head Start** program attend for free
(but do not receive a gift card)

Please go to the following link to register: <https://go.osu.edu/blastoffregistration>

Joseph Maiorano, PhD (FCS Educator) OSU Extension, Harrison County (maiorano.2@osu.edu)



THE OHIO STATE UNIVERSITY
EXTENSION

fcs.osu.edu

— We Sustain Life —

CFAES provides research and related educational programs to clientele on a nondiscriminatory basis. For more information, visit cfaesdiversity.osu.edu. For an accessible format of this publication, visit cfaes.osu.edu/accessibility.



Leslie Aftanas

**J-Fit Activities and
Cloverbud**

Help someone shovel
snow.

Snowflake bead

Make some vegetable
soup for family or
neighbor.

Broccoli bead.

Don't walk slow like a
penguin but go for a
winter walk and enjoy
the great outdoors.

Penguin bead

LESLIE'S CORNER

Cloverbud and J-Fit



Happy New Year

It's time to enroll. All Cloverbuds are to sign-up for book 715. We will have a gathering though out the year. Please watch my page to stay in touch with what is going on. January, we have overnigher with lots of fun things for the kiddo to do. February we will meet at the Winter Update with more fun things to do.

January and February bead activities

Build a snowman with carrot and all.

Snowman bead

Read a winter themed book. Glow in the dark book. Make snow angle and look at the night stars.

Glow in the dark book.

Use spray bottle and food color and make the yard colorful. Green for 4-H.

Thumbs up bead

**KEEP COLLECTING TABS FOR RONALD MCDONOLD HOUSE. YOU
CAN MAKE THIS A CLUB ACTIVITY EVER**

Dates to remember for Cloverbuds

January 27th overnigher

February 11th winter update must register and pay ahead of time \$5.00

February text photo with name for window Leslie will be making.

Leslie's Cell 304-479-3710

March 6th till the 11th check out window for cloverbuds at Big Lots.

March 24th Iron Chef (Honey is the ingredient) can make anything with 7 ingredients or less.

April enjoy family and Easter Break

May is last month of school no 4-H activities

June 3rd Cloverbud Horse camp 11-1pm We will be playing and have fun learning to rope and other games

June 14th Contest Day 530 till 7 for cloverbuds will have plant a boot, resight 4-H pledge, and some other fun activities.

August 14th is Cloverbud Camp

September no activities

October 14th Fall Fest Truck or Treat plus much more.

See You Soon

Practice your 4-H Pledge

**If you have any questions, please feel free to contact me at
aftanas.2@osu.edu or call the office 740-264-2212**

2023 4-H and Youth Development Calendar

This is the tentative 4-H Calendar for 2023, as we know it now. Please understand that these dates can change based on many factors. We will try to keep the dates as is, but you are encouraged to revisit this calendar in each newsletter. Also, check our Facebook page regularly for changes/additions.

January

Jan. 1 - Club enrollments open in 4-H online. The link to access your old account at <https://v2.4honline.com/#/user/sign-in> If you are new to 4-H, use the same link to create a new account.

Jan. 7 - Shooting Sports in Harrison County

Jan. 9 - Accepting new 4-H applications at Schiappa Library from 2-4pm, 7-8 pm
Toronto Library

Jan. 10 - 4-H Committee meeting 7 pm, Extension office

Jan. 14 - OFMA Ohio Junior Fair Conference. Preregistration was required.

Jan. 15 - Ohio State Fair Beef DNA Kits due

Jan. 16 - Martin Luther King Jr. Day - Office closed

Jan. 19 - Shooting Sports in Harrison County

Jan. 20 - 4-H new camp counselors and county chosen camp applications due

Jan. 20 - Overnighter reservations due from advisors with health forms

Jan. 23 - Accepting new 4-H applications from 11-12am at Brilliant Library,
Tiltonsville Library 1-2pm, Dillonvale 3-4pm, Adena 5-6pm.

Jan 27 - Overnighter at Weirton Millsop Center. Admission starts at 10:45 pm, unless preregistered for Quality Assurance.

Jan. 28 - Horse Advisors Training in Columbus

Jan. 30 - Subcommittee 6pm still project and small animal, horse 7 pm, Livestock 8pm/Junior Leaders(5pm)/Rabbit Informational classes(5pm)

Jan. 30 - NEW camp counselor interviews, 6:30 pm, 2nd floor of OSU Extension office building. Returning camp counselors do not attend.

Jan 31 - Advisors virtual training 7pm - The link will be on FB for easy access. It will also be emailed to all head advisors. Head advisors please forward to your assistants and volunteers.

Jan. 31 - All 2022 4-H Club financial forms due

February

Feb. 1 - Announcement of County-Chosen camps representatives

Feb 9 - Zoom Livestock Quality Assurance 7 pm (Must email Allison.325@osu.edu to register.)

Feb. 11 - Shooting Sports in Harrison County

2023 Calendar, continued

Feb. 16 – Shooting Sports in Harrison County

February 18 – Winter Update and Dance 4-9pm (This includes in-person Livestock QA. Please remind all members that they MUST sign the 4-H sign-in sheet at the door of the LQA room with your club's name, in order to, get credit.)

February 20- Mandatory Camp Counselor Training at Elkhorn Valley Camp, 8200 County Road 55, Bergholz, OH, 43908. To be held from 9 am- 3pm.

February 25-26 – Making Extreme Counselors Camp in Columbus

March

March 4 - Shooting Sports in Harrison County 10 am – 12 pm.

March 4 – State hippology, Horse Bowl, & Horse Judging clinic

March 4 – State horse communications contest

March 4 – State horse year-end achievement awards presentation

March 4 – State horse poster contest

March 5 - Window Decorating in place by midnight, judging starts the next day.

March 5 – 11 – Ohio 4-H week

March 6 – Zoom Livestock Quality Assurance email Allison.325@osu.edu for the link

March 11 – Ohio 4-H Volunteer Conference, Columbus

March 16 – Shooting Sports in Harrison County – 6-8 pm

March 14 – 4-H Committee meeting 7 pm, Extension office

March 15 – Last day for enrollments for Honor Club

March 17 – Last day to turn in Iron Chef registrations

March 25 – Iron Chef – Honey special ingredient

March 27 – Junior Leaders 5 pm Extension office, Rabbit class 5 pm. 2nd floor office building, Still project/small animal subcommittee 6 p.m., Horse subcommittee 7 pm, Livestock subcommittee 8 pm, Extension office

March 29- April 1 – Ohio Spring Dairy Expo, Ohio Exposition Center

April

April 10-May 1 – Tag pick-up Monday-Friday, 8 am -3:30 pm, OSU Extension office. (Tags also available from 6-8 pm on April 15 at the fairgrounds and at 5 pm on May 2 at the fairgrounds.)

April 14 – Dairy Palooza

April 15 – Last day for 4-H enrollment NO Honor Club

2023 Calendar, continued

April 15 – State horse bowl/hippology

April 15 – Tag pick up at the fairgrounds 6-8pm.

April 17 – Zoom Livestock Quality Assurance, 7 pm, Email Allison.325@osu.edu to receive the link

April 28-30 – Forestry Wildlife Camp

May

May 1 – Last add/drop day for 4-H projects

May 1 – Most Outstanding Exhibitor achievement form and cover letter due to OSU Extension by 4 pm. Reminder MOE contestants are required to complete in-person Skillathon.

May 1 – Jefferson County online Skillathon opens

May 2 – 6 pm In-person \$25 Last Chance Quality Assurance/ 5 pm Tag pick-up located at the Jefferson County Fairgrounds

May 6 – Tag-in for hogs, lambs, market goats, dairy feeders, dairy beef feeders

May 6 -7 – Counselors primitive camp training. (The evening of the 6th and half a day the 7th) This is recommended not required and will work toward the required counselor training hours.

May 9 – 4-H Committee, OSU Extension

May 12 – Last day to register for Jefferson County 4-H Camp. No reservations will be accepted past this day whether received by mail or in-person. Also, all money for camp must be paid by this date.

May 29 - March 27 – Junior Leaders 5 pm Extension office, Rabbit class 5 pm. 2nd floor office building, Still project/small animal subcommittee 6 p.m., Horse subcommittee 7 pm, Livestock subcommittee 8 pm, Extension office

June

June 1 – All Horse, Pet and Breeding Rabbit, Dog ID, and associated paperwork due to OSU Extension office. Also, online Skillathon opens, 4-H Club activity and book fees due.

June 1-5 - State leadership camp, Camp Ohio

June 2-4 – Horse Camp with in-person horse Skillathon, Jefferson County Fairgrounds

June 3 – Cloverbud Horse Camp, 2-4 pm Jefferson County Fairgrounds. Open to all Cloverbuds.

June 2-4 – Piedmont Shooting Sports Camp, tentative hold dates

June 4-7 – Jefferson County 4-H Camp, Elkhorn Valley, Bergholz

2023 Calendar, continued

June 9-11 – Special Needs Camp at Canters Cave

June 10 – Horse PAS show

June 11 – Jefferson County Fairboard Horse Show

June 11-16 – Camp Canopy Forestry Camp, Carroll County

June 12-14 – In-person Jefferson County Skillathon at OSU Extension office building, 2nd floor meeting room. Required for Most Outstanding Exhibitor contestants. Monday noon – 4 pm, Tuesday and Wednesday 8am-4pm. (No in-person horse on these dates. In-person horse Skillathon will be held at horse camp.)

June 14 – Contest Day, 5 pm Jefferson County Fairgrounds

June 14 – Contest Day Cloverbud Camp, 6:00 pm Jefferson County Fairgrounds

June 18 – 23 – Washington Focus 4-H Camp

June 18 – 4-H Space Camp tentative hold week

June 19 – 20 – State STEM Camp

June 20 – Ohio State Fair livestock entry deadline

June 23 – 25 – Junior Shooting Sports Camp, Canters Cave

June 30 – Jefferson County online Skillathon closes.

July

July 7 – Virtual Ohio State Fair Horse Skillathon

July 8 – Project Judging Day

July 9 – 14 – Senior Shooting Sports Camp, Canters Cave

July 10 – Fair entries due

July 15-19 Sea Camp, Lake Erie, tentative hold dates

July 17 – State 4-H Horse Judging Contest

July 17 – In-Person Ohio State Fair Horse Skillathon

July 17 – 21 Ohio State Fair Junior Horse Show

July 20 – Ohio State Fair Horse Show – Classical and Western Dressage Show

July 26 – Aug. 6 – Ohio State Fair

August

August 13 – Jefferson County 4-H Awards

August 14 – Cloverbud Camp 12-3pm

August 14 – Jefferson County Fair Opening Ceremonies

August 14-20 - Jefferson County Fair

August 26 – State 4-H Groom & CleanContest

2023 Calendar, continued

September

September 8-9 – State 4-H Competitive Trail Ride

September 14 - Most Outstanding 4-H'er applications due

October

October 2 – Most Outstanding 4-H'er interviews

December

Dec. 2 – Ohio 4-H Horse Show Judges Conference

**ATTENTION
VOLUNTEERS
& ADVISORS!!!!**

**Advisor training is required for all
fingerprinted volunteers and advisors.**

Choose your mode: zoom or in-person.

Training dates:

**Zoom – 7pm., Jan 31 – Link will be available on
the Facebook page and will be emailed
countywide**

**In-person – Feb 18 - Winter Update and Dance,
Jefferson County JVS**

JANUARY

- 1/09 Pesticide and Fertilization Exam, 9AM-1PM, Jefferson County
- 1/11 2023 OSU Beef Team Virtual Beef School, 6PM
- 1/24 Beef Quality Assurance, 7PM, Harrison County
- 1/26 Eastern Ohio Grazing Council, TBA
- 1/30 Calving Clinic, 5:30PM-8:30PM, Harrison

See Pages 41-45 for
the 2023
4-H and Youth
Development
Calendar

FEBRUARY

- 2/01 Are you Market Ready Zoom, 7PM-8PM
- 2/06 Pesticide and Fertilization Exam, 9AM-1PM, Harrison County
- 2/08 Are you Market Ready Zoom, 7PM-8PM
- 2/08 2023 OSU Beef Team Virtual Beef School, 6PM
- 2/13 Pastures for Profit, Part I, 6PM-9PM, Harrison
- 2/15 Are you Market Ready Zoom, 7PM-8PM
- 2/22 Are you Market Ready Zoom, 7PM-8PM
- 2/23 Eastern Ohio Grazing Council, TBA

• Dates Subject to Change



ACCESS TO ALL 2022 JEFFERSON
COUNTY 4-H ID FORMS,
REGISTRATIONS, LINKS, AND
INFORMATION PACKETS CAN BE
FOUND ON OUR [FACEBOOK](#) PAGE
AND [WEBSITE](#)!

Visit jefferson.osu.edu or join the Agriculture & Natural Resources Group on our Facebook page @JeffCoExtension for updates and future webinars, podcasts, and other great opportunities!

Ohio State University Extension Jefferson County greatly appreciates the support of the Jefferson County Commissioners: Dave Maple, Jr., Tony Morelli, and Eric Timmons.

Ohio State University Extension embraces human diversity and is committed to ensuring that all research and related educational programs are available to clientele on a nondiscriminatory basis without regard to age, ancestry, color, disability, gender identity or expression, genetic information, HIV/AIDS status, military status, national origin, race, religion, sex, sexual orientation, or veteran status. This statement is in accordance with United States Civil Rights Laws and the USDA.

