

Rabbit

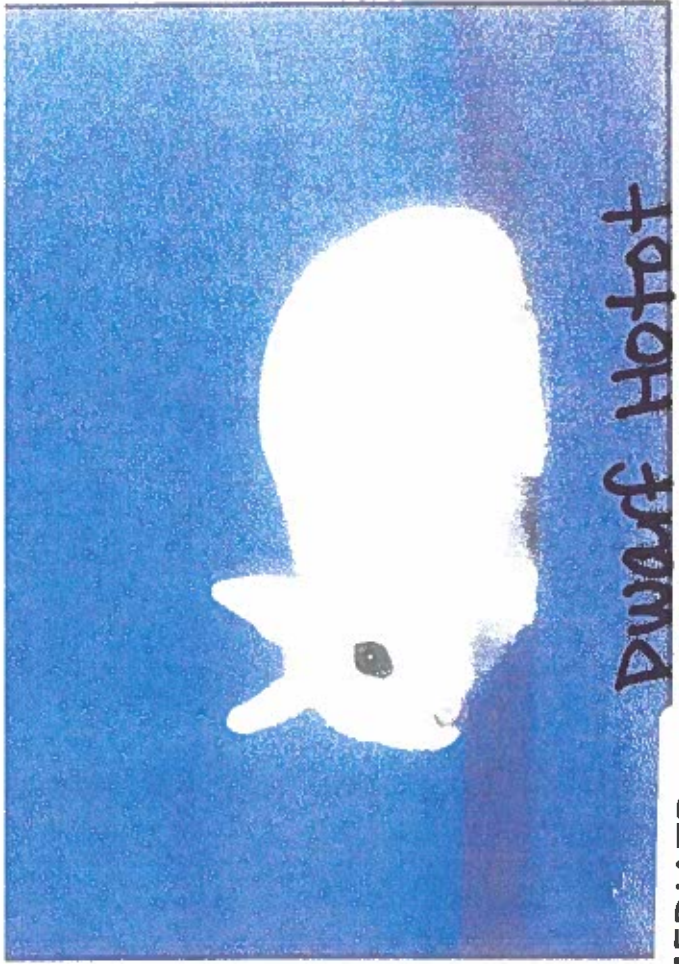
Intermediate

Station 1

Breeds



English Lop



Dwarf Hotot

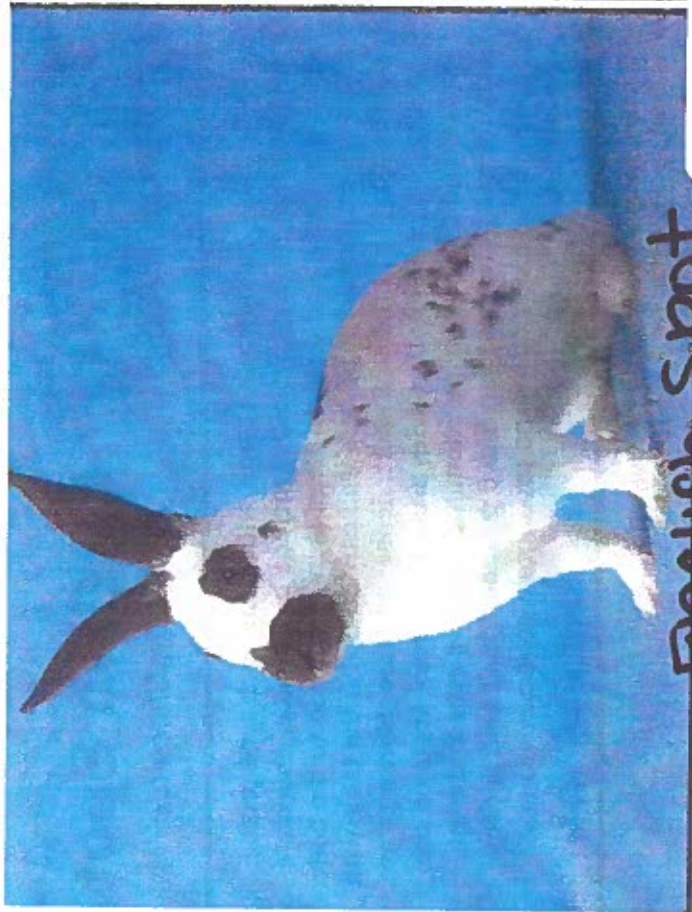
INTERMEDIATE
BREEDS



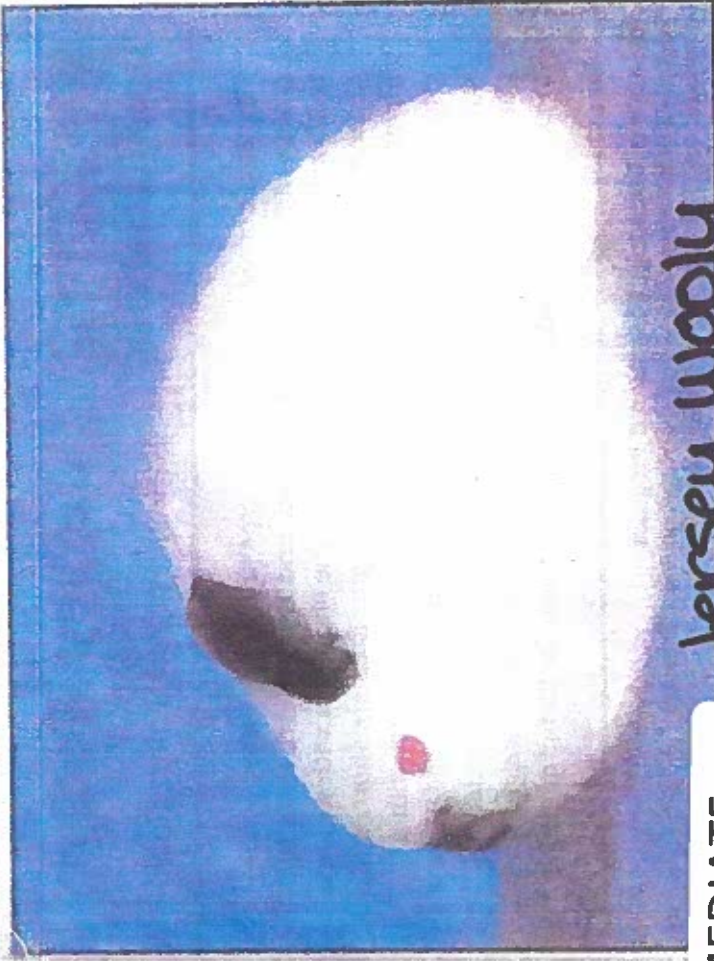
Belgian Hare



Flemish Giant



English Spot



Jersey Woolly

INTERMEDIATE
BREEDS



English Angora



Himalayan



French Angora



Harlequin

INTERMEDIATE

BREEDS

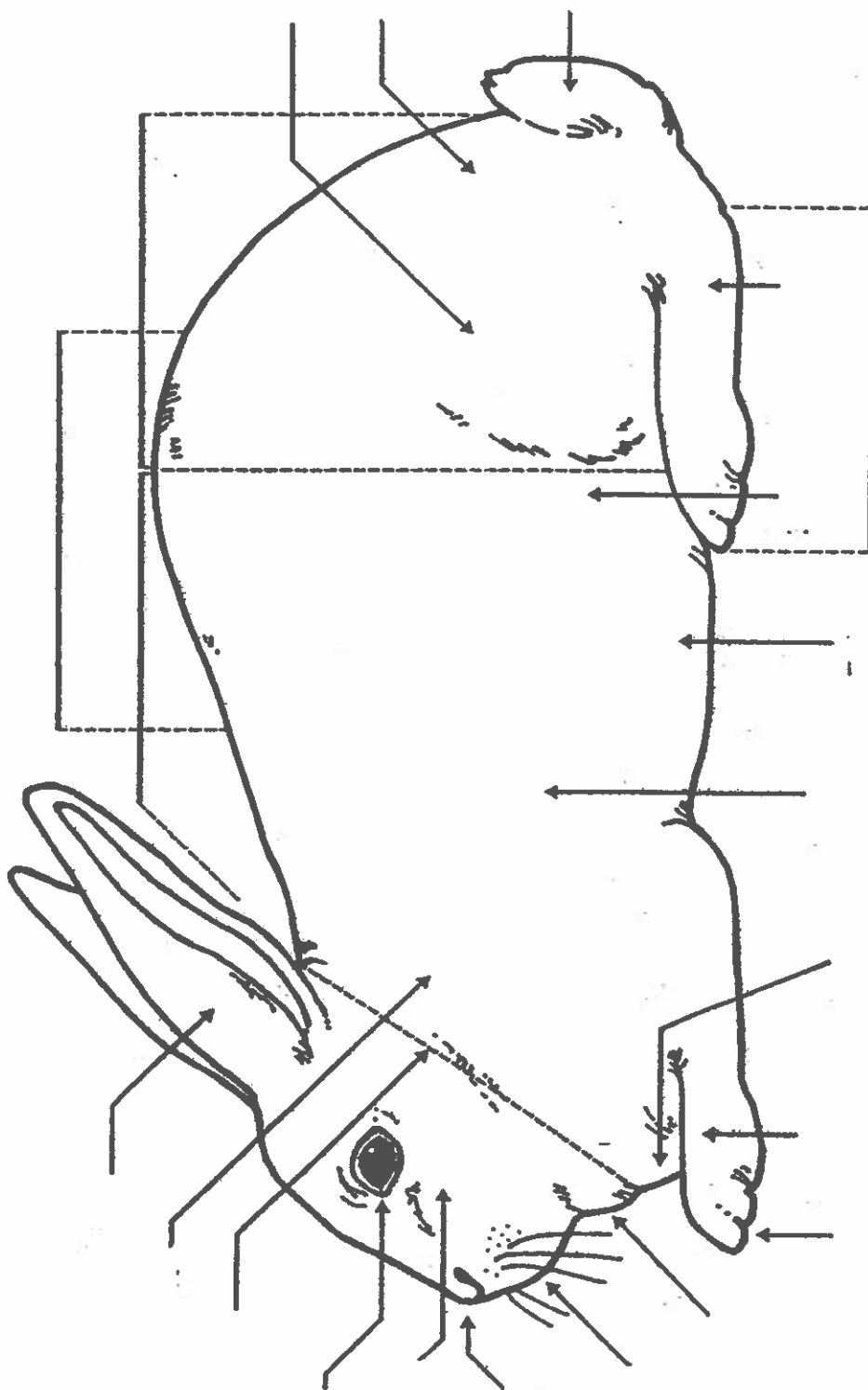
Intermediate

Station 2

Parts

Use this poster in conjunction with Anatomy - Match the names to the correct parts of the rabbit situation/task statement and/or Parts of a Rabbit Identification tags.

Parts of a Rabbit



RABBIT
LEARNING LABORATORY KIT

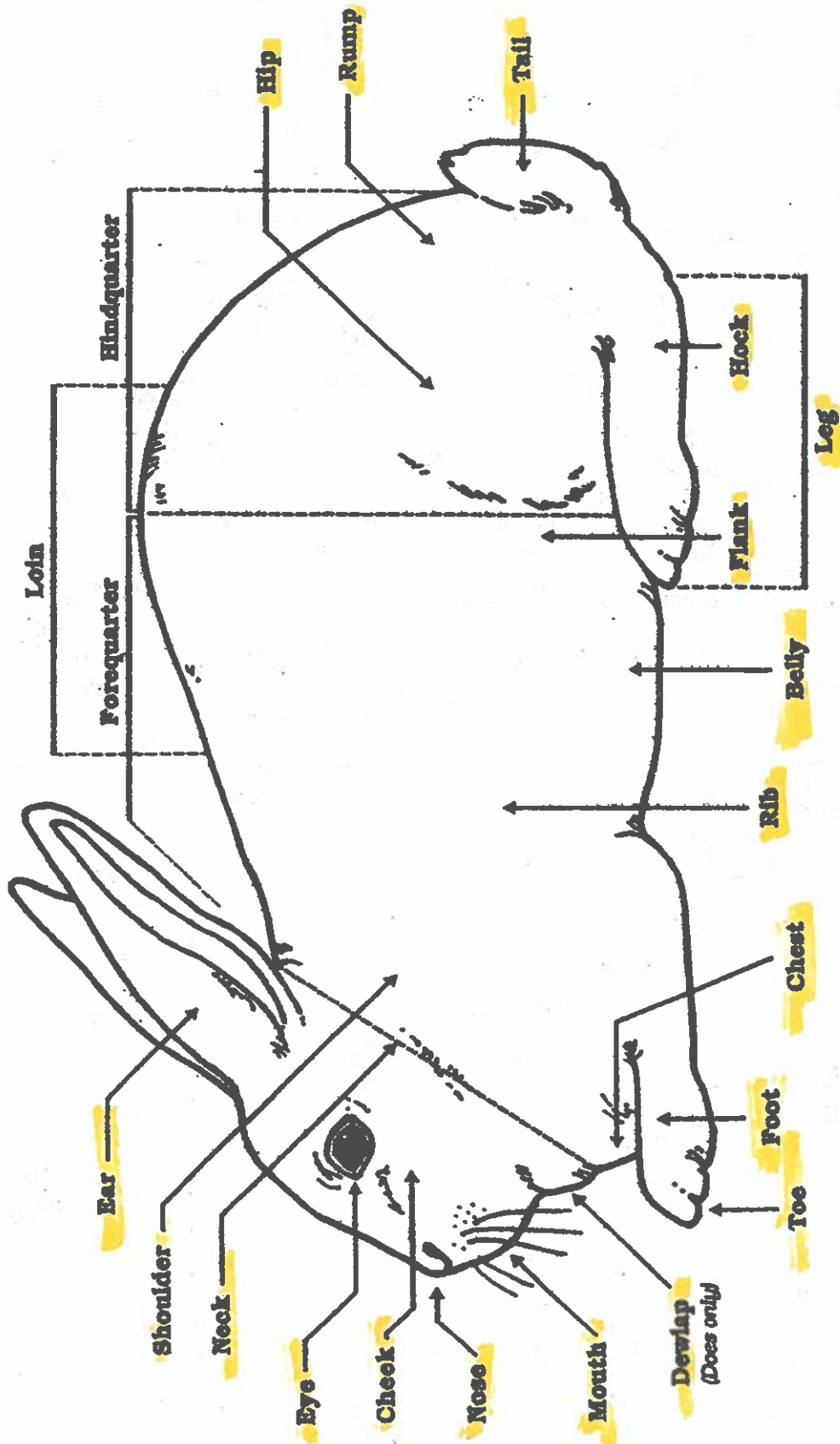
Exploratory Learning: Educational Program

This component adapted from materials found in *Raising Rabbits!*
© The Ohio State University, 1988 • Ohio State University Extension 4-H Youth Development.
Graphic property of Curriculum Materials Service.

Product distribution through the Curriculum Materials Service

Use this poster in conjunction with Anatomy - Match the names to the correct parts of the rabbit situation/task statement and/or Parts of a Rabbit Identification tags.

Parts of a Rabbit



Exploratory Learning: Educational Program

This component adapted from materials found in *Raising Rabbits I*
 © The Ohio State University, 1985 - Ohio State University Extension 4-H Youth Development.
 Original property of Curriculum Materials Service.

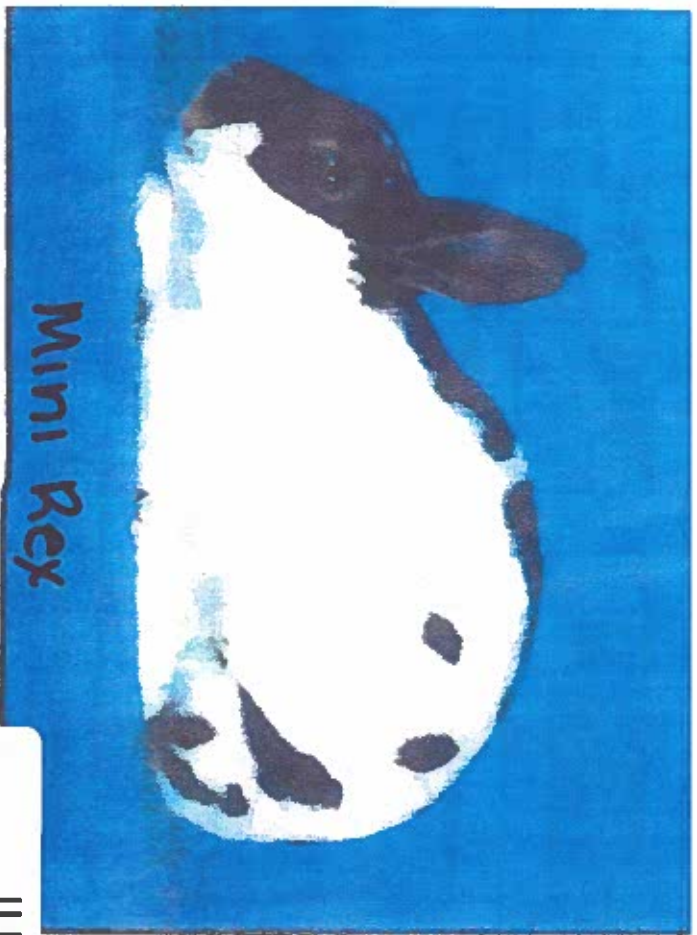
Product distribution through the Curriculum Materials Service

RABBIT
 LEARNING LABORATORY KIT

Junior

Station 1

Breeds



Mini Rex



New Zealand

JUNIOR
BREEDS



Silver Marten



Holland Lop



Champagne d'Argent



Californian

JUNIOR
BREEDS



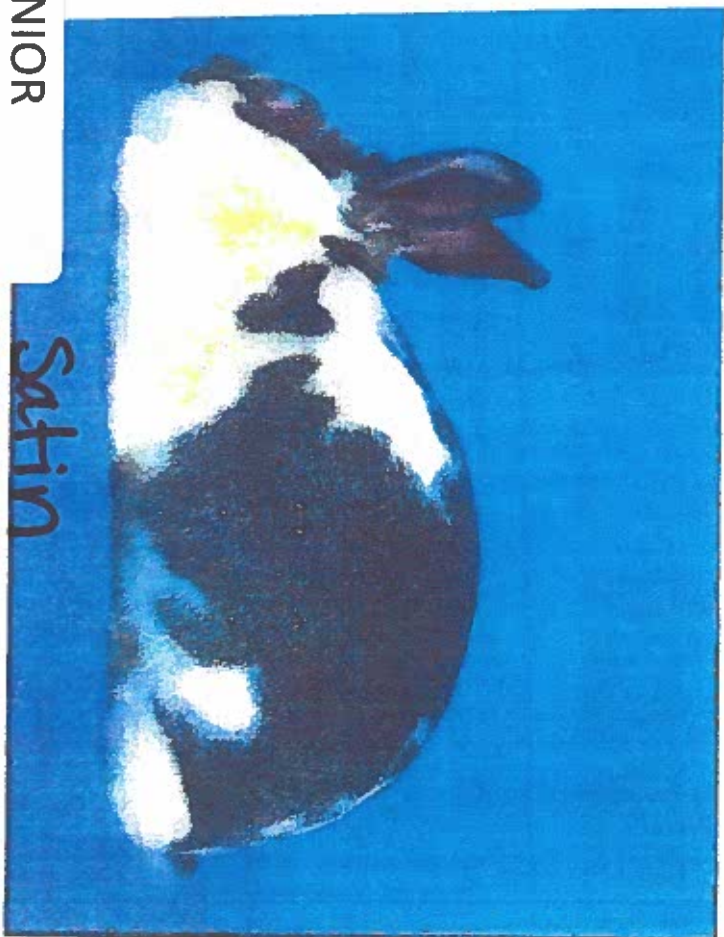
Checkered Giant



Dutch



Creme d'Argent



Satin

JUNIOR
BREEDS

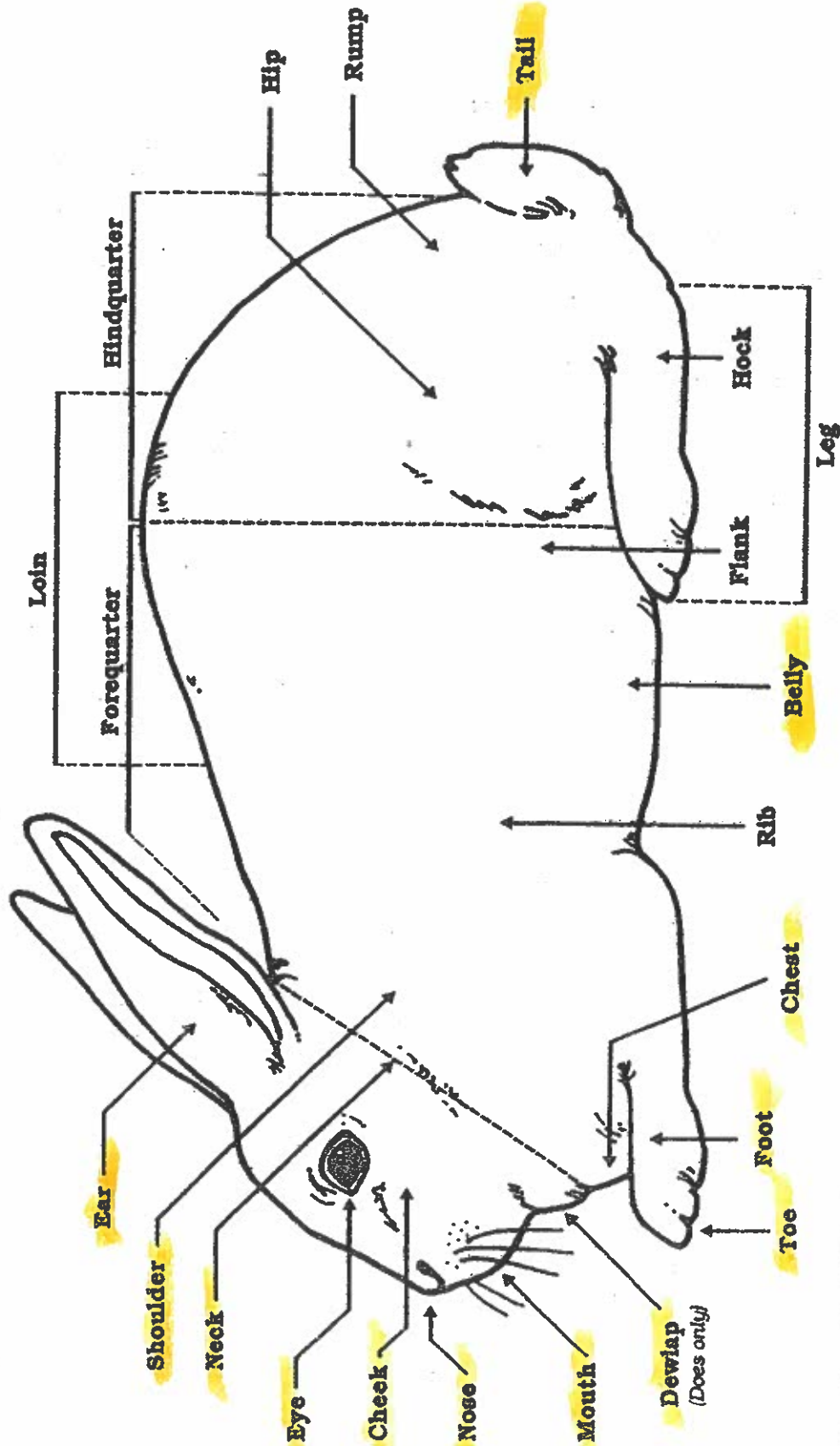
Junior

Station 2

Parts

Use this poster in conjunction with Anatomy - Match the names to the correct parts of the rabbit situation/task statement and/or Parts of a Rabbit Identification tags.

Parts of a Rabbit



RABBIT
LEARNING LABORATORY KIT

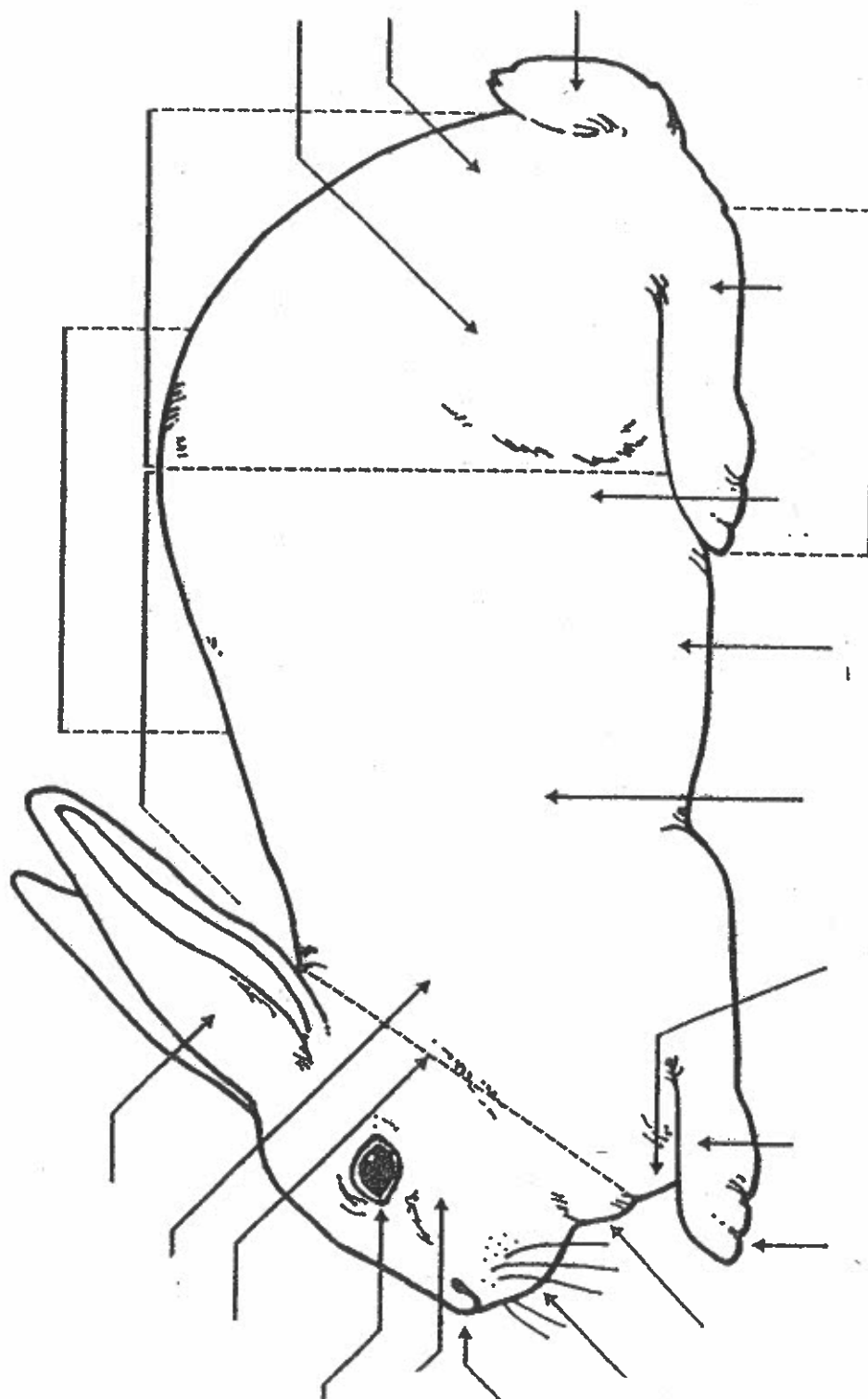
Exploratory Learning: Educational Program

This component adapted from materials found in *Raising Rabbits*!
(© The Ohio State University, 1985 - Ohio State University Extension 4-H Youth Development).
Graphic property of Curriculum Materials Service.

Product distribution through the Curriculum Materials Service

Use this poster in conjunction with Anatomy - Match the names to the correct parts of the rabbit situation/task statement and/or Parts of a Rabbit Identification tags.

Parts of a Rabbit



RABBIT

LEARNING LABORATORY KIT

Exploratory Learning: Educational Program

This component adapted from materials found in *Raising Rabbits I* © The Ohio State University, 1969 - Ohio State University Extension 4-H Youth Development.
Graphic property of Curriculum Materials Service.

Product distribution through the Curriculum Materials Service

Senior

Station 1

Breeds



American Fuzzy Lop



Cinnamon

SENIOR
BREEDS



French Lop



Lilac

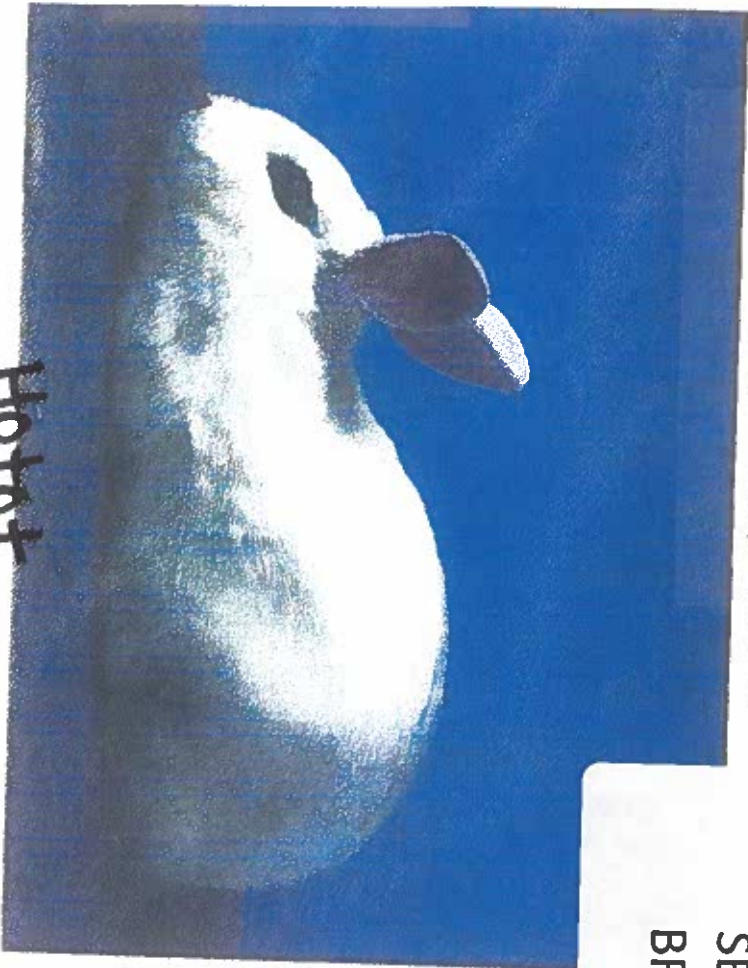


Florida White



Rhinelanders

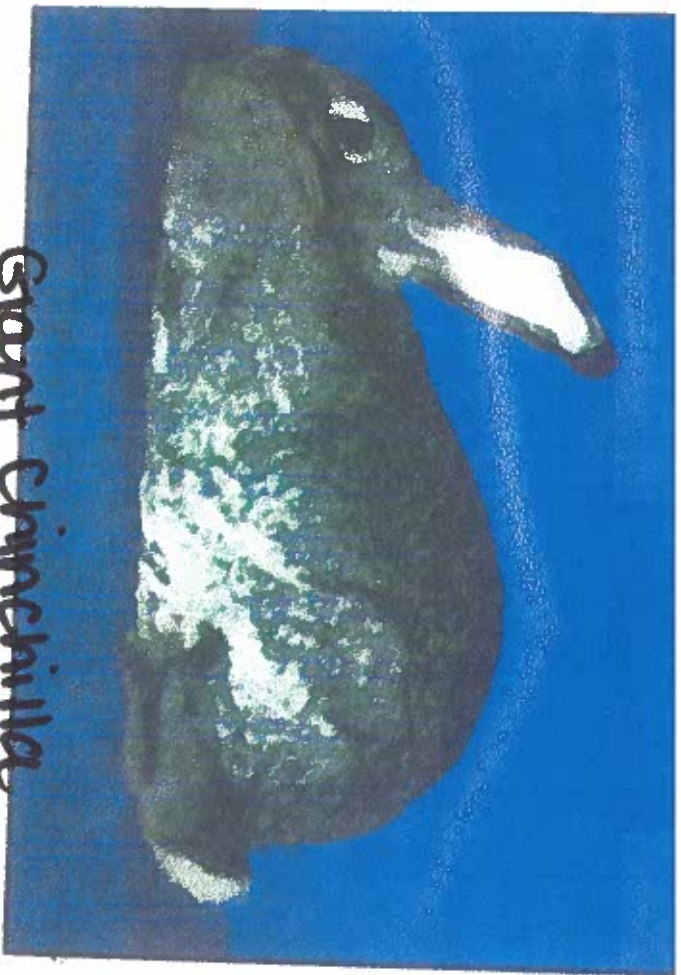
SENIOR
BREEDS



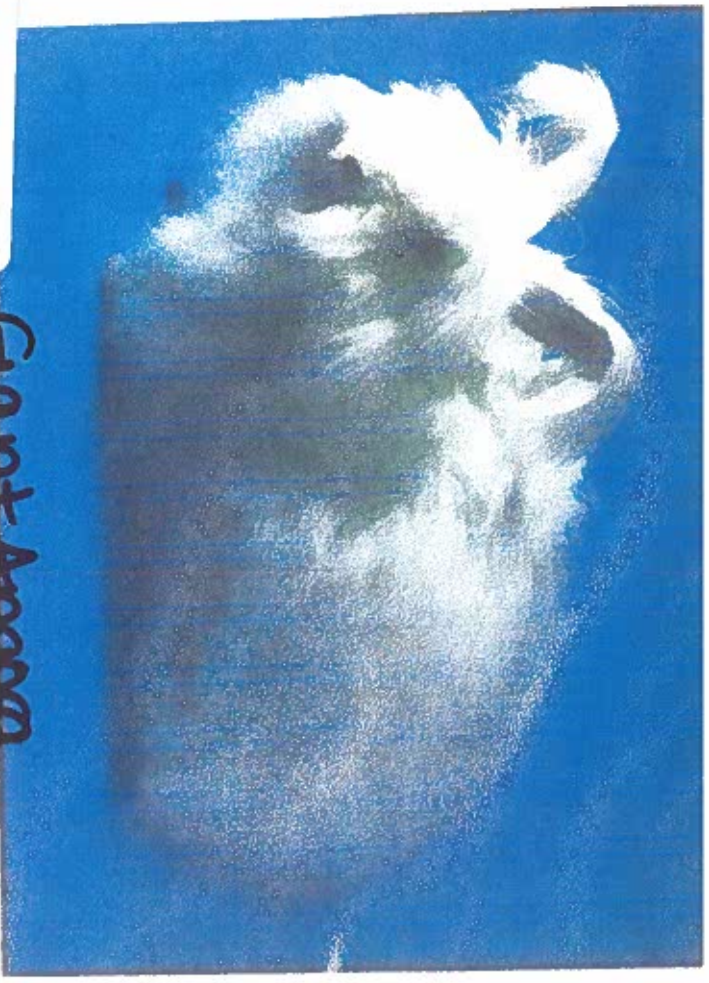
Hotot



Silver



Giant Chinchilla



Giant Angora

SENIOR
BREEDS

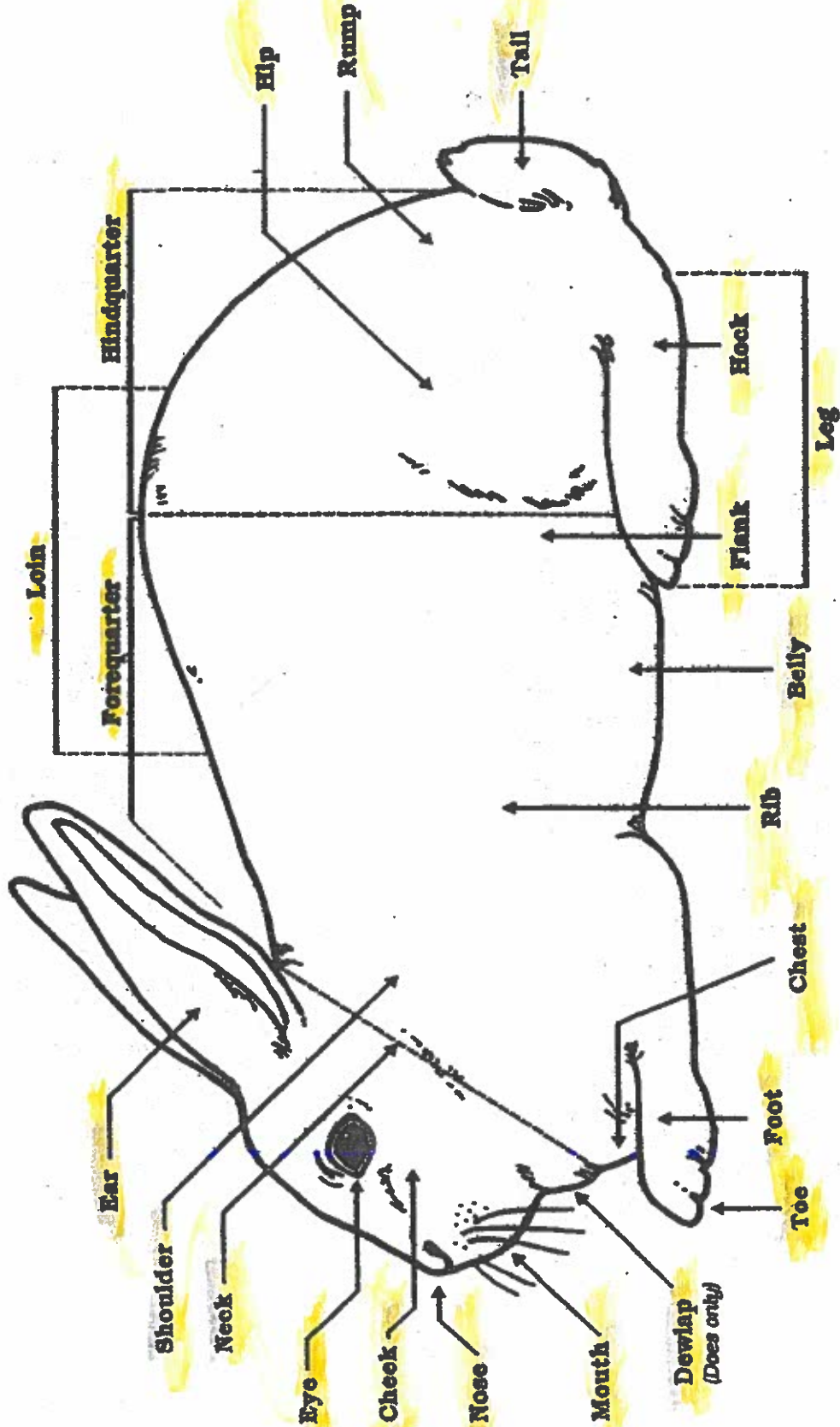
Senior

Station 2

Parts

Use this poster in conjunction with Anatomy - Match the names to the correct parts of the rabbit situation/task statement and/or Parts of a Rabbit Identification tags.

Parts of a Rabbit



RABBIT
LEARNING LABORATORY KIT

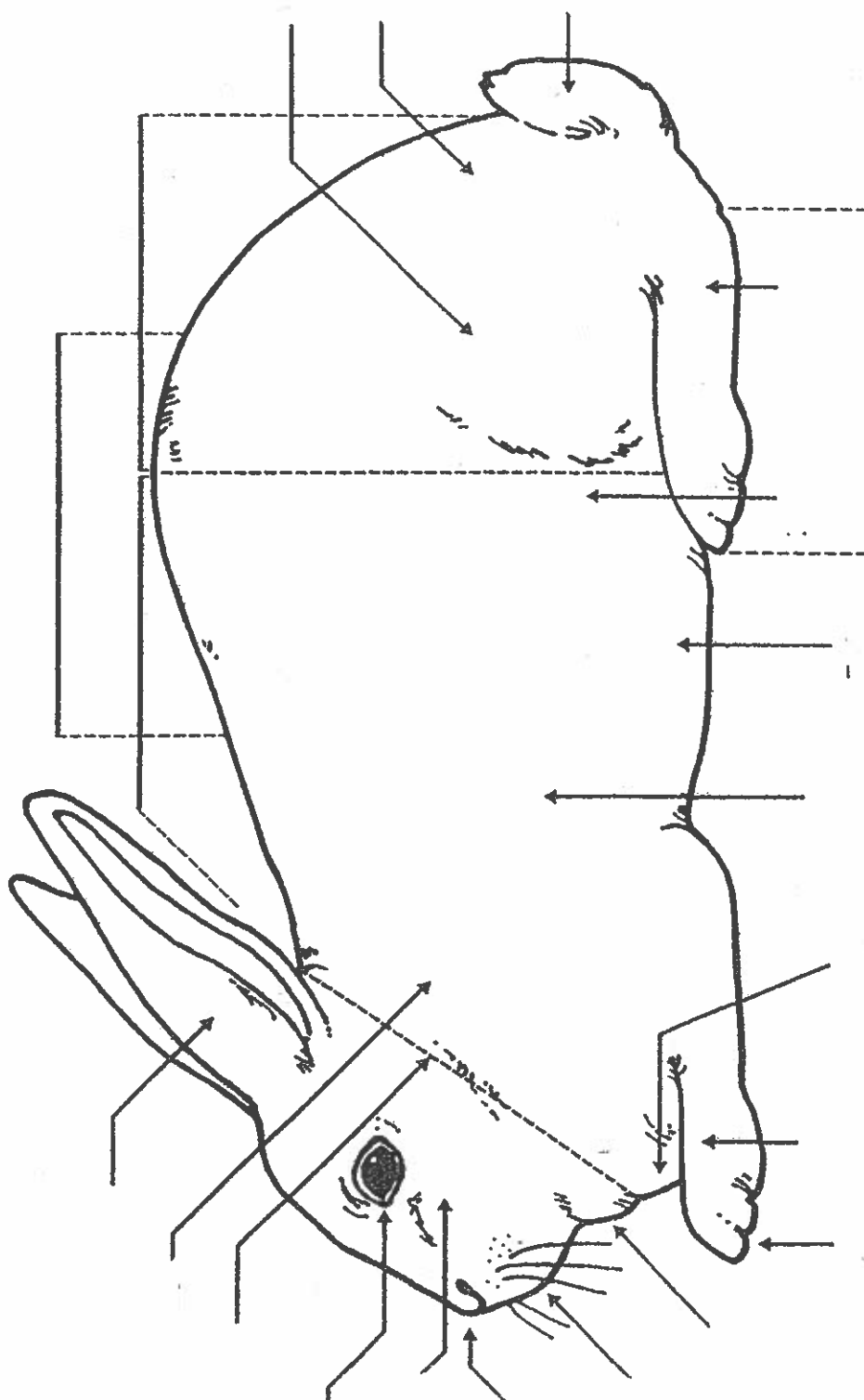
Exploratory Learning: Educational Program

This component adapted from materials found in *Raising Rabbits* © The Ohio State University, 1968 - Ohio State University Extension 4-H Youth Development. Graphic property of Curriculum Materials Service.

Product distribution through the Curriculum Materials Service

Use this poster in conjunction with Anatomy - Match the names to the correct parts of the rabbit situation/task statement and/or Parts of a Rabbit Identification tags.

Parts of a Rabbit



Exploratory Learning: Educational Program

This component adapted from materials found in *Raising Rabbits I*

© The Ohio State University, 1985 - Ohio State University Extension 4-H Youth Development.

Graphic property of Curriculum Materials Service.

Product distribution through the Curriculum Materials Service

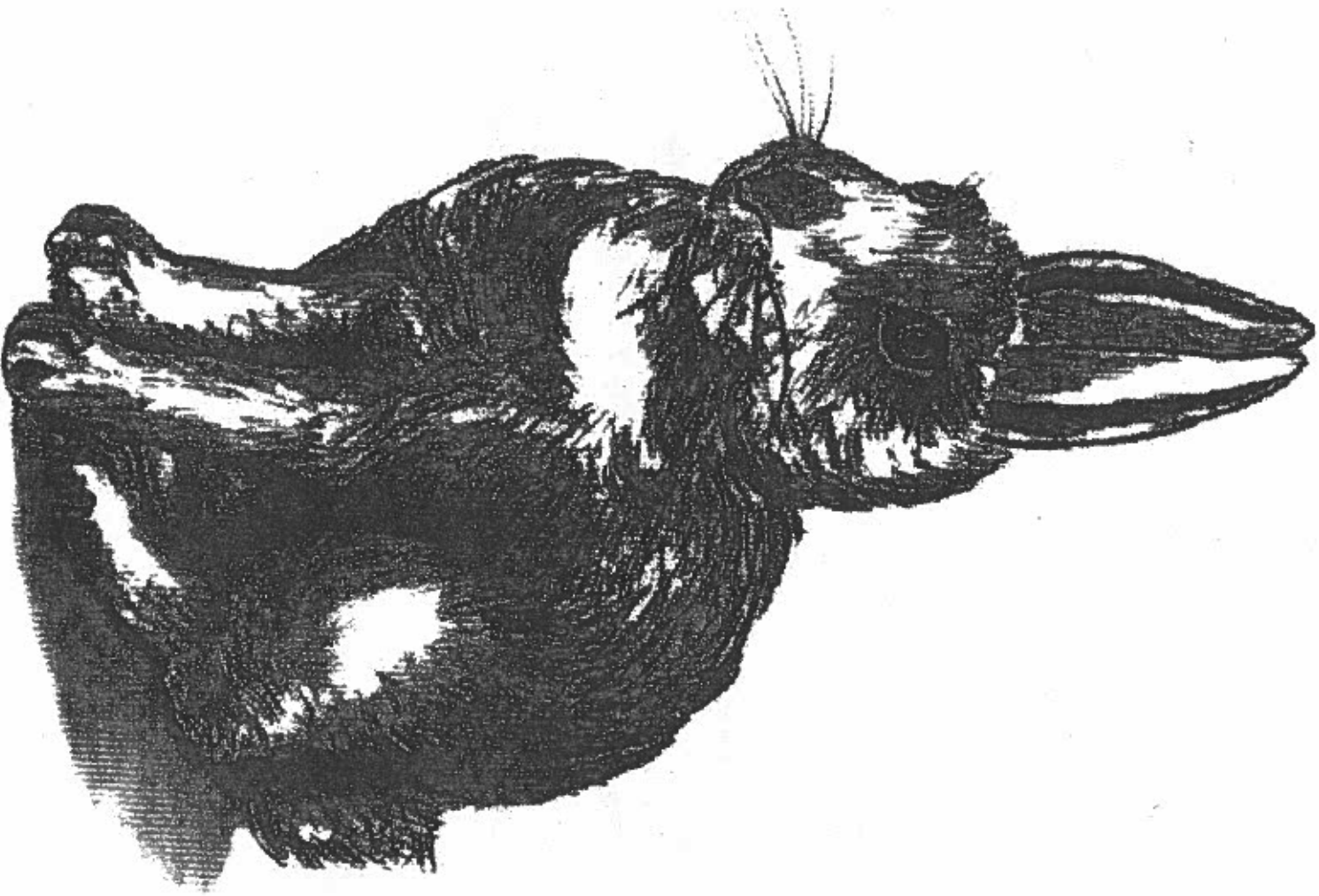
RABBIT
LEARNING LABORATORY KIT

**Junior,
Intermediate,
& Senior**

Station 3

Rabbit Posture

2



STARTLED

Startled

This type of posture is displayed when a rabbit has been surprised. His eyes are wide open with the sclera visible. His ears are up and together. He head is up with an alert look. He sits forward on his toes.

3-7-4-4-7-2



✱

FEARFUL

3



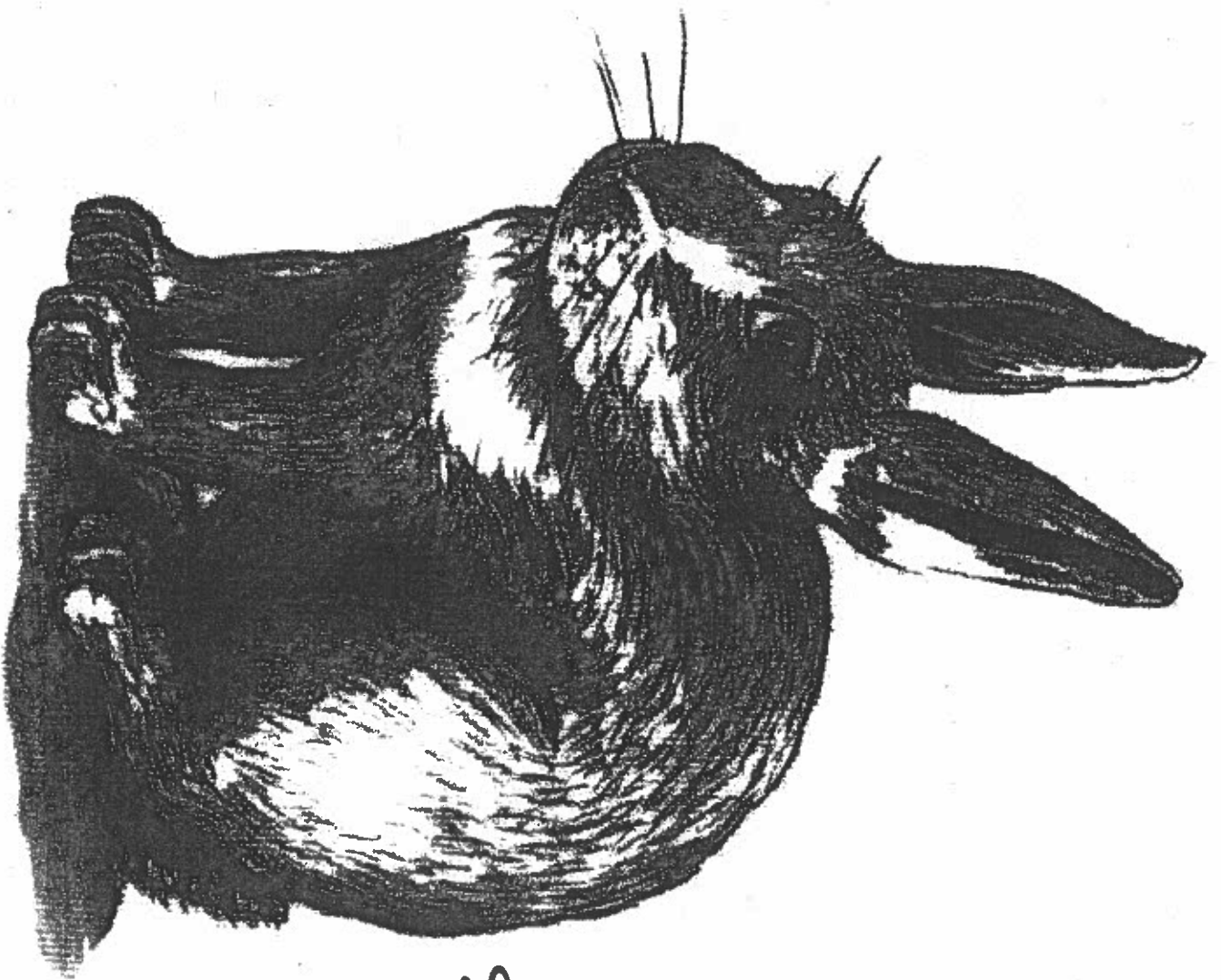
Fearful

This rabbit is very afraid. He may warn others by thumping his hind leg to the ground, making a loud noise. He is pressed as close to the ground as possible, and frozen in place. He breathes rapidly, has tight facial muscles, and bulging eyes.

503.20434



STRESSED



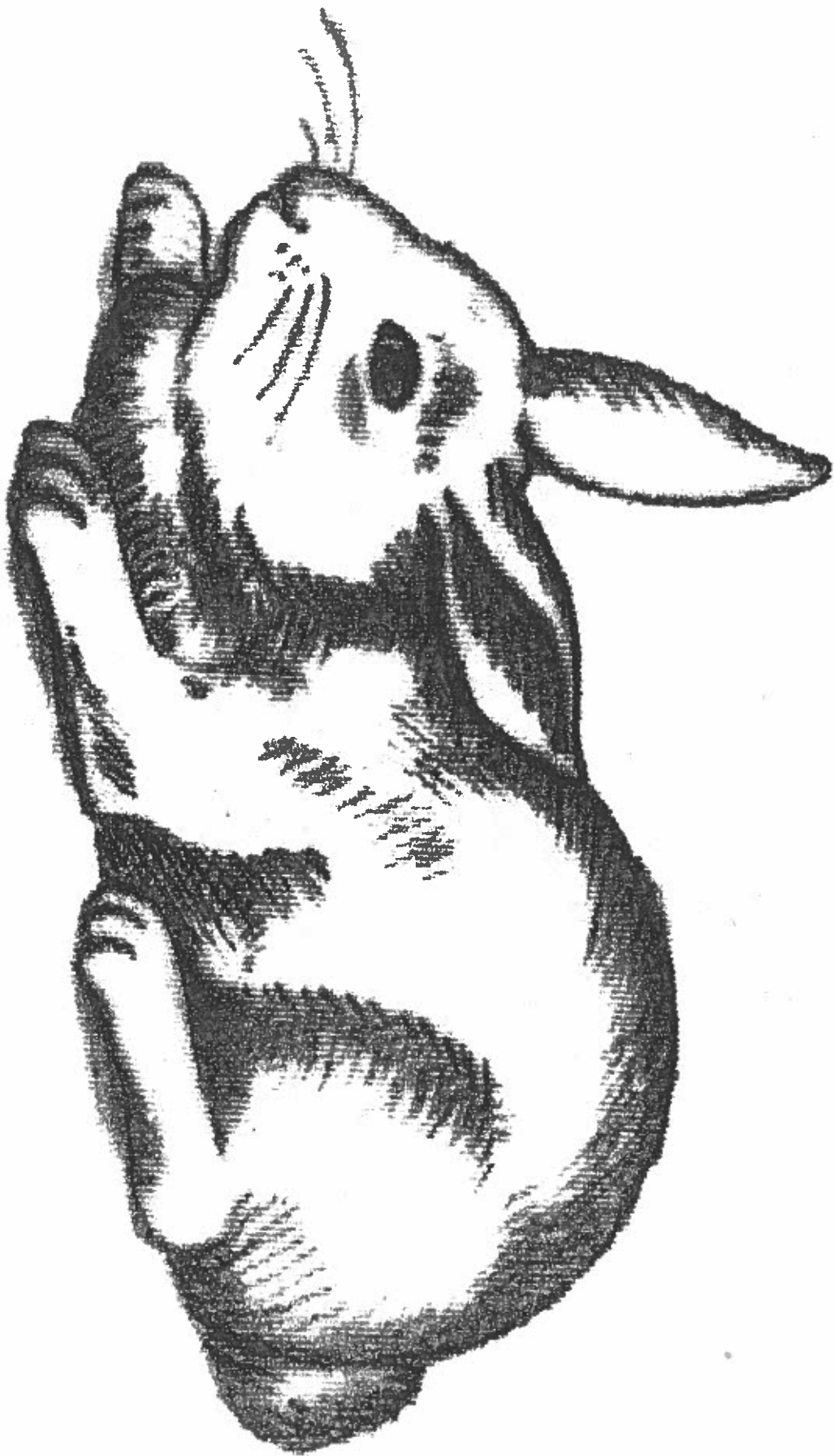
5



Stressed

A rabbit assumes this posture when he is unable to adapt to something in his environment. A rabbit may show more signs of this behavior, or the signs may intensify, as the situation he is in becomes more disturbing. Rabbits displaying this behavior may be afraid, or become aggressive.

43223.8 TC



SUBMISSIVE

5



Submissive

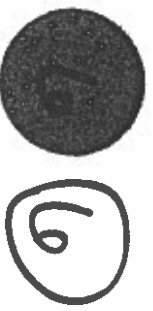
A rabbit displaying this type of posture is deferring to a dominant rabbit or person. She wants to avoid any additional threats or confrontations. Her ears are back or one may be up and one down; and she avoids eye contact. She crouches down close to the ground, appearing as small as possible.

3/12/2018

(2)



AGGRESSIVE



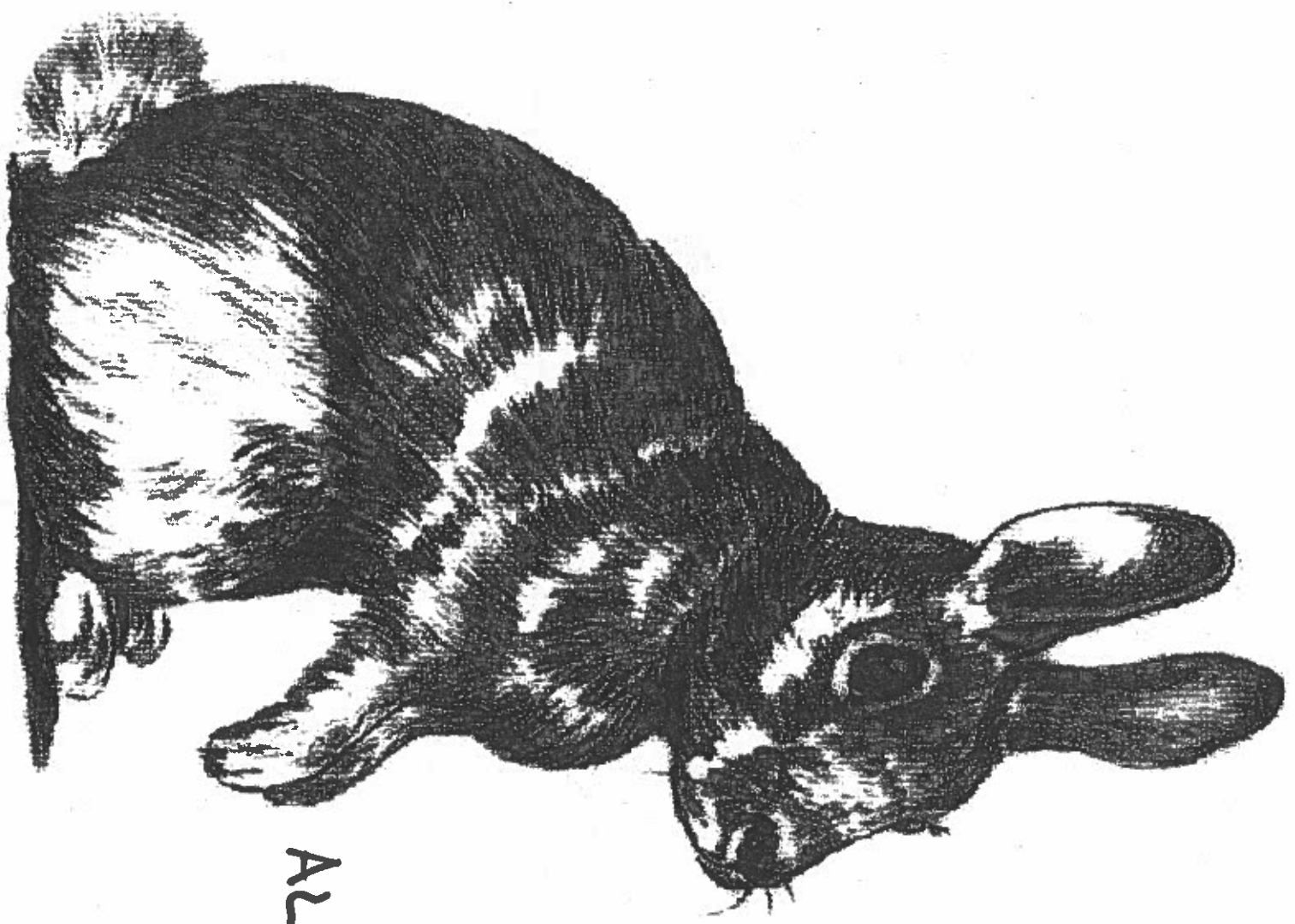
Aggressive

This type of body posture is displayed when a rabbit is communicating confidence and dominance if confronted. He is preparing to face his enemy head on. He may loudly grind teeth, grunt, growl, or hiss, usually followed by a bite.

341822338004



ALERT



7



Alert

This type of posture is displayed by a rabbit that shows interest in her environment. She sits up on all fours or her hind feet, ready to react depending on what happens next.

1983.11.1

①



PLAYFUL

①

①

PLAYFUL

Playful

This is a lively, full-of-fun posture. The rabbit may bounce, jump, leap, and twist. He kicks his hind feet to one side.

Station 4

Rabbit Sanitation

**Juniors,
Intermediates, and
Seniors**

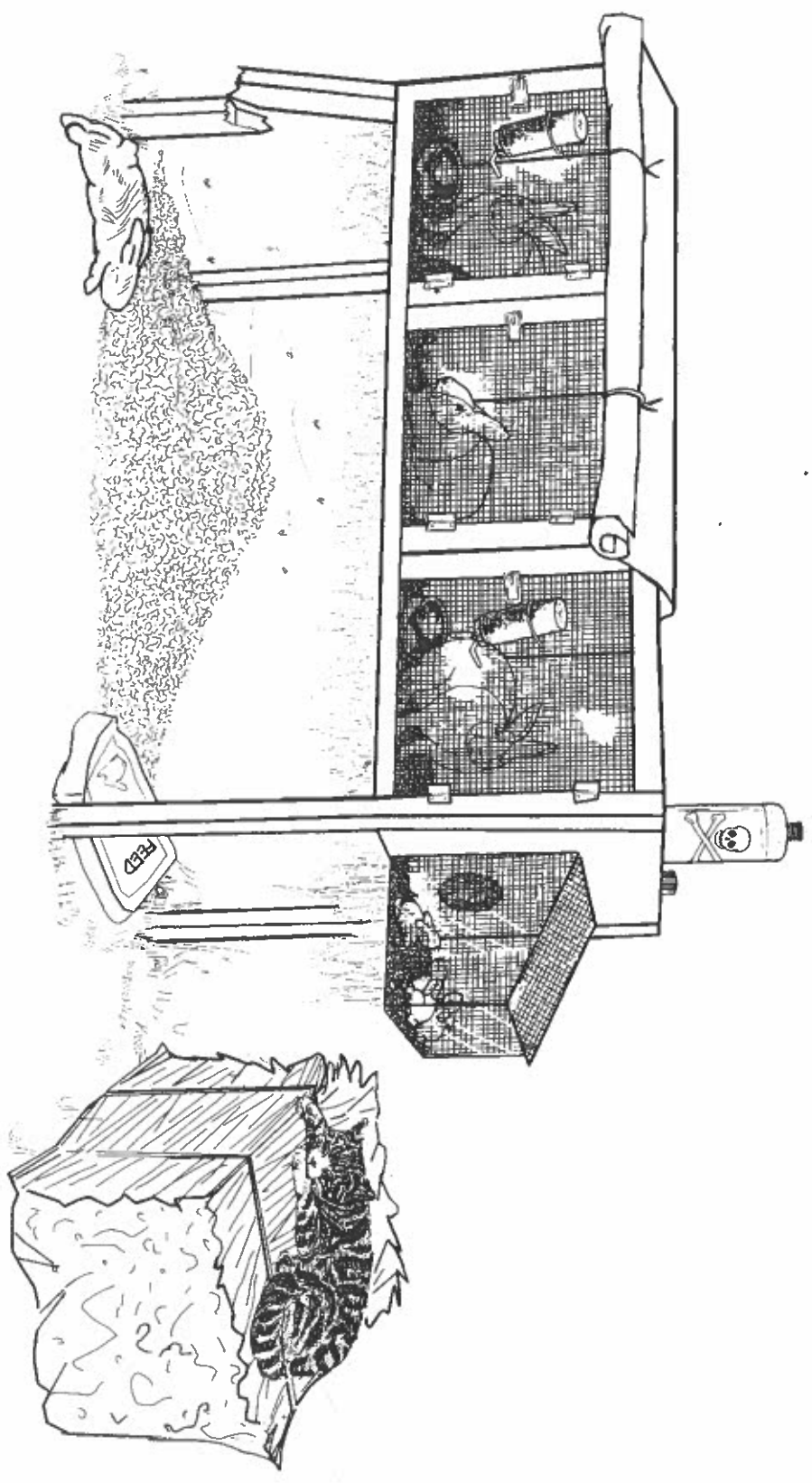
Rabbit Sanitation

List 5 things wrong with this picture.



Name (5) things wrong in this picture:

Rabbitry Sanitation Is Critical



Use this poster in conjunction with Management - Circle the sanitation issues situation/task statement and/or a dry erase marker.



RABBIT

LEARNING LABORATORY KIT

Exploratory Learning: Educational Program

This component developed through the creative skills and abilities of Amy Boye, Graphic Designer, Curriculum Materials Service at The Ohio State University and Donna Maraschak, Program Assistant, 4 H Youth Development, Ohio State University Extension.

Graphic property of Curriculum Materials Service

Station 5

Rabbit Vocabulary

Intermediates & Seniors

Vocabulary

Know these vocabulary words from your Resource Handbook.
Juniors do not have to complete the "Vocabulary" station.

Intermediates

Slipping Coat- Fur that is shedding or molting.

Disqualification- One or more permanent blemishes, defects, or deformities that cause a rabbit to be ineligible for registration or competition.

Balance- An orderly and harmonious arrangement of physical characteristics that provide an overall pleasing shape or conformation.

American Rabbit Breeders Association (ARBA)- The governing body for registering and showing rabbits in the United States.

Kindle-When the doe gives birth to young rabbits. The process of the doe giving birth.

Seniors

Abnormality- Any deviation from the normally accepted condition of the body structure of a rabbit.

Agouti- A hair shaft having three or more bands or rings of color, with a definite break between each color.

Type- Indicates the body conformation of the rabbit or shape or size of a particular part of a rabbit; the general characteristics of a rabbit

Depth- A measurement downward from the topline to the lowest portion of the body. Sometimes used to describe the extension of color down the hair shaft.

Rollback- Fur that gradually returns to its normal position when stroked from the hind-quarters to the shoulders. The fur returns slightly slower than a flyback coat.

Senior Only

Station 6
Tattooing

At this station, you are planning to exhibit your rabbit at the county fair. In order to do so, you must tattoo your rabbit.

Prepare the tattoo pliers to apply a tattoo off "ABC" to your rabbit's ear.

Points will be scored on these items:

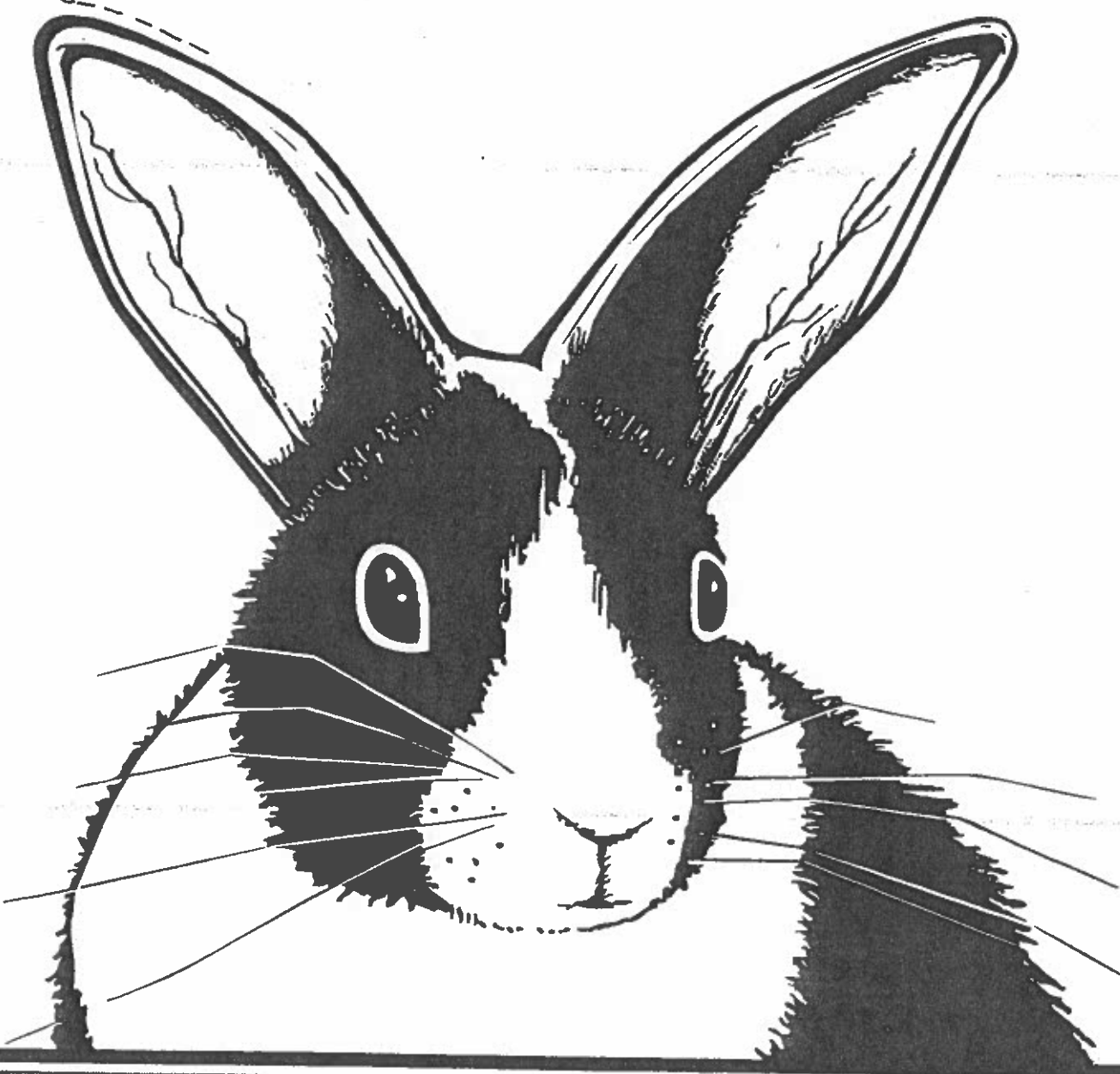
1. Did you tattoo the correct ear?
2. The placement of the tattoo in that ear.
3. The placement is worth two points. There are two areas you must try to miss when you tattoo.
4. The correct "ABC" order of the tattoo.
5. The important first step. You don't have to do this step on your paper rabbit, but you must write it down on your score sheet.

Once you have completed the tattoo, take the letters out of the tattooer and put them away.

Put the tattooer back into the box.

Rabbit Tattooing Template

Directions: Copy this template and cut around the outline of this rabbit and remove completely from its page. Use this template in conjunction with the **Tattoo Set, Rabbit Tattooing Procedures and Techniques** poster, and the **Preparing to Tattoo and Demonstrating Tattooing Techniques** situation task card.



 **RABBIT**
LEARNING LABORATORY KIT

Exploratory Learning: Educational Program
Graphic property of Curriculum Materials Service.

Product distribution through the Curriculum Materials Service.

Station 7
Trip Around the
Fairgrounds
& Turn in Book

All Ages

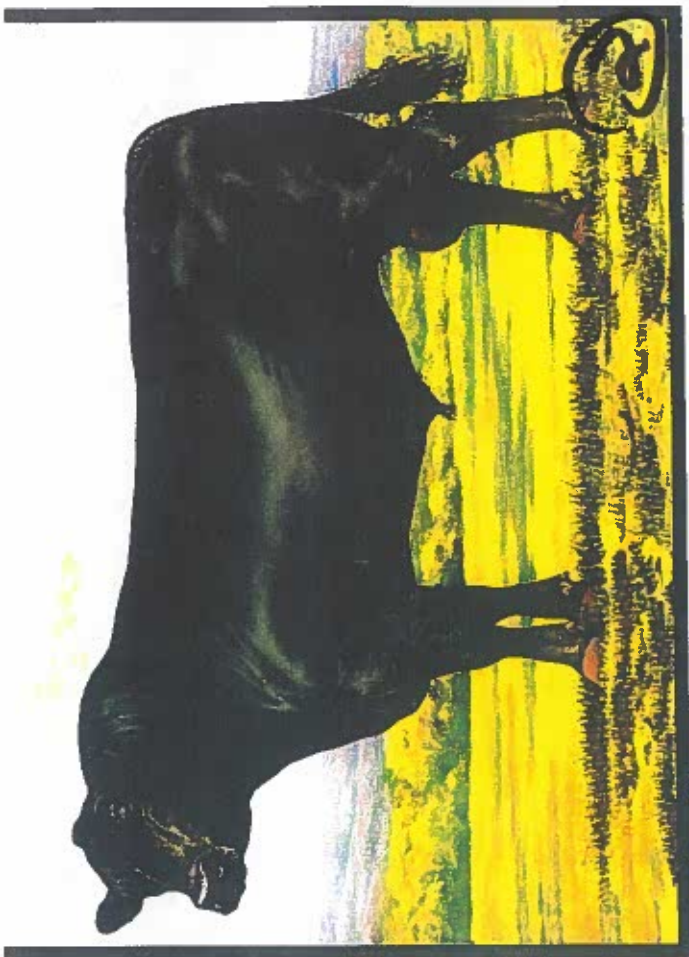
Trip Around the Fairgrounds

In this Skill-A-Thon station, you will be taking an imaginary walk around the Jefferson County Fair. On this walk, you will see many of the animals that you would actually see at the fair.

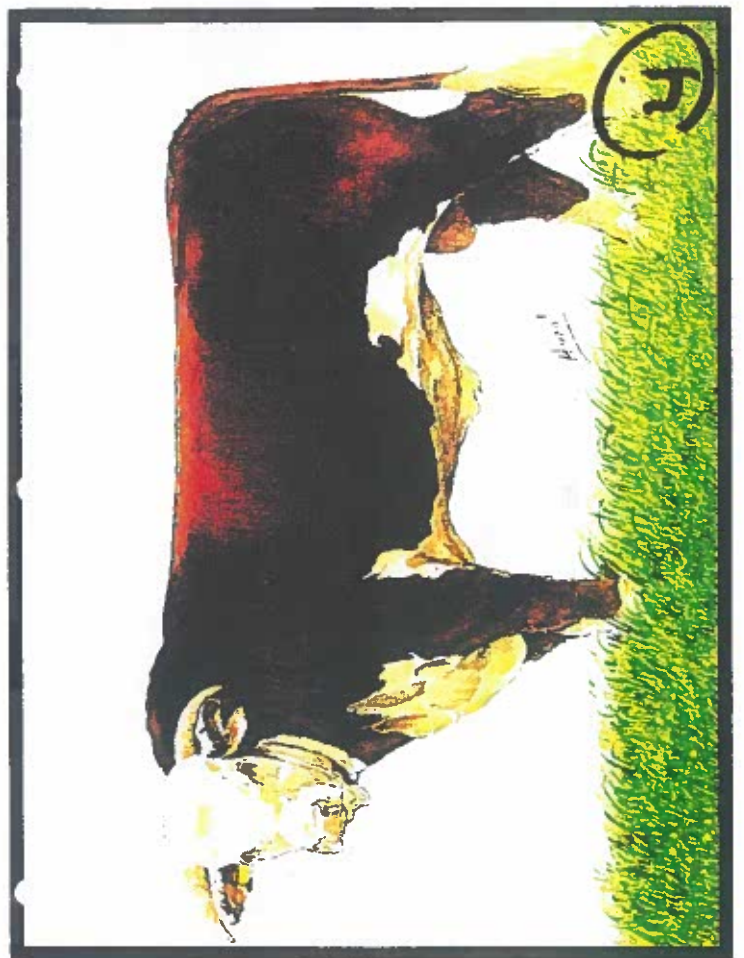
Your job is to identify eight of the animals you see. On your score sheet, you will have a list of 24 blank spaces. Identify the animal by putting the name of its breed on the correct number on the sheet.

You can only identify eight and you won't get any extra credit if you name more.

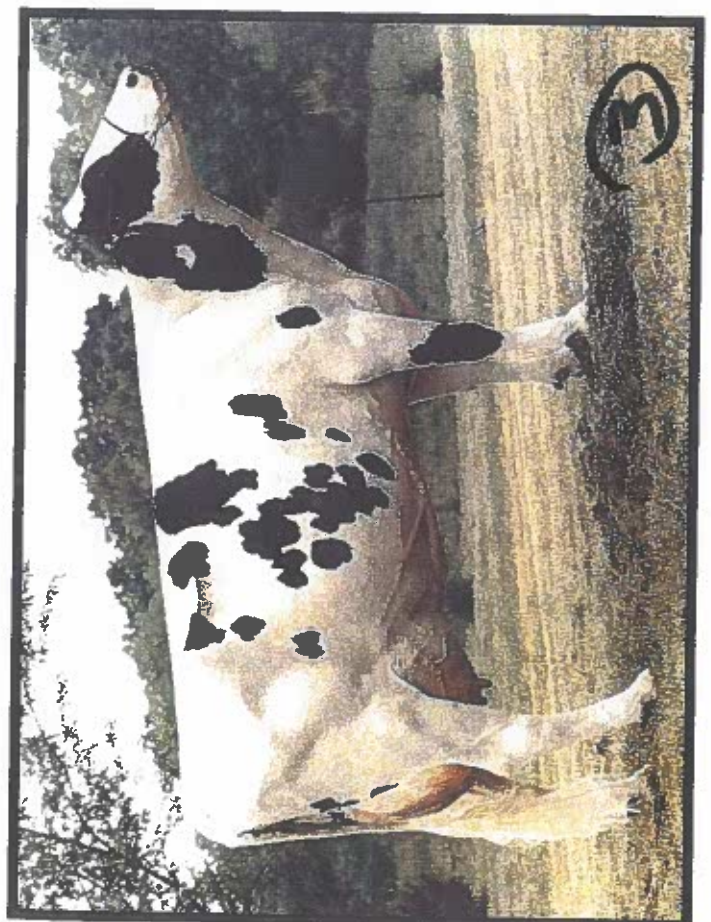
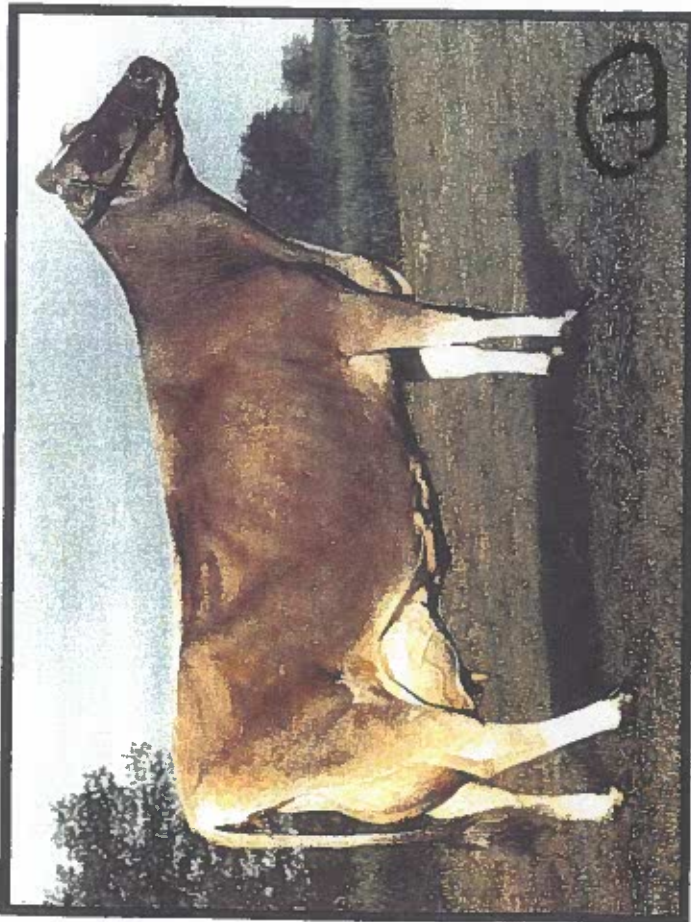
Good luck!



202



194



Holstein

This breed is the most popular of the dairy cows and also the largest. They are black and white, but may be red and white. They are known for producing the most milk of all the dairy breeds.

Hereford

This breed was developed in England and brought to the United States. They have red bodies with white faces.

Jersey

These dairy cows are the smallest cows in size and produce milk that is the highest in fat and protein. They are fawn colored with or without white markings.

Angus

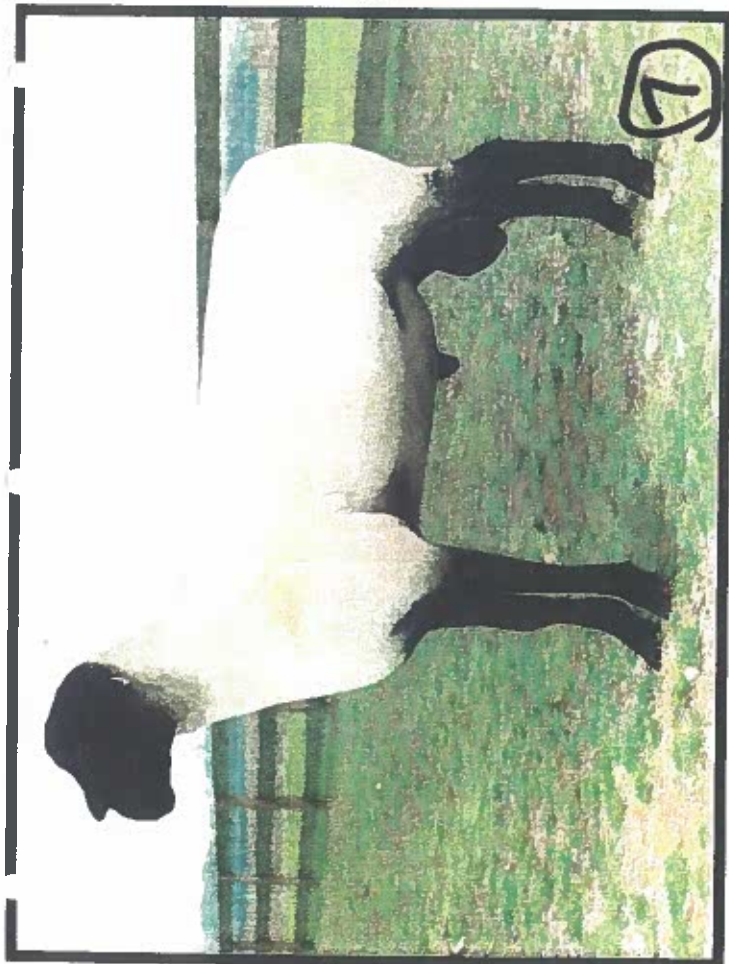
This breed originated in Scotland. They are polled with a black, smooth coat.



249



24



7

Suffolk

This polled breed with black head and legs has the most number of purebred registrations in the U.S.

They grow quickly and are known for their meatiness.

2

Paint

This breed of horse originated in the United States. The name refers to its spotted or two-tone pattern- white with one additional color. They are used as stock, pleasure, race, or show horses.

8

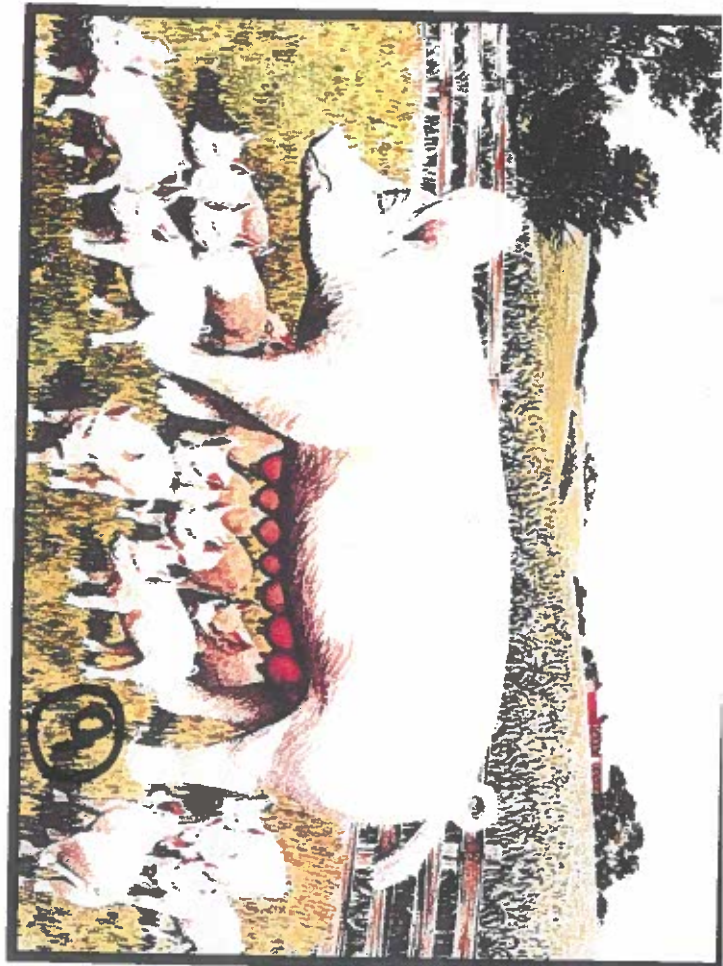
Boar

This breed is known because of their sturdy legs which allow them to move easily through rugged terrain and to withstand a wide range of climatic conditions.

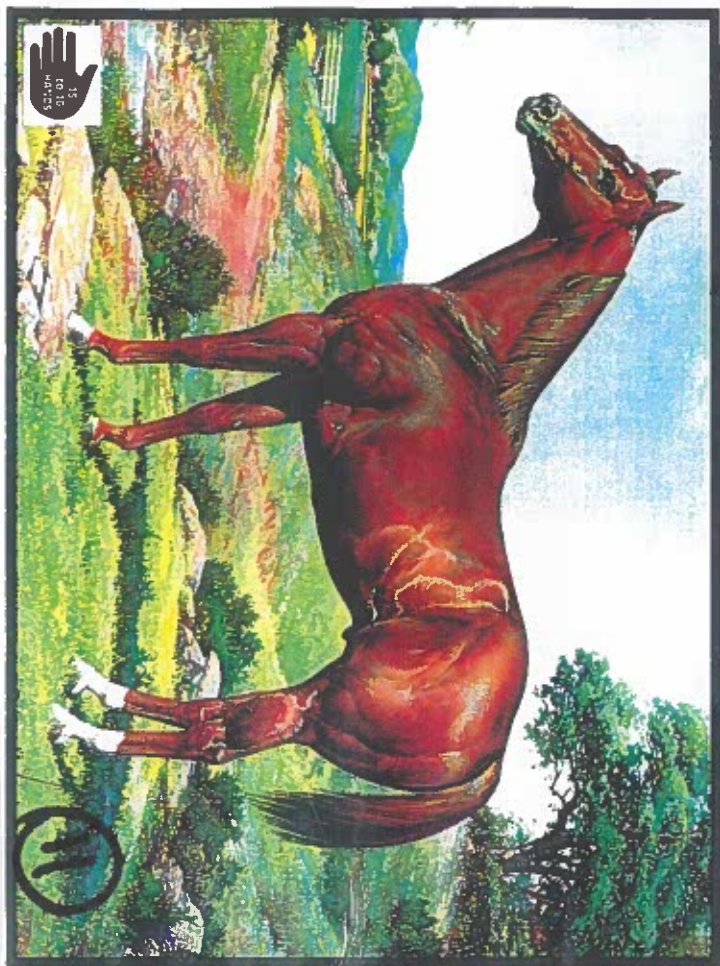
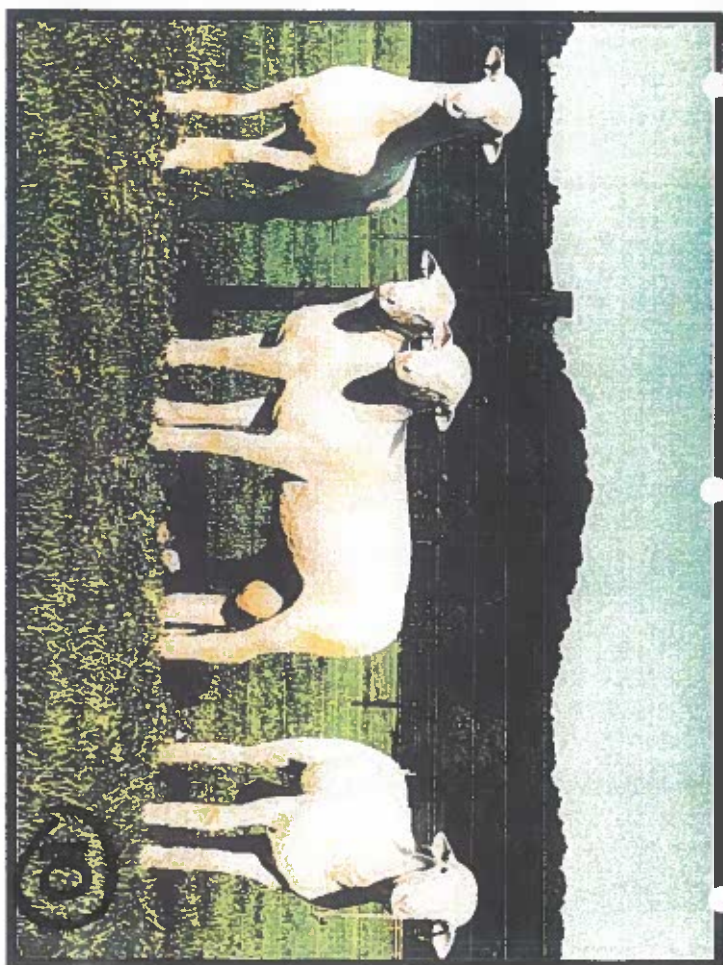
9

Pygmy

This dwarf breed of goat originated in Africa and the Caribbean. They are only 16-22 inches tall. They can be white caramel, caramel, gray agouti, black agouti, and charcoal agouti.



72



11

Quarter-horse

This breed originated in the United States and was named for its quarter-mile racing speed. They can be chestnut, palomino, black, brown, gray, or roan. They are powerfully built and quick on their feet.

12

Yorkshire

These animals have long, large-framed white bodies with erect ears. They produce large litters and are good mothers.

13

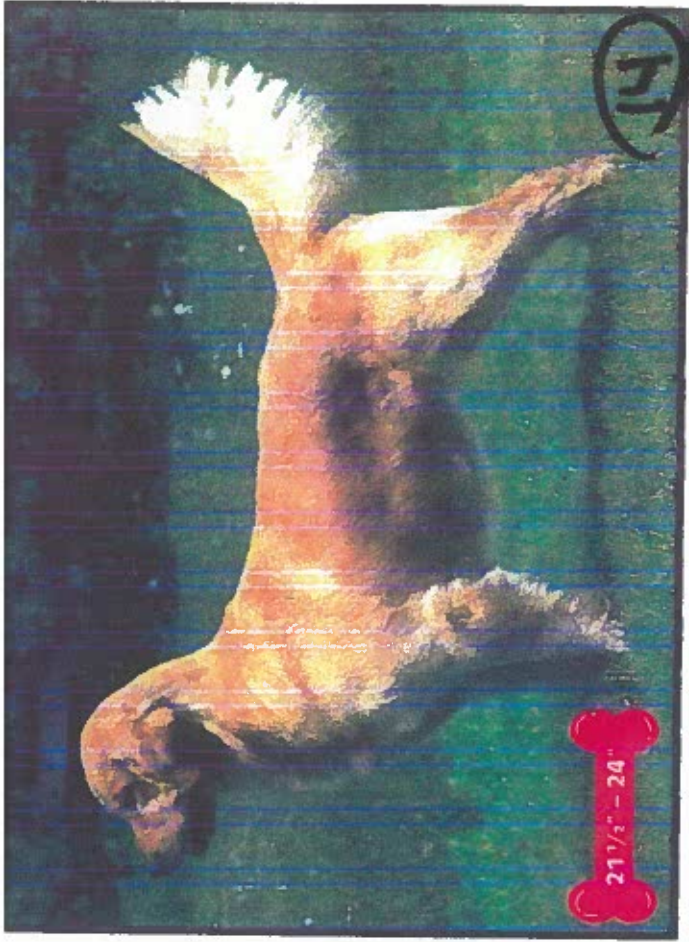
Hampshire

These animals have black bodies with a white belt around the shoulders and both front legs. They have erect ears and heavy muscles.

14

Dorset

This breed of sheep can be polled, scurred, or horned and are known for producing more than one lamb crop per year.



12

Cornish

This breed of chicken originated in England. Comb, wattles, and earlobes are bright red. Beak is short, stout and curved. Skin is yellow and plumage is white

13

Border Collie

This herding breed is black and white with or without tan points. They are 18 to 22 inches tall at the withers. They have an athletic build. They are intelligent, alert, and affectionate.

14

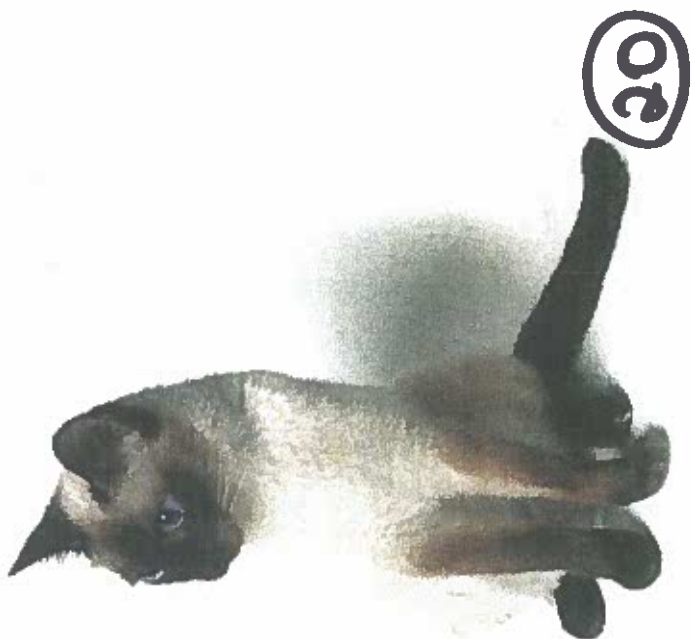
New Hampshire

This breed of chicken shows off its comb, wattles, and earlobes which are all bright red. They are competitive and can be aggressive. Skin is yellow and plumage is chestnut red.

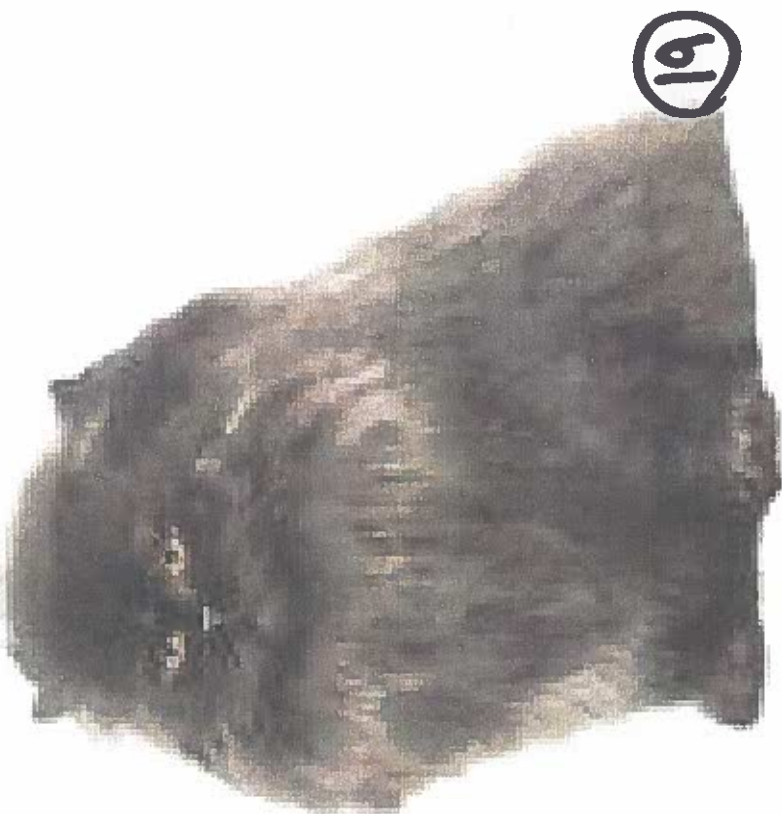
15

Golden Retriever

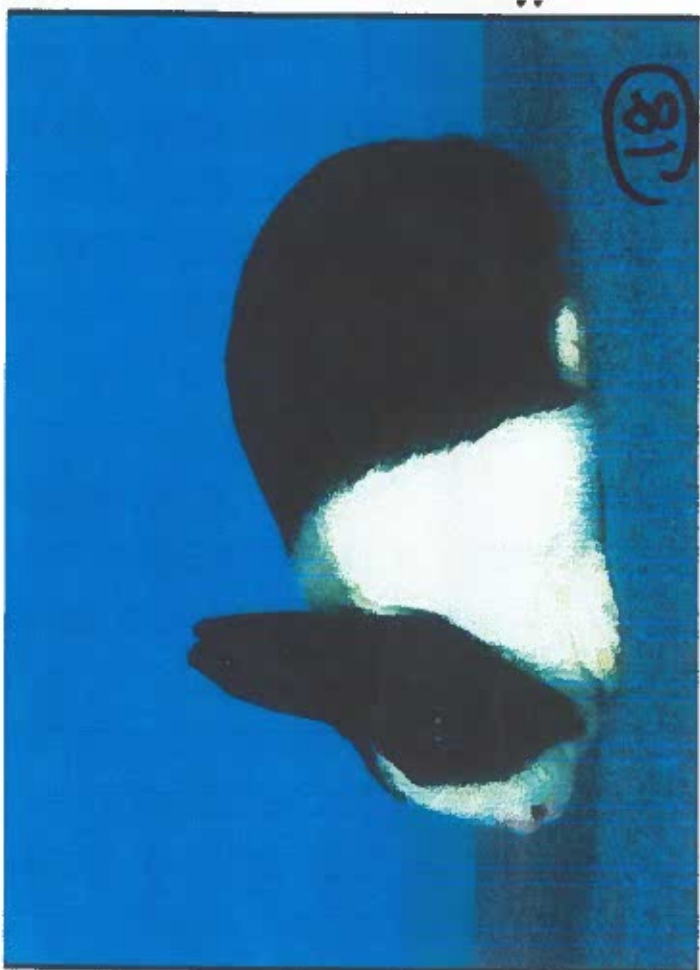
This sporting breed originated in England. The coat is rich, lustrous gold of various shades. They are gentle and loyal and serve as great pets. They are often used as guide dogs for the blind.



20



19



18



17

18

Persian

The Persian is a long-haired cat characterized by its round face and shortened muzzle. It has been the most popular breed of cat in the United States for many years.

50

Siamese

This is one of the most recognized of all the Oriental cats and the most popular of all short-haired cats. They have long slender bodies, a triangular face and are known for their blue eyes.

14

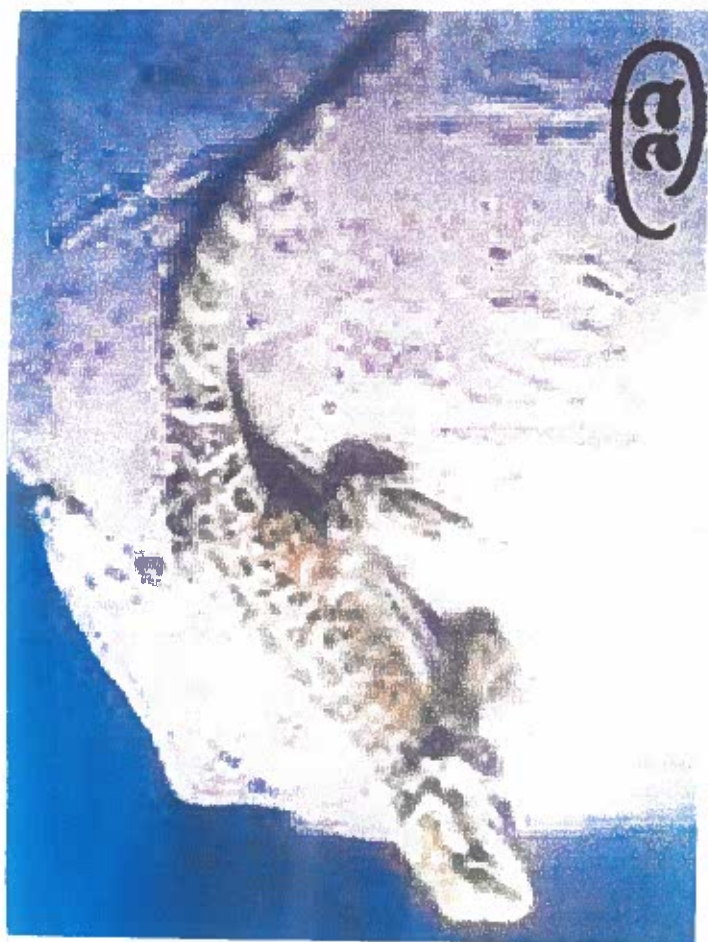
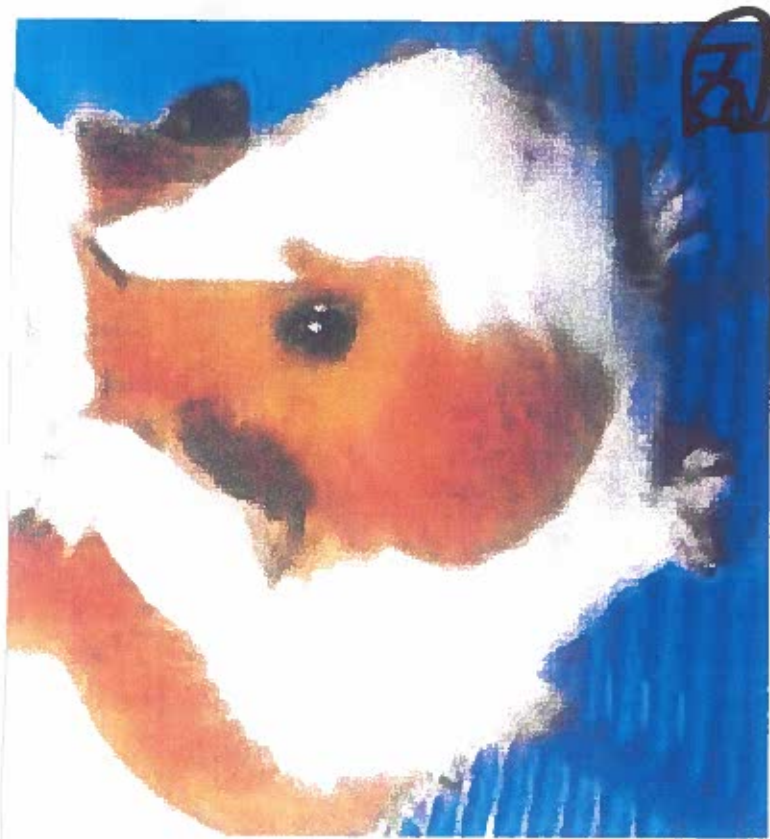
Holland Lop

This small breed has a massive head with long ears and a flat nose. They are small with a mature weight of only 3 to 4 pounds.

18

Dutch

This breed is usually black and white with a white blaze going from the ears to the nose. Mature weight is 3 ½ to 5 ½ pounds. They are exhibition use.



Chinchilla

Chinchilla are about the same size as a small to medium-sized rabbit. They can live 10-15 years. They are not very cuddly but they will jump on you if in the area you are in. They are nocturnal- up all night and sleep all day.

Guinea Pig

Guinea pigs are also called cavyes. They are rodents, not pigs. They are popular as household pets and are very easy to care for. Guinea pigs may wheek (whistle), purr, whine, squeal, chirp or chatter. They are considered fun as pets.

Garter Snake

The garter snake is one of our most common snakes. They can grow up to four feet long. Their color patterns vary, but they almost always have three yellow stripes and a checkerboard pattern between the stripes. They are harmless to humans.

Bearded Dragon

These are great lizard pets. They don't get too large, eat a wide variety of foods, are active during the day, and are gentle pets. They are inexpensive and readily available.

